

**SHIDO**<sup>®</sup>  
MOTORCYCLE  
BATTERIES

**nitro**<sup>®</sup>  
A BATTERY FULL OF ENERGY



# Motorcycle Batteries 2007-2008

Specifications

Data

Applications

And much more...

## SHIDO

- Absolutely highest quality standard
- Produced following JIS (Japan Industrial Standards)
- Manufactured by Japan's biggest battery manufacturer
- Very extensive range: more than 90 refs in stock
- Outstanding Value
- Massive volumes in stock
- Less than 0,5% guarantees
- Extensive support: catalogues, marketing, application lists, technical service
- State of the art battery technology
- 1 Year Guarantee



## YUASA

- Several items in the SHIDO program are supplied under original YUASA brand and packaging. For details: see the official Price List



## NITRO

- Great Value
- Private label with DC-AFAM service
- Complete range including all most recent refs
- High quality "Sealed Activated" range
- Fast stock rotation thanks to big sales volume
- 1 Year Guarantee

# Table of contents

Battery Specifications	Page
Production, Testing & Top Charging facilities	2-3
Conventional	4-5
High Cranking	6-7
Super MF	8-9
Super Sealed Activated	10-11
Battery terminals	12
Battery Cross reference Chart & Designation	13
First Activation	14

Motorcycle & Scooter Battery Applications	
Honda	15-19
Kawasaki	19-21
Suzuki	22-24
Yamaha	24-27

All other	
Aprilia	27-28
Benelli	28
Betamotor	28
Bimota	28-29
BMW	29
Buell	29
BSA	29
Cagiva	29-30
Cannondale	30
Daelim	30
Derbi	30
Ducati	30-31
Fantic	31
Gas-Gas	31
Garelli	31
Gilera	31
Harley-Davidson	31-32
Husaberg	32
Husqvarna	32
Hyosung	32
Indian	32
Italjet	32
KTM	32
Kymco	33
Laverda	33
Maico	33
Malagutti	33
MBK	33
Moto Guzzi	33
MUZ / MZ	33-34
MV Agusta	34

Norton	34
Panda Motor Sports	34
Peugeot	34
PGO	34
Piaggio	34-35
Polaris	35
Puch	35
Royal Enfield	35
Rieju	35
Scorpa	35
TM	35
Triumph	35
Voxan	35

Applications - Quads / ATV / Utility Vehicle	
Aeon	36
Arctic Cat	36
Barossa	36
Bombardier	36
Cannondale	36
Derby	36
E-Ton	36
Honda	36
Husaberg	36
Kawasaki	36-37
Kymco	37
Panda Motor Sports	37
Polaris	33-34
Suzuki	37
Yamaha	38

Applications - Personal watercraft	
Arctic Cat	39
Bombardier	39
Honda - Jet Ski	39
Kawasaki - Jet Ski	39
Polaris	39
Ultranautics	39
Wet Jet	39
Yamaha	39

Applications - Snowmobile	
Arctic Cat	40
Bombardier / Ski-Doo	40
Kawasaki	40
Polaris	40
Yamaha	40

# Production (Far East)



Nitro Assembling Line



NITRO Grid Casting Line



NITRO Charging Control Room



SHIDO Assembling Line

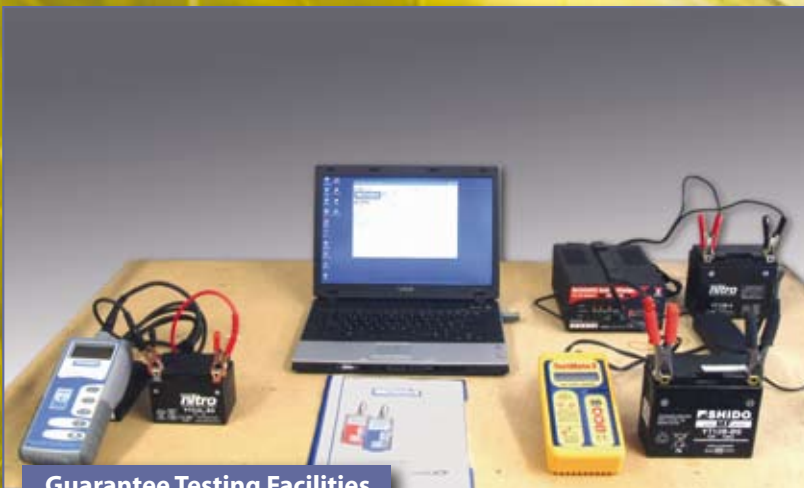


SHIDO Capacity Testing

# Testing and Top Charging (Belgium)



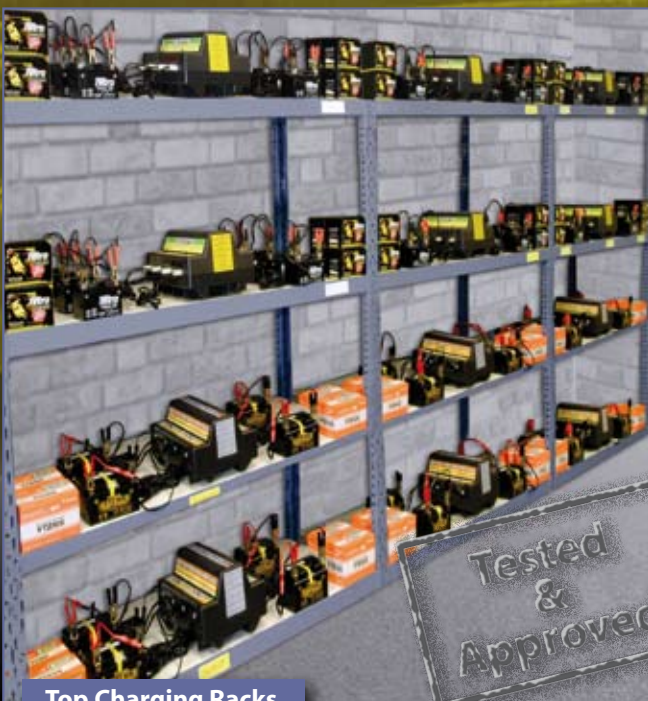
Quality Comparison Test



Guarantee Testing Facilities



Seleicon AH tester



Top Charging Racks

Test Info	
<b>Test Info</b>	
Date	16 jun 2005
Time	10:55
<b>Test Conditions</b>	
Battery Location	Out of Vehicle
Surface Charge Detected	No
<b>Test Results</b>	
Battery Rating	100 CCA
Battery Technology	Gel
Cold Cranking Amps	113 CCA
Battery Temperature	21 °C
Battery Standard	DIN
State of Charge	12,45 V
Test Result	Good Battery

Tested & Approved

# Conventional



- Highest Engineering Standards
- Highest Quality Materials
- Highest Quality Construction
- Widest Model Range
- Excellent Warranty Coverage



## SPECIFICATIONS

The CCA(Cold Cranking Amps) rating is for reference only.The CCA rating is theoretically calculated value. Actual performance may vary due to test conditions.

## 12-VOLT

Type	Capacity Ah/10HR	*CCA (A)	Max.Dimensions			Weight with Acid (kg)	Acid Volume (liter)	Regular Charge Current (amp.)	Assembly Figure	Similar Spec. Most Recommended
			(mm)							
			L	W	H					
12N5-3B	5	39	121	61	131	2.0	0.4	0.5		YB5L-B
12N5-4B	5	39	121	61	131	2.0	0.4	0.5		-
12N5.5-3B	5.5	60	138	61	131	2.5	0.4	0.6		-
12N5.5-4A	5.5	60	138	61	131	2.5	0.4	0.6		-
12N5.5-4B	5.5	60	138	61	131	2.5	0.4	0.6		-
12N5.5A-3B	5.5	58	104	91	115	2.4	0.5	0.6		-
12N7-3B	7	47	137	76	135	3.0	0.5	0.7		YB7L-B
12N7-4A	7	47	137	76	135	3.0	0.5	0.7		YB7-A
12N7-4B	7	47	137	76	135	3.0	0.5	0.7		-
12N7B-3A	7	47	151	61	131	2.9	0.5	0.7		-
12N7D-3B	7	74	134	76	150	2.9	0.6	0.7		-
12N9-3A	9	58	138	77	141	3.3	0.6	0.9		-
12N9-3B	9	58	138	77	141	3.2	0.6	0.9		YB9L-B
12N9-4B-1	9	58	138	77	141	3.2	0.6	0.9		YB9-B
12N10-3A	10	103	136	91	146	3.9	0.8	1.0		-
12N10-3A-1	10	103	136	91	146	3.9	0.8	1.0		-
12N10-3A-2	10	103	136	91	146	3.9	0.8	1.0		YB10L-A2
12N10-3B	10	103	136	91	146	3.9	0.8	1.0		YB10L-B
12N11-3A-1	11	128	136	91	156	3.6	0.8	1.1		-
12N11-3B	11	128	136	91	156	3.6	0.8	1.1		-
12N12-3B	12	120	202	76	134	4.4	0.8	1.2		-
12N12A-4A-1	12	113	136	82	162	3.7	0.7	1.2		YB12A-A
12N14-3A	14	128	136	91	168	4.5	0.8	1.4		YB14L-A2
12N18-3	18	190	206	91	164	6.2	1.2	1.8		-
12N24-3A	24	200	186	126	177	7.9	1.8	2.4		-

### DIN Type Motorcycle Battery for European Vehicles

51913	19(20HR)	100	186	82	171	5.6	1.0	1.9		-
51814	18(20HR)	100	186	82	171	5.6	1.0	1.9		-
52515	25(20HR)	130	186	130	171	8.4	1.8	2.5		-
53030	30(20HR)	180	186	130	171	9.4	1.6	3.0		-



**6-VOLT**

Type	Capacity Ah/10HR	Max.Dimensions			Weight with Acid (kg)	Acid Volume (liter)	Regular Charge Current (amp.)	Assembly Figure
		(mm)						
		L	W	H				
6N2-2A	2	70	47	96	0.5	0.1	0.2	
6N2-2A-1	2	70	47	96	0.5	0.1	0.2	
6N2-2A-3	2	70	47	96	0.5	0.1	0.2	
6N2-2A-4	2	70	47	96	0.5	0.1	0.2	
6N2-2A-8	2	70	47	96	0.5	0.1	0.2	
6N2-2D	2	70	47	103	0.6	0.1	0.2	
6N2A-2C	2	70	47	106	0.5	0.1	0.2	
6N2A-2C-3	2	70	47	106	0.5	0.1	0.2	
6N2A-2C-4	2	70	47	106	0.5	0.1	0.2	
6N4-2A	4	71	71	96	0.8	0.2	0.4	
6N4-2A-3	4	71	71	96	0.8	0.2	0.4	
6N4-2A-4	4	71	71	96	0.8	0.2	0.4	
6N4-2A-5	4	71	71	96	0.8	0.2	0.4	
6N4-2A-6	4	71	71	96	0.8	0.2	0.4	
6N4-2A-7	4	71	71	96	0.8	0.2	0.4	
6N4-2A-8	4	71	71	96	0.8	0.2	0.4	
6N4-2A-12	4	71	71	96	0.8	0.2	0.4	
6N4A-4D	4	57	61	131	1.0	0.2	0.4	
6N4B-2A	4	102	48	96	1.0	0.2	0.4	
6N4B-2A-3	4	102	48	96	1.0	0.2	0.4	
6N4B-2A-4	4	102	48	96	1.0	0.2	0.4	
6N4B-2A-5	4	102	48	96	1.0	0.2	0.4	
6N4C-1B	4	71	71	105	0.8	0.2	0.4	
6N5.5-1D	5.5	99	70	100	1.1	0.3	0.6	
6N5.5-1D-1	5.5	99	70	100	1.1	0.3	0.6	
6N6-1B	6	99	57	111	1.2	0.3	0.6	
6N6-1B-1	6	99	57	111	1.2	0.3	0.6	
6N6-3B	6	99	57	111	1.3	0.3	0.6	
6N6-3B-1	6	99	57	111	1.3	0.3	0.6	
6N6-1D	6	99	57	111	1.2	0.3	0.6	
6N6-1D-2	6	99	57	111	1.2	0.3	0.6	
B39-6	7	126	48	126	1.7	0.3	0.7	
B49-6	8	91	83	161	2.1	0.5	0.8	
6N11-2D	11	150	70	101	2.0	0.4	1.1	
6N11A-1B	11	122	62	131	2.1	0.4	1.1	
6N11A-3A	11	122	62	131	2.1	0.4	1.1	
6N11A-4	11	122	62	131	2.1	0.4	1.1	
6N12-4A	12	170	55	139	2.6	0.5	1.2	
B54-6	12	156	57	116	2.3	0.5	1.2	
6N12A-2D	12	156	57	118	2.3	0.45	1.2	
B38-6A	13	119	83	161	2.9	0.62	1.3	

# High Cranking

**PRO-ACTIVE  
FORMULA**

## SHIDO Pro-active Formula

When a battery has been stored, too long before use, the plates change the chemical form to crystallized lead sulfate. This phenomenon is called sulfation (SO<sub>4</sub>).

Once this chemical reaction has taken place, it's very difficult to charge the battery to full capacity.

In order to reduce this problem, we add a special chemical product to the High Cranking batteries. Due to this **Pro-active Formula**, the High Cranking Batteries can be charged to full capacity from the moment you use them.

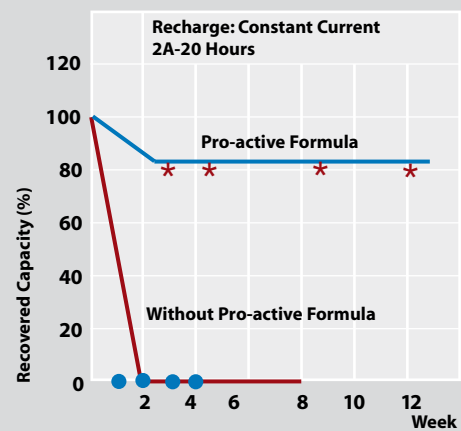
We developed special lead plates, in combination with fibre glass separators. Thanks to a lower electric resistance, this battery offers **30% more starting power** compared to standard batteries.

**SHIDO**

**HIGH CRANKING**

**nitro**  
A BATTERY FULL OF ENERGY

### Recovery By Recharge



## SPECIFICATIONS

\*The CCA (Cold Cranking Amps) rating is for reference only. The CCA rating is theoretically calculated value. Actual performance may vary due to test conditions.

Type	Capacity Ah/10HR	*CCA (A)	Max. Dimensions			Weight with Acid (kg)	Acid Volume (liter)	Regular Charge Current (amp.)	Assembly Figure
			(mm)						
			L	W	H				
<b>(6-VOLT)</b>									
6YB8L-B	8	-	121	71	96	1.6	0.31	0.8	
<b>(12-VOLT)</b>									
YB2.5L-C	2.5	19	81	71	106	1.0	0.24	0.3	
YB2.5L-C-1	2.5	19	81	71	106	1.0	0.24	0.3	
YB2.5L-C-2	2.5	19	81	71	106	1.0	0.24	0.3	
YB3L-A	3	32	99	57	111	1.3	0.24	0.3	
YB3L-B	3	32	99	57	111	1.3	0.24	0.3	
YB4L-A	4	56	121	71	93	1.5	0.3	0.4	
YB4L-B	4	56	121	71	93	1.5	0.3	0.4	
YB5L-B	5	65	121	61	131	2.0	0.36	0.5	
YB7-A	8	124	137	76	135	3.0	0.6	0.8	
YB7C-A	8	124	130	90	114	3.0	0.6	0.8	
YB7L-B	8	124	137	76	135	2.9	0.6	0.8	
YB9A-A	9	124	138	77	157	3.1	0.6	0.9	
YB9L-A2	9	124	135	75	139	3.1	0.6	0.9	
YB9-B	9	130	138	77	141	3.1	0.6	0.9	
YB9L-B	9	130	138	77	141	3.1	0.6	0.9	
YB10A-A2	12	160	136	91	156	4.0	0.8	1.2	





Type	Capacity Ah/10HR	CCA (A)	Max. Dimensions			Weight with Acid (kg)	Acid Volume (liter)	Regular Charge Current (amp.)	Assembly Figure
			(mm)						
			L	W	H				
YB10L-A2	12	160	136	91	146	4.2	0.8	1.2	
YB10L-B	12	160	136	91	146	4.0	0.8	1.2	
YB10L-B2	11	160	136	91	146	4.0	0.8	1.1	
SYB10L-A2	12	160	136	91	146	4.0	0.8	1.2	
YB12A-A	12	165	136	82	162	4.1	0.8	1.2	
YB12AL-A	12	165	136	82	162	4.0	0.75	1.2	
YB12AL-A2	12	165	136	82	162	4.0	0.75	1.2	
YB12A-AK	10	165	136	82	162	3.5	0.8	1.0	
YB12A-B	12	165	136	82	162	4.0	0.75	1.2	
YB12B-B2	12	165	161	91	131	4.0	0.8	1.2	
YB12C-A	12	165	136	82	176	4.3	0.8	1.2	
YB14-A2	14	190	136	91	168	4.6	0.9	1.4	
YB14-B2	14	190	136	91	168	4.6	0.9	1.4	
YB14A-A1	14	190	136	91	178	4.5	0.9	1.4	
YB14A-A2	14	190	136	91	178	4.5	0.9	1.4	
YB14L-A	14	190	136	91	168	4.6	0.9	1.4	
YB14L-A1	14	190	136	91	168	4.6	0.9	1.4	
YB14L-A2	14	190	136	91	168	4.6	0.9	1.4	
YB14L-B2	14	190	136	91	168	4.6	0.9	1.4	
SYB14L-A2	14	190	136	91	168	4.6	0.9	1.4	
SYB14L-B2	14	190	136	91	168	4.6	0.9	1.4	
YB16AL-A2	16	200	207	72	164	5.3	1.1	1.6	
YB16B-A	16	207	161	91	162	5.1	1.0	1.6	
YB16B-A1	16	207	161	91	162	5.1	1.0	1.6	
HYB16A-AB	16	210	152	92	182	5.0	0.9	1.6	
YB18-A	18	235	181	92	164	5.8	1.2	1.8	
YB18L-A	18	235	181	92	164	5.8	1.2	1.8	
YB16-B	19	240	176	101	156	6.3	1.2	1.9	
YB16HL-A-CX	19	255	176	101	156	6.3	1.2	1.9	
YB16CL-B	19	240	176	101	175	6.1	1.2	1.9	
SYB16L-B	19	245	176	101	156	5.9	1.3	1.9	
Y50-N18A-A	20	260	206	91	177	6.5	1.5	2.0	
Y50-N18L-A	20	260	206	91	163	7.4	1.4	2.0	
Y50-N18L-A3	20	260	206	91	166	7.4	1.4	2.0	
SY50-N18L-AT	20	260	206	91	163	6.5	1.4	2.0	
Y60-N24-A	28	300	186	126	178	8.6	1.7	2.8	
Y60-N24L-A	28	300	186	126	178	8.6	1.7	2.8	
Y60-N24AL-B	28	300	186	126	176	8.6	1.7	2.8	
YB30L-B	30	300	168	132	176	8.5	1.7	3.0	
YHD-12	32	240	207	132	167	8.3	2.2	3.2	

# Super MF

Absolutely free from maintenance and acid spillage, designed for use in any position and in a wider range of temperatures from -20°C to +50°C.

The unique gas recombination system remarkably prolongs battery life in addition to extremely stronger cranking performance.



## SPECIFICATIONS

\*The CCA(Cold Cranking Amps)rating is for reference only. The CCA rating is theoretically calculated value. Actual performance may vary due to test conditions.

Type	Capacity Ah/10HR	*CCA (A)	Max.Dimensions			Weight with Acid (kg)	Acid Volume (liter)	Regular Charge Current (amp.)	Assembly Figure
			(mm)						
			L	W	H				
<b>"SUPER MF"</b>									
○YTR4A-BS	2.3	45	113	48	86	1.1	0.14	0.3	
○YT4B-BS	2.3	40	113	38	85.5	1.1	0.12	0.3	
YT4L-BS	3	50	113	70	85	1.6	0.18	0.4	
YT5L-BS	4	45	113	70	105	2.0	0.24	0.5	
▲YTX5L-BS	4	70	113	70	105	2.0	0.24	0.5	
YTX7L-BS	6	85	113	70	130	2.5	0.33	0.6	
YT7B-BS	6.5	85	150	65	93	2.7	0.33	0.7	
YTX7A-BS	6	90	150	87	93	2.6	0.33	0.7	
YTX9-BS	8	120	150	87	105	3.0	0.40	0.9	
YT12B-BS	10	180	150	69	130	4.1	0.50	1.0	
YT12A-BS	10	175	150	87	105	3.5	0.50	1.0	
YTX12-BS	10	180	150	87	130	4.2	0.60	1.2	
YTX14-BS	12	200	150	87	145	4.6	0.69	1.4	
YTX15L-BS	13	230	175	87	130	4.6	0.75	1.4	
YTX16-BS	14	230	150	87	161	4.7	0.78	1.4	
YTX16-BS-1	14	230	150	87	161	4.7	0.78	1.4	
◆YTX20-BS	18	270	175	87	155	6.3	0.93	1.8	
YTX20L-BS	18	270	175	87	155	6.3	0.93	1.8	
*YTX20A-BS	17	270	150	87	161	6.0	0.82	1.7	

○ : with Faston terminal    ▲ : YTX5L-BS:Has higher discharge rate performance thanYT5L-BS.

◆ : USA origin    \* : Supplied from GSYuasa Group affiliates.

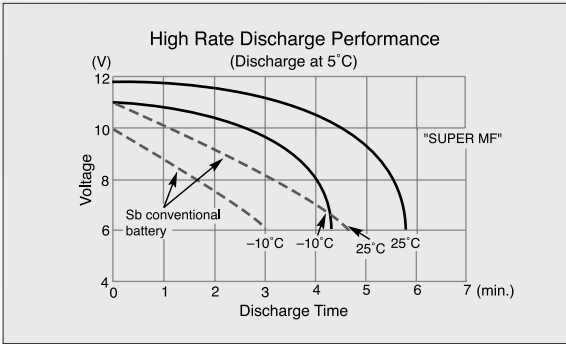
## HIGH PERFORMANCE MAINTENANCE FREE

Type	Capacity Ah/10HR	*CCA (A)	Max.Dimensions			Weight w/o Acid (kg)	Acid Volume (liter)	Regular Charge Current (amp.)	Assembly Figure
			(mm)						
			L	W	H				
◆YTX14AH-BS †††	12	210	134	89	166	3.5	0.69	1.2	
◆YTX14AHL-BS	12	210	134	89	166	3.5	0.69	1.2	
◆YTX20CH-BS	18	270	150	87	161	5.1	0.82	1.8	
◆YTX20H-BS	18	310	175	87	155	5.6	0.93	1.8	
◆YTX20HL-BS	18	310	175	87	155	5.6	0.93	1.8	
◆YTX20HL-BS-PW	18	310	175	87	175 <sup>5</sup>	5.6	0.93	1.8	
◆YTX24HL-BS	21	350	205	87	162	6.5	0.99	2.1	

◆ : USA origin    ††† : Includes 10mm spacer for additional height required in replacing YB14A-A1 and YB14A-A2.

■ **SUPERIOR HIGH RATE PERFORMANCE**

The electrically low resistant separator and heavyduty plates allow the SUPER MF batteries to yield 30% more and faster starting power over conventional batteries.

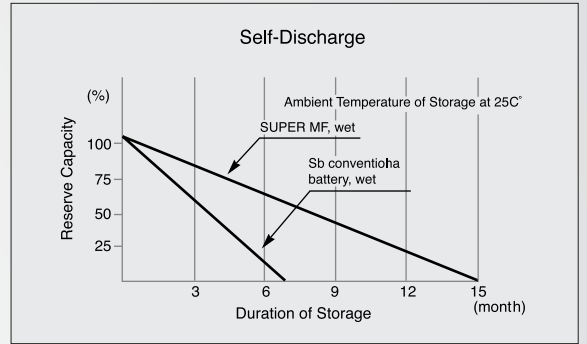


■ **SHELF LIFE**

The special plate material and the bone dry-charge construction enable the storage for nearly 2 years without noticeable loss of charge retention.

■ **LOWEST SELF-DISCHARGE**

The calcium grid reduces the self-discharge rate to only 0.2% a day against 0.5-1.0% for conventional batteries.



■ **TOUGHNESS**

Even if the batteries are left discharged for considerably long periods, a simple recharge will help restore full charge.



**NEW:**

**Latest evolution NITRO YTX models:**

**Advantages:**

- Container in ABS instead of PP (for higher mechanical resistance)
- Rubber Seal instead of plastic seal cover (for better sealing)
- Copper Terminal instead of Lead (for less resistance / higher starting capacity)

**Safety Valve/ Flame Arrestor**  
relieves excess pressure.

**Thru-Partition Construction**  
provides shorter current path with less resistance than "over the partition" construction – you get more cranking power when you need it.

**Patented Sealed Post**  
prevents acid seepage, reduces corrosion – extends battery life.

**Special Active Material**  
is compounded to withstand vibration, prolong battery life and dependability.

**Heat Sealed Case to Cover**  
protects against seepage and corrosion – bonded unit gives extra strength.

**Special Grid Design**  
withstands severe vibration, assures maximum conductivity.

**Polypropylene Cover and Container**  
assures reserve electrolyte capacity for cooler operating temperatures; gives greater resistance to gas and oil – and impact in extreme weather conditions!

**Special Separator**  
provides virtually maintenance free operation and makes the battery spill-proof. AGM Technology eliminates water loss.

# Super Sealed Activated

## Valve Regulated Wet Charged Batteries: THE NEXT GENERATION

The latest evolution in batteries are the Valve Regulated & Wet Charged batteries. Thanks to very innovative technology, these sealed batteries have stronger cranking capacity for a smaller battery volume. Basically these Electrolyte filled types use the same gas recombination technology with venting valves as the Maintenance Free batteries, but the most important difference is that these batteries are supplied already filled with acid.



### The advantages of these batteries are:

- Higher starting capacity for smaller volume & weight
- Immediately ready for use
- Absolutely no acid spillage
- Can be used in any position
- Easy and safe on transport
- Impossible to make mistakes with acid filling
- Absolutely maintenance free after installing

### Important information for Dealers:

Valve Regulated & Wet Charged batteries are supplied in the best possible conditions. However you must always carefully check the **open circuit voltage** before installing the battery: this should be **12.50 Volt or more**. If the **open circuit voltage is lower than 12.50 Volt**, you must charge the battery properly in order to obtain maximum battery life. In all Electrolyte filled battery packagings, detailed charging instructions are included. After checking and eventually charging the battery, she is ready for years of Maintenance Free and Unconcerned use!

Type	Capacity Ah/10HR	*CCA (A)	Max. Dimensions (mm)			Weight with Acid (kg)	Acid Volume (liter)	Regular Charge Current (amp.)	Assembly Figure
			L	W	H				
<b>"SUPER MF" SEALED, NON-SPILLABLE</b>									
YTC4L-BS	4	75	113	70	85	1.7	N/A	0.4	
YTC5L-BS	5	80	113	70	105	2.1	N/A	0.5	
YT7B-4	6.5	85	150	65	93	2.7	N/A	0.7	
YT9B-4	8	115	150	70	105	3.4	N/A	0.8	
YT12B-4	10	125	150	69	130	4.1	N/A	1.0	
YT14B-4	12	135	152	70	145	4.6	N/A	1.2	
<b>"INTERGRATED MF", WET-CHARGED, NON-SPILLABLE</b>									
YTZ3	2.5	-	113	70	85	1.4	N/A	0.25	
YTZ5S	3.5	60	113	70	85	1.6	N/A	0.35	
YTZ6	5	80	113	70	105	2.3	N/A	0.5	
YTZ7S	6	130	113	70	105	2.1	N/A	0.6	
YTZ10S	8.6	190	150	87	93	3.2	N/A	0.9	
YTZ12S	11	210	150	87	110	3.7	N/A	1.1	
YTZ14S	11.2	230	150	87	110	3.9	N/A	1.1	

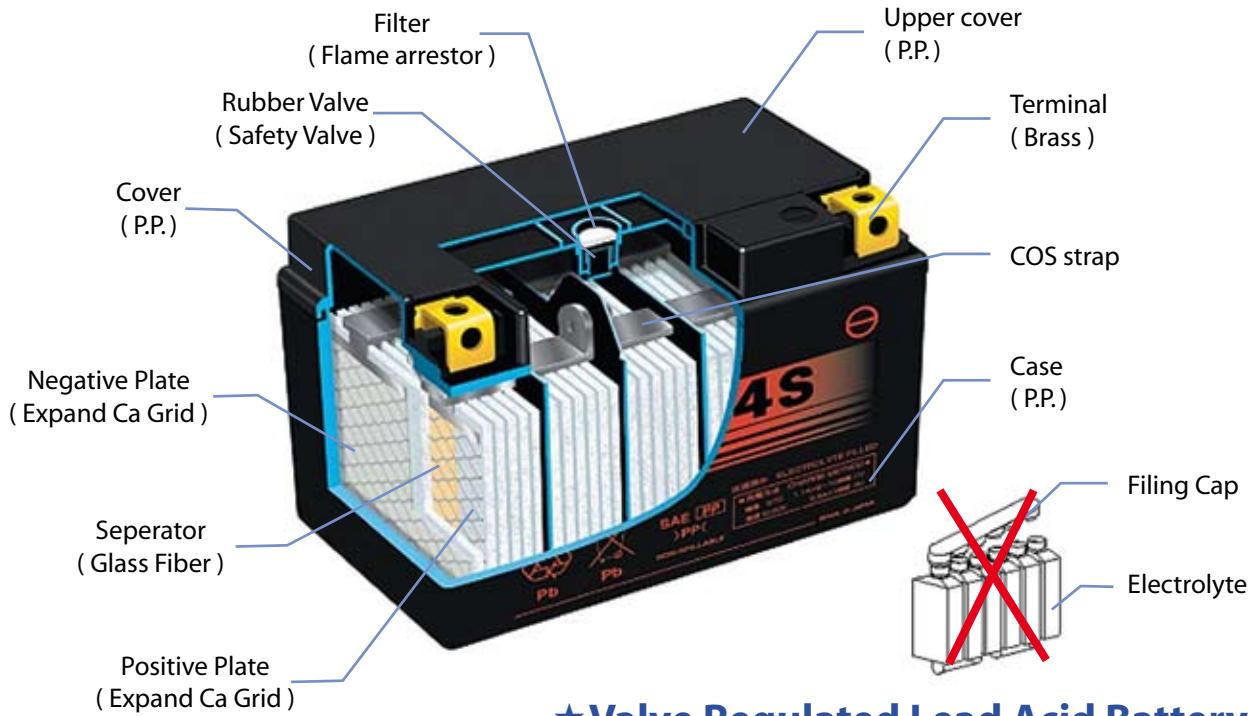
## NITRO High Performance Scooter Battery

### Comparison YTC4L-BS / YT4L-BS / YB4L-B

	YTC4L-BS	YT4L-BS	YB4L-B
Dimensions (LxWxH) in mm	114 x 71 x 86	112 x 70 x 85	120 x 70 x 92
Type of battery	Sealed wet charged	Maintenance Free	Conventional
Battery Capacity AH (10H-R)	4 Ah	3 Ah	4 Ah
CCA (Din) in Amps	75 A	50 A	35 A
Acid supplied together with battery	Acid already inside	Separate acid pack	No
Position of use	Any except upside down	Any except upside down	Upright
Transport class	Normal	Dangerous Goods	Normal
Ready for use	Immediately	After filling and charging	After filling and charging

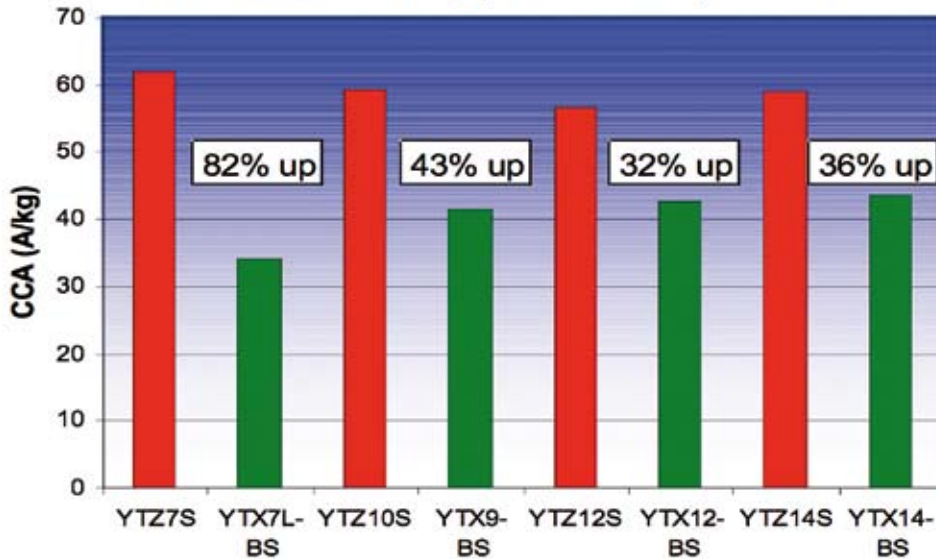


# YTZ type battery Structure



★ Valve Regulated Lead Acid Battery  
★ Non-spillable Battery

## YTZ vs YTX type battery CCA



### YTZ / YTX type Specification

YTZ7S 6Ah, 10.7V(50A) 113x70x 105mm, 2.1kg	YTX7L-BS 6Ah, 10.5V(50A) 113x70x130mm, 2.5kg
YTZ10S 8.6Ah, 10.5V(70A) 150x87x 93mm, 3.2kg	YTX9-BS 8Ah, 10.3V(70A) 150x87x105mm, 2.9kg
YTZ12S 11Ah, 10.0V(100A) 150x87x110mm, 3.7kg	YTX12-BS 10Ah, 10.1V(100A) 150x87x130mm, 4.2kg
YTZ14S 11.2Ah, 10.3V(100A) 150x87x110mm, 3.9kg	YTX14-BS 12Ah, 10.2V(100A) 150x87x145mm, 4.6kg



# Battery terminals

	Terminal Shape			Battery Type				
	Front	Side	Top					
1				YB14L-A1 YTX16-BS-1				
2				YB9L-A2 YB16AL-A2 12N5.5-4A				
3				YB7C-A      YB7L-B Y60-N24L-A Y60-N24-A 12N24-3A				
4				YB12C-A      YB16B-A      Y50-N18L-A3      YB30L-B YTX14AH-BS      YTX14AHL-BS      YTX16-BS      YTX20CH-BS YTX20-BS      YTX20L-BS      YTX20H-BS      YTX20HL-BS YTX24HL-BS				
5				YTZ3      YTZ5S      YTZ6      YTZ7S      YT4L-BS YTX4L-BS      YT5L-BS      YTX5L-BS      YTX7A-BS      YTX7L-BS YTX9-BS      YT12A-BS      YTX12-BS      YTX14-BS      YTX20A-BS YIX30L      YB4L-A      YB4L-B      YB16CL-B				
6				YB3L-A      YB5L-B      YB7-A      YB7B-B      YB9A-A YB10L-B      YB9-B      YB9L-B      YB12A-A      YB12A-AK YB12AL-A      YB12A-B      YB14A-A1      YB16-B      YB16-B-CX YB16L-B      YB16HL-A-CX      12N5-3B      12N5-4B      12N5-5-3B 12N5.5A-3B      12N5.5-4B      12N7-3B      12N7-4A      12N7-4B 12N7B-3A      12N9-4B-1      12N10-3A      12N10-3A-1      12N11-3B 12N12A-4A-1      12N12-3B      6N6-3B      6N6-3B-1      6N11A-1B 6N11A-3A      6N11A-4      6N11-2D      6N12A-2D      B39-6 B49-6      B54-6      B38-6A				
7				HYB16A-AB      YB18-A YB18L-A      Y50-N18A-A Y50-N18L-A      Y50-N18L-A-CX SY50-N18L-AT				
8				YB10A-A2      YB10L-A2      YB10L-B      SYB10L-A2      YB12AL-A2 YB12B-B2      YB14-A2      YB14A-A2      YB14L-A2      SYB14L-A2 YB14-B2      YB14L-B2      SYB14L-B2      12N10-3A-2      12N11-3A-1 12N14-3A				
9				YHD-12 12N9-3A 6N12-4A (Positive Terminal)				
10				51814 51913 52515 53030				
11				YT7B-BS      YT9B-BS(YT9B-4) YT12B-BS      YT14B-BS(YT14B-4) YTZ10S      YTZ12S YTZ14S				
12				YTR4A-BS				
13				YT4B-BS				

# Battery Cross Reference Chart

HIGH PERFORMANCE MAINTENANCE FREE	ACTIVATED & SEALED MAINTENANCE FREE	MAINTENANCE FREE VRLA	HIGH CRANKING	CONVENTIONAL
-	-	-	6YB11-2D	6N11-2D
-	YTC4L-BS	YT4L-BS	YB4L-A / YB4L-B	-
-	-	-	YB5L-B	12N5-3B
-	YTC5L-BS / YTZ6S	YTX5L-BS	-	-
-	-	-	YB7L-B	12N7-3B
-	-	-	YB7-A	12N7-4A
-	YTZ7S (*)	YTX7L-BS	-	-
-	-	-	YB9-B	12N9-4B-1
-	-	-	YB9L-B	12N9-3B
-	-	-	YB9L-A2	12N9-3A-1
-	YTZ10S (*)	YTX9-BS	-	-
-	-	-	YB10L-A2	12N10-3A-2
-	-	-	YB10L-B	12N10-3B
-	-	-	YB12A-A	12N12A-4A-1
-	YTZ12S (*)	YTX12-BS	-	-
YTX14AH-BS	YTZ14S (*)	YTX14-BS	YB14-A2, YB14-B2	-
YTX14AH-BS ###	-	-	YB14A-A1, YB14A-A2	-
YTX14AHL-BS	-	-	YB14L-A2, B2	12N14-3A
YTX20H-BS ‡	-	YTX20-BS ‡	YB16-B	-
YTX20H-BS ‡	-	YTX20-BS ‡	YB18-A	-
YTX20HL-BS-PW S	YTX20HL-PW S	-	YB16CL-B	-
YTX20HL-BS C	-	YTX20L-BS C	-	-
YTX20HL-BS ‡	-	YTX20L-BS ‡	YB16L-B	12N16-3B
YTX20HL-BS ‡	-	YTX20L-BS ‡	YB18L-A	-
YTX24HL-BS ##	YTX24HL ##	-	Y50-N18L-A	-
YTX24HL-BS	YTX24HL	-	Y50-N18L-A3	-
YTX24HL-BS ## (▲)	YTX24HL ## (▲)	-	SY50-N18L-AT	-
-	YIX30L	-	YB30L-B	-
-	YIX30L	-	53030	Y60-N24AL-B

## Legend

<b>VRLA</b>	Valve Regulated Lead Acid.
<b>###</b>	Includes 10mm spacer for use in replacing YB14A-A1 and YB14A-A2.
<b>S</b>	Includes 20mm spacer for use in replacing YB16CL-B.
<b>c</b>	Requires use of Yuasa Cover/Spacer Kit part no. 478651
<b>‡</b>	The YTX20 series batteries may be used as an optional upgrade, but some modification to the hold down may be necessary. See label for retrofit cautions.
<b>##</b>	Top and front terminal mounts only.
<b>(▲)</b>	Eliminates need for sensor (needs to be disabled).
<b>(*)</b>	Smaller dimensions but better performance (see page 11)
<b>YT12B-4 / YT12B-BS</b>	This is same battery: YT12B-4 is GS indication / YT12B-BS is YUASA indication

## Designation of Battery Type Numbers

### Examples:

6	N	2	-	2	A	-	8	Y	50	-	N	18	L	-	A	YB	16	A	L	-	A	2	YT	Z	10	S	
12	N	12	A	-	4	A	-	1	h	j	b	i	e	f	h	i	d	e	f	g	Y	X	7	L	-	B	S
a	b	c	d	e	f	g																					

### Designations:

- a - nominal voltage
- b - vented type (normal type)
- c - battery capacity at 10 hour rate
- d - indication of different size of the same capacity batteries
- e - polarity location (see Fig.1), configuration
- f - location of opening for exhaust (see Fig.2)
- g - type of terminal
- h - symbol of High Cranking batteries
- i - performance level
- j - cranking or starting power
- k - symbol of maintenance free batteries (YT, YTX)
- l - sealed, non-spillable
- m - high performance

Fig. 1

"e" Polarity Location (L indicates positive terminal is located at right side.)

- 1 +	+ 2 -	- 3 +	+ 4 -
6N4C-1B	6N2-2A	YB10L-A2	YB12A-A

Fig. 2

"f" Location of opening for exhaust

A	B	C	D
12N7-4A	YB16CL-B	6N2A-2C	6N6-1D-2

## Metric Conversion Chart

1 inch	=	25.4 millimeters
1 ounce	=	0.03 liters
1 pound	=	0.45 kilograms

1 millimeter	=	0.04 inches
1 liter	=	33.8 ounces
1 kilogram	=	2.2 pounds

# Initial Activation & Installation

**Most problems with batteries today are due to improper initial activation.**

**Many people, even professionals, think it is enough just to put acid in the battery and start the engine...**

**WRONG: newly activated batteries should ALWAYS be CHARGED before you install them into the motorcycle.**

**Otherwise they lose at least 20% of their capacity. This will definitely result in much shorter service life or other battery problems.**

Here we give you the rules for proper initial activation and installation:

## A) Conventional and High Cranking batteries:

Remove the sealing tube – the red cap.

Remove the plugs from the upper side of the battery.

Fill the battery with electrolyte (specific gravity: 1.26 to 1.28).

Fill to upper level indicated on the battery.

Let the battery stand for 30 minutes.

If the acid level has fallen, refill with acid to upper level.

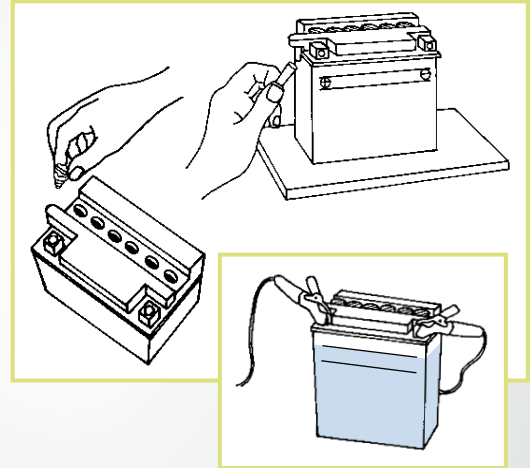
**CHARGE THE BATTERY COMPLETELY**

Charge for three to five hours at the current equivalent of 1/10 of its rated capacity.

Example: YB14L-A2. rated capacity: 14 AH. Charge 3 – 5 hours with 1,4 Amps.

After charging replace the plugs and clean any acid on the outside of the battery.

Now it is ready for installation.



## B) Super MF batteries:

Remove the foil sheet covering the filler ports.

ONLY use the electrolyte container supplied together with the battery. Remove the electrolyte container cap strip. You will use this later to seal the battery. Place the container, sealed top of the cells down, into the filler ports of the battery.

Hold the container and push down to break the seals.

You will see air bubbles rising.

Keep the container in this position until it is completely empty.

Remove the container.

Let the battery stand for 30 minutes.

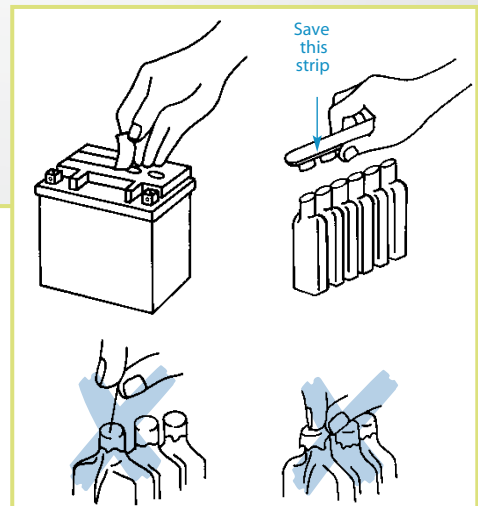
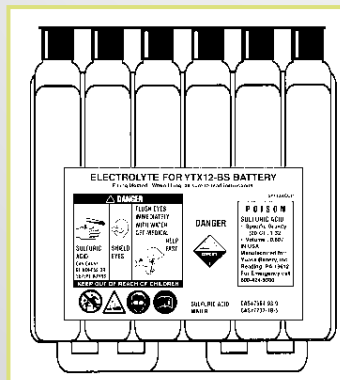
Place the cap strip loosely over the battery filling holes.

**CHARGE THE BATTERY COMPLETELY**

Charge for three to five hours at the current equivalent of 1/10 of its rated capacity.

Example: YTX9-BS: rated capacity: 8 AH.

Charge 3 – 5 hours with 0,8 Amps.



After charging press down firmly with both hands to seat the cap strip.

## C) Sealed VRLA

Check the open circuit voltage using a voltmeter.

A newly activated battery should have 12.8 Volt or higher.

If less, CHARGE THE BATTERY COMPLETELY.

Charge for three to five hours at the current equivalent of 1/10 of its rated capacity.

Example: YTZ12S: rated capacity: 11 AH. Charge 3 – 5 hours with 1,1 Amps.



### REMEMBER

After adding electrolyte, a new battery is approximately 80% charged.

ALL TYPES OF BATTERIES NEED TO BE CHARGED BEFORE INSTALLATION INTO THE MOTORCYCLE

OTHERWISE IT WILL PERMANENTLY LOSE:

- 20% of its maximum rated capacity
- 30% of its service life



# MOTORCYCLE & SCOOTER BATTERY APPLICATION

## HONDA

CC	Model	Year	Battery
50	Bite 50	2001 -	YTZ7S
	C 50 SW	1994 2000	YB4L-B
	C 50 SW	2001	YTZ7S
	C 50 Z/Z2	1979 1980	6N4-2A4
	CB 50 J, F	1981 -	6N4-2A
	CB 50 J, J(B)	1979 1981	6N4-2A-4
	CD 50	1982 -	6N4-2A-4
	CF 50	1982 -	6N4-2A-4
	Chaly 50	- -	6N4-2A-4
	CRM 50	1993 1994	YB3L-A
	CY 50	- -	6N4-2A-4
	Dio 50 (SP50 Dio)	1993 1994	YT4L-B5
	Dio Z4	2002 -	YTZ7S
	Giorno 50	2001 -	YTZ7S
	Giorcub 50	2001 -	YTZ7S
	Gorilla 50	2000 -	YTR4A-B5
	Gyro X	2000 -	YTX7L-B5
	Gyro Up	2000 -	YTX7L-B5
	Gyro Canopy	2000 -	YTX7L-B5
	Julio 50	2001 -	YTZ7S
	KGB 50	1999 -	YTZ7S
	Lead 50	1999	YTZ7S
	Lead 50	2001	YB4L-B5
	Little Cub 50	2000 -	YT4L-B5
	MB5 50	1982 -	YB2,5L-C
	MB 50 S	- -	6N4-2A-7
	MBX 50 S/SDF/SW/FW	1985 1987	YB3L-A
	Monkey 50	- -	YTR4A-B5
	MT 50 S	1990 1991	6N4-2A-7
	MT 50 S, T	1992 1993	6N4-2A-12
	MTX 50FR, RS, S	1985 1989	YB3L-A
	MTX 50 S(E)	1984 -	YB2,5L-C
	NA 50 Express II	1980 1981	6N4-2A-8
	NB 50, M	1983 1987	YT4L-B5
	NC 50 Express	1980 1983	6N4-2A-8
	ND 50 M	1982 -	YB4L-B
	NH 50 MS	1986 1998	YB4L-B
	NP 50, M Sky	1997 -	YB4L-B
	NQ 50, M	1985 -	YB4L-B-CA
	NQ 50, M	1986 1987	YT4L-B5
	SC01 50	1997 -	YT4L-B5
	SE 50	1988 1989	YT4L-B5
	SFX 50 Sport	1995 1999	YTR4-ABS
	SG 50 M	1990 -	YT4L-B5
	SGX 50 Sky	1997 -	YT4L-B5
	SH 50	1987 1989	YB4L-B
	SH 50 Scoopy	1996 1997	YTR4A-B5
	SH 50 Scoopy	2001 -	YTZ7S
	Shadow 50	1997 -	YT4L-B5
	SJ 50 Ball	1997 -	YTR4A-B5
SK 50, M	1992 1994	YT4L-B5	
SK 50, M	1997 1998	YTR4A-B5	
Sky Dax 50	1999 -	YT4L-B5	
Sky Vetro	1999 -	YTR4A-B5	
SR 50	1997 -	YT4L-B5	
ST 50 Dax	1998 1997	YT4L-B5	
Sting 50	- -	YB2, 5L-C-2	
SZX 50	2000 -	YTR4A-B5	
TC 50	2000 -	YTX7L-B5	

CC	Model	Year	Battery	
50	NS 50 F, NS 1	1990 1999	YB3L-A	
	NSR 50, A, F	1987 1995	YB3L-A	
	NU 50 Urban Express	1982 1983	YB2,5L-C-1	
	NU 50 M Urban Express Deluxe	1982 1983	YB4L-B	
	NX 50 M Express SR	1981 1982	YB4L-B	
	PA 50 I, II	1978 1983	6N4B-2A-5	
	PK 50, M, SM	1990 1999	YT4L-B5	
	Press Club 50	2000 -	YT4L-B5	
	PK 50 ST / DX Wallaroo	- -	YT4L-B5	
	PX 50 E	- -	YB4L-B	
	PX 50 L	- -	YB4L-B	
	PXR 50	- -	YB4L-B	
	SA 50LX, N, S, SR	1988 2001	YT4L-B5	
	SB 50	1989 1990	YT4L-B5	
	Vision 50	1985 1994	YTX4L-B5	
	X8R 50 Y/S	1999 -	YTR4A-B5	
	X8R 50 X	1999	YTR4A-B5	
	Zoomer 50	2001 -	YTZ7S	
	Z 50 J	1992 -	YTR4A-B5	
	Z 50 J, 2, 3	1979 1991	6N2A-2C-3	
	ZB 50 P Monkey	1988 -	YT4L-B5	
	ZX 50	1994 -	YTR4A-B5	
	70	C 70, DM	1982 1984	YB5L-B
		C 70	1980 -	6N11-2D
		C 70-MA	1990 -	6N4-2A-4
C 70 Passport		1980 1981	6N11-2D	
C 70 Passport		1982 1983	YB5L-B	
C 70 CM		1983 1984	6N4-2A-4	
C 70 CMP		1997 -	YB4L-B	
C 70 W		1995 -	YB4L-B	
C 70 Z, Z2		1979 1993	6N4-2A-4	
CD 70		1981 -	6N4-2A-4	
CD 70 II PK		1992 -	YB2,5L-C	
CF 70		1982 -	6N4-2A-7	
CT 70		1991 1994	YT4L-B5	
CT 70 Trail		1980 1982	6N4-2A-8(6)	
ST 70		1989 1996	YT4L-B5	
ST 70 Dax	1980 -	6N2-2A-8		
75	CRM 75, MTX 75 R	1989 1994	YB3L-A	
	MBX 75 FW	1983 -	YB3L-A	
	NSR 75	1992 1994	YB3L-A	
	SA 75 M	1991 -	YT4L-B5	
	Scoopy 75	1993 1994	YB5L-B	
80	SH 75	1987 1989	YB5L-B	
	CH 80	1986 -	YT5L-B5	
	CH 80 Elite	1993 2003	YT5LBS	
	CY 80	1980 -	6N4-2A-4	
	MB 80 S	1980 -	6N4-2A-7	
	MBX 80 SW/FW/DX	1985 1987	YB3L-A	
	MCX 80 S	1983 -	YB3L-A	
	MT 80 S	1980 -	6N4-2A7	
	MTX 80 C	1982 -	YB2, 5L-C-2	
	MTX 80 RS/R2	1987 -	YB3L-A	
90	NH 80 MD, SD, MS	1986 1994	YB5L-B	
	XL 80 S	1980 1982	6N4C-1B	
	XL 80 S	1983 1985	6N4-2A-8	
	C 90M	1982 1993	YB5L-B	
	C 90 CW	1995 -	YB4L-B	

# HONDA

CC	Model	Year		Battery
90	C 90 D,Z	1992	1993	6N4-2A-4
	EZ 90 Cub	1991	1996	YT5L-BS
	Shadow 90	1998	-	YT4L-BS
	Super Cub 90	-	-	YT4L-BS
	TH 90 T	1996	-	YT4L-BS
100	BC 100	-	-	YT4L-BS
	C 100-M	1988	1992	YB5L-B
	C 100-MA	1987	-	YT4L-BS
	C 100-TH	1992	-	YT4L-BS
	CB 100	1970	-	6N6-3B-1
	CB 100 N	1981	-	6N6-3B
	EX 100 Bali	1997	-	YT5L-BS
	GL 100 II	1983	-	YB2.5L-C
	H 100 S	1986	1988	6N4A-2A-7
	NF 100 M	1997	-	YTX5L-BS
	NH 100-1D	1998	-	YTX5L-BS
	NH 100-1D	1984	-	YB5L-B
	SH 100	2000	-	YTX5L-BS
	SH 100 Scoopy	1996	-	YT5L-BS
	SJ 100 Bali EX	1997	-	YT5L-BS
	XL 100	1985	1990	6N4C-1B
	XL 100 S	1979	1980	6N4-2A-4
	XL 100 S	1981	1982	6N4C-1B
	XL 100 S	1983	1985	6N4-2A-4
	110	CT 110 Trail	1980	1984
CT 110 Trail		1986	-	6N4-2A-4
LS 110-TH		1989	1992	YB3L-A
NT 110 V		1997	-	YB2.5L-C
NT 110 MV		1997	-	YB4L-B
NZ 110 M, MS		1993	-	YB2.5L-C
NZ 110 MM		1993	-	YB4L-B
NZ 110 S, S1, RS		1989	1992	YB2.5L-C
NZ 110-TH		1987	-	YB2.5L-C
TH 110-MA, M		1991	-	YB2.5L-C
125	CA 125 Rebel	1995	2000	YTX7L-BS
	CB 125 B6	-	-	6N12A-2D
	CB 125 K	-	-	6N12A-2D
	CB 125 RS	1983	-	YB2.5L-C
	CB 125 S, S III-V	1979	1982	6N6-3B
	CB 125 T, T II	1990	1993	12N9-4B-1
	CB 125 TD	1982	-	YB9-B
	CBR 125 R	2004	-	YTZ6S
	CD 125 T	-	-	YB9-B
	CG 125	1980	1991	6N6-3B
	CG 125	1992	-	YB3L-A
	CG 125 Kick Starter	-	-	YT4L-BS
	CG 125 E-Starter	-	-	YTX5L-BS
	CH 125 Elite	-	-	YB9-B
	CH 125 Spacy	1988	1995	YTX9-BS
	CHA 125 T	1996	-	YTX9-BS
	City Fly 125	1998	-	YTX5L-BS
	CL 125 Scrambler	1973	1975	6N4C-1B
	CLR 125	1999	-	YTX5L-BS
	CM 125 C	-	-	12N9-4B-1
	CRM 125 R	1990	2000	YT4L-BS
	CT 125 Trail	1977	1989	6N4C-1B
	Dylan 125	-	-	YTX7L-BS
	Pantheon 125	1999	-	YTR9-BS
	Pantheon 125	2000	2003	YTX7L-BS
	Spacy 125	-	2001	YTZ12S
	SH 125	2001	-	YTZ12S
	SH 125	-	2001	YTX7L-BS
	TL 125	1988	-	6N2-2A

CC	Model	Year		Battery
125	TMX 125	1985	-	6N6-3B
	XL 125 Varadero	1999	2000	YTX7L-BS
	XL 125 Varadero	2001	2006	YTZ7S
	VT 125 Shadow	2000	-	YTX7L-BS
	VT 125 Shadow	-	2001	YTZ7S
	XL 125	1985	1990	6N4C-1B
	XLR 125	1982	1989	YB3L-A
	XL 125 R	1985	1987	YB3L-A
	XL 125 S	1979	1983	6N4-2A-4
	XL 125 S	1984	-	6N4C-1B
	XLR 125 R	1998	-	YTX7A-BS
	FES 125	2000	-	YTR9-BS
	GL 125 II	1987	1997	YB2.5L-C
	INNOVA	2004	-	YTZ7S
	MBX 125 F	1985	-	YB5L-B
	MT 125 Elsinore	1974	1976	6N6-3B
	MTX 125 R, R2	1986	1987	YB5L-B
	MTX 125 RW, RW-TH	1985	1990	YB3L-A
	NES 125	2000	-	YTX7L-BS
	NH 125 Lead	1983	1986	YB5L-B
	NS 125 F	1989	-	YB5L-B
	NSR 125 R, R2, R3	1987	-	YB5L-B
	NSR 125 F III	1992	-	YTX5L-BS
	NSR 125 R	1997	-	YTX5L-BS
	NX 125 Transcity	1989	1996	YB9-B
NX 125 Transcity	1997	-	YTX7L-BS	
NZ 125	1993	-	YB3L-A	
135	HX 135, -TH	1984	1987	YB2.5L-C
145	GL 145 II	1983	1988	YB2.5L-C
150	CH150 Elite Deluxe	1985	1986	YB9-B
	CBX 150 S	1988	-	YB7L-B
	FES 150 Pantheon	1998	-	YTR9-BS
	Foresight 150	-	-	YTX7L-BS
	FSX 150	1998	-	KW6-840
	NES 150	2000	-	YTX7L-BS
	NSR 150, R, R2	1989	-	YB2.5L-C
	NSR 150, R, R2	1994	1998	YB3L-A
	NX 150	1989	-	YB7L-B
	XLR 150	2000	-	YTX5L-BS
156	GL 156 S	1995	-	YB2.5L-C
160	CL 160 Scrambler	1966	1968	YB9-B
	CB 160 Sport	1965	1969	YB9-B
175	CB 175 / K Super Sport	1969	1987	YB9-B
	CL 175 / K Scrambler	1968	1987	YB9-B
	SL 175 Motosport	1970	1972	12N5-4B
185	XL 175	1973	1978	6N6-3B
	CM 185 T, T Twinstar	1978	1979	6N12A-2D
200	CT 185	1982	1986	6N4C-1B
	XL 185 S	1979	1983	6N4-2A-4
	CB 200	1974	1976	12N9-4B-1
	CBX 200 S	1993	-	YB7L-B
	CL / CB 200 Scrambler	1995	-	YB9-B
	CM 200 T	1985	1988	YTX12-BS
	CM 200 T	1987	1989	12N9-4B
	CM 200 T Twinstar	1980	-	6N12A-2D
	CM 200 T Twinstar	1981	1982	12N9-4B-1
	CT 200	1986	1989	YB9-B
	GLS 200	1994	-	YB7L-B
	MTX 200 RW	1983	-	YB3L-A
	TLR 200	1986	1987	6N2-2A
	TR 200	1986	-	YTX9-BS
	TR 200	1987	-	YTX7A-BS
XL 200 R	1983	1984	12N9-4B-1	
XR 200	2000	-	YTX7L-BS	

# HONDA

CC	Model	Year	Battery		
250	CA 250 Rebel	-	-	YTX7L-BS	
	CA 250 T	1995	-	YTX7L-BS	
	CA 250 TS	1997	-	YTX7L-BS	
	CB 250 FV Hornet	-	-	YTX7L-BS	
	CB 250 G, K, N, ND	1982	-	YB12A-A	
	CB 250, R	1994	1999	YTX7L-BS	
	CB 250 RS	1980	-	YB9-B	
	CB 250 Nighthawk	1991	2001	YTX7L-BS	
	CB 250 T2 Twin	1979	-	YB12A-A	
	CBX 250 RS-YA	1985	1987	YTX9-BS	
	CD 250 U	1985	1989	YTX9-BS	
	CH 250	1987	1989	YTX12-BS	
	CJ 250 T	-	-	YB9-B	
	CL 250 S	1982	-	YB9-B	
	CM 250 C Custom	1982	1983	YB9-B	
	CMX 250 C Rebel	1985	1987	YB9L-B	
	CMX 250 C Rebel	1996	2003	YTX7L-BS	
	CMX 250 CD Rebel, LTD	1986	-	YB9L-B	
	CRF 250 X	2004	2006	YTZ7S	
	NX 250	1988	1990	YTX7L-BS	
	CMX 250 C3	2001	-	YTX7L-BS	
	CN 250 Helix	1989	1997	YTX12-BS	
	CN 250 Spazio	-	-	YTX12-BS	
	FES 250 V Foresight	1997	1999	YTX12-BS	
	Foresight 250	2000	-	YTZ12S	
	Forza 250	2000	-	YTZ12S	
	FTR 250	-	-	YTX5L-BS	
	MT 250 Elsinore	1974	1976	6N6-3B	
	NSR 250 RR/R2T	1997	-	YB3L-A	
	PS 250	2004	-	YTZ12S	
	NX 250	1988	1995	YTX7L-BS	
	VT 250 CS	1997	-	YTX7L-BS	
	VT 250 C -V Twin Magna	-	-	YTX7L-BS	
	VTR 250 Interceptor	1988	1990	YB9-B	
	XL 250	1972	1976	6N6-3B	
	XL 250 R	1982	1987	YB3L-A	
	XL 250 S	1978	1981	6N4-2A-4	
	XR 250 L, R	1991	1998	YT4L-BS	
	XR 250	-	-	YTX5L-BS	
	350	CB 350 F, CB 350 K	-	-	YB12A-A
XL 350		1974	1978	6N6-3B	
XL 350 R, XR 350 R		1984	1987	YB3L-A	
360	CB 360 G	1974	1976	YB12A-A	
	CB 360 T, Scrambler 360	1974	1976	12N12A-4A-1	
400	CJ 360 T	1976	1977	12N9-4B-1	
	CB 400F CB-1	1989	1990	YTX9-BS	
	CB 400 SS	-	-	YTR4A-BS	
	CB 400 Super Four	2001	-	YTZ10S	
	CB 400 T Hawk /Hawk II	1978	1981	YB12A-A	
	CB 400 T Hawk I	1978	1979	12N9-4B-1	
	CBR 400 RR	1986	1989	YTX9-BS	
	CM 400 A Hondamatic	1979	1983	YB12A-A	
	CM 400 C Custom	1981	-	YB12A-A	
	CM 400 E/T	1979	1982	YB12A-A	
	NV 400 DC Shadow Skasher	2001	-	YTZ10S	
	NV 400 DC Shadow	2001	-	YTX14-BS	
	NV 400 Steed	2001	-	YTZ10S	
	NS 400 R	1985	-	YT5L-BS	
	NV 400 C	1995	-	YTX9-BS	
	Silver Wing 400	2001	-	YTZ12S	
	VFR 400 R III	1990	1991	YTX7A-BS	
	450	CB 450 S	1986	1987	YB12A-B
		CB 450 S	1988	-	YB14-B2

CC	Model	Year	Battery	
450	CB 450 N	1985	-	YB12AL-A
	CB 450 SC Nighthawk	1985	1986	YB12A-A
	CB 450 T Hawk	1982	-	YB12A-A
	CM 450 A	1982	1983	YB12A-A
	CM 450 C Custom, E	1982	1983	YB12A-A
	CMX 450, Rebel	1986	1988	YB12A-A
	CRF 450 X	2005	2006	YTZ7S
	CB 500 F	2004	2006	YTZ10S
	CB 500 S	1994	2003	YTX9-BS
	CB 500 T Twin, Four	1975	1976	12N12A-4A-1
500	CBR 500 F	1987	1989	YTX9-BS
	CBF 500 / Abs	2004	2005	YTZ10S
	CX 500 C, E, DT	1978	1982	YB14L-A2
	CX 500 N	-	-	YB12A-A
	CX 500 TC	1982	-	YB14L-A2
	FT 500 Ascot	1982	1984	YB14L-A2
	GB 500	1989	1990	YB12A-B
	GL 500 D	-	-	YB14L-A2
	GL 500, Intercept, Silver Wing	1981	1982	YB14L-A2
	NX 500	1988	1995	YTX9-BS
	VF 500 C V30 Magna	1984	1985	YB12A-A
	VF 500 F, FII Interceptor	1984	1985	YB12A-A
	VT 500 C, E	1983	1985	YB12A-A
	VT 500 C Shadow	1983	1986	YB12A-A
	VT 500 FT Ascot	1983	1984	YB12A-A
	XBR 500	1985	1986	YB12A-B
	XBR 500, S	1987	1988	YB14-B2
	XL 500 R	1982	-	YB3L-A
	XL 500 S	1979	1981	6N4-2A-4
	550	CB 550	1983	1984
CB 550 F		1974	1977	12N12A-4A-1
CB 550 K		1977	1978	12N12A-4A-1
CB 550 SC Nighthawk		1983	-	YB12AL-A
CBX 550 F/FII		1982	1983	YB12AL-A
CB 600 F Hornet		1998	2004	YTX7L-BS
CB 600 F / SF Hornet		-	2002	YTZ7S
CBF 600 Naked		2004	2006	YTX7L-BS
CBR 600 F / SP		2001	2006	YTZ10S
CBR 600		1987	2000	YTX9-BS
600	CBR 600 F, FII, FIII, SE	1995	1999	YTX9-BS
	CBR 600 F F4	2001	2006	YTZ10S
	CBX 600 E	1983	-	YB12AL-A
	FJS 600	2001	2006	YTZ12S
	NTV 600 C	1988	1994	YTX9-BS
	Silver Wing 600	2001	-	YTZ12S
	VT 600 C	1988	1997	YTX9-BS
	XL 600 M	1985	1991	YB14-A2
	XL 600 R	1983	1987	YB3L-A
	VLX 600	-	-	YTX9-BS
650	XL 600 V Transalp	1989	1999	YB12A-B
	VT 600 C Shadow	1988	2003	YTX9-BS
	VT 600 C, CD Shadow luxe	2004	-	YTZ10S
	CB 650	1979	1982	YB12A-A
	CB 650 C/SC Custom	1980	-	YB12A-A
	CB 650 SC Nighthawk	1983	1985	YB12AL-A
	CBX 650 E Nighthawk	1982	1983	YB12AL-A
	CX 650 C	1983	-	YB14-A2
	CX 650 Euro, Turbo	1983	-	YB14L-A2
	Deauville 650	1998	2000	YTX9-BS
Deauville 650	2001	-	YTZ10S	
FMX 650	2005	2006	YTX9-BS	
FX 650	-	2001	YTX9-BS	
GL 650 D	-	-	YB14L-A2	

# HONDA

CC	Model	Year	Battery	
650	GL 650 I Interstate	1983	-	YB14L-A2
	650 LS Savage	1986	2003	YB14L-B2
	GL 650 Silver Wing	1983	-	YB14L-A2
	NT 650 Hawk	1988	1990	YTX9-BS
	NT 650 V	1998	2001	YTR9-BS
	NT 650 V	2002	2006	YTZ14S
	NTV 650 Revere	1988	1997	YTX9-BS
	NX 650 Dominator	1988	1997	YTX9-BS
	SLR 650	1997	-	YTR9-BS
	Vigor 650	1999	-	YTR9-BS
	XL 650 V Transalp	2001	2006	YTZ12S
	XR 650 L	1993	1999	YTX9-BS
	XR 650 R	2000	2006	YTX9-BS
	XRV 650 Africa Twin	1988	1989	YB14-B2
XRV 650 Africa Twin	1990	-	YB12A-B	
700	CB 700 SC	1984	1986	YB14L-A1
	VF C 700 Magna	1984	1986	YB14L-A2
	VF C 700 Magna	1987	1988	YB12A-A
	VF 700 F Interceptor	1984	1985	YB14L-A2
	VFR 700 F, FII Interceptor	1986	1987	YB12A-B
	VF 700 S Sabre	1984	1985	YB14L-A2
	VT 700 C Shadow	1984	1985	HYB16A-A
	VT 700 C Shadow	1986	1987	YB14-B2
	CB 750 A Hondamatic	1976	1978	Y50-N18L-A
	CB 750 A	1976	1978	Y50-N18L-A
750	CB750C Custom	1980	1982	YB14L-A2
	CB 750 C, F, F2	1988	-	YB14L-A2
	CB 750 FII	1991	1998	YB14-A2
	CB 750 FA	1993	1995	YB14-A2
	CB 750 K/KA/KZ/FA/FC/C	-	-	YB14L-A2
	CB 750 K / Limited Edition	1982	-	YB14L-A2
	CB 750 K1-K7/F1-F2/Four	-	-	12N14-3A
	CB 750 Nighthawk /SC	1982	1983	YB14L-A2
	CB 750 Nighthawk	1991	2002	YB14-B2
	CB 750 SC	1984	1985	YB14L-A1
	CB750F Super Sport	1975	1982	YB14L-A2
	CBX 750 F	1984	1987	YB14-A2
	CBX 750 P2	-	-	YB14L-A1
	NR 750	1992	-	YTX12-BS
	NV 750 Shadow	1997	1998	YTX14-BS
	NV 750 Shadow Slasher	2001	-	YTZ14S
	RVF 750 R (RC45)	1994	1995	YTX9-BS
	Seven Fifty 750	-	-	YB14-A2
	VF 750 C V45 Magna	1988	-	YB12A-A
	VF 750 C V45 Magna	1993	1997	YTX9-BS
	VF 750 C Magna	1982	1983	YB14-A2
	VF750C C2 D Magna	1994	2003	YTX12-BS
	VF 750 F V 45 Interceptor	1983	1985	YB14-A2
	VFR 750 F Interceptor	1986	-	YB12A-B
	VF 750 S V45 Sabre	1982	1983	SYB14L-A2
	VFR 750 F	1987	1989	YB14-B2
	VFR 750 F	1990	1997	YTX12-BS
	VFR 750 R (RC30)	1988	1990	YTX9-BS
	VT 750 C Shadow	1983	1985	HYB16A-A
	VT 750 C Shadow	1987	-	YB14-B2
	VT 750 C II Shadow	1998	1999	YTX14-BS
	VT 750 CD II Shadow Dix	1998	-	YTX14-BS
VT 750 CD / CD2 Shadow Deluxe	1998	1999	YTX14-BS	
VT 750 DC Shadow Spirit	2001	-	YTZ14S	
VT 750 DC Black Widow	2000	-	YTZ14S	
XLV 750 R	1983	-	YB14-B2	
XRV 750 Africa Twin	1990	1992	YB14-B2	
XRV 750 Africa Twin	1993	1998	YTX14-BS	

CC	Model	Year	Battery		
800	PC 800 Pacific Coast	1988	1999	YTX12-BS	
	VFR 800	2001	2006	YTZ12S	
	VFR800 A Interceptor ABS	1998	2001	YTX12-BS	
	VFR 800 P	2001	-	YTZ14S	
	VFR-R 800	-	-	YTX12-BS	
	VFR 800 VTEC / Abs	2-Jun	-	YTZ14S	
	VT 800 C Shadow	1988	-	YB14-B2	
	900	CB 900 C	1980	1982	YB14L-A2
		CB 900 F/FA/FC/FZ Bol d'Or	1979	1983	YB14L-A2
		CB 900 F Hornet / F4	2002	2006	YTZ10S
CBR 900 RR Fire Blad		2000	2002	YTZ10S	
929	CBR 900 RR Fire Blad	1992	1999	YTX9-BS	
	CBR 929 RR	2000	-	YTZ10S	
954	CBR 954 RR	2001	2006	YTZ10S	
	CB 1000 C Custom	1983	-	YB14L-A2	
1000	CB 1000 Big One	-	-	YTX12-BS	
	CB 1000 F	1993	1995	YTX12-BS	
	CBF 1000 / Abs	2006	-	YTZ10S	
	CB 1000 FT	1993	1996	YTX12-BS	
	CBR 1000	-	-	YB14L-B2	
	CBR 1000 F Hurricane	1987	1996	YB14L-B2	
	CBR 1000 RR	2004	2006	YTZ10S	
	CBR 1000 RR FIREBLADE		2004	YTX12-BS	
	CBX 1000 / Super Sport	-	-	YB18L-A	
	CBX 1000 ProLink	1979	1982	YB14L-A2	
	CBX 1000 ProLink	1983	-	YB18L-A	
	CBX 1000 Super Sport (Opt)	1982	-	Y50-N18L-A	
	GL 1000 K1-K3 Goldwing	1975	1979	Y50-N18L-A2	
	RVT 1000 RC51	2000	2001	YTZ12S	
	VF 1000 F/F2/R Bold'r	1985	-	YB16B-A1	
	VF 1000 R / F Interceptor	1984	1986	YB16B-A	
	VT C 1000	-	-	HYB16A-AB	
	VTR 1000 F Firestorm	1998	-	YTX12-BS	
	VTR 1000 F Firestorm	2001	2006	YTZ12S	
	VTR 1000 SP1	2000	-	YTZ12S	
	VTR 1000 F Superhawk	1997	2000	YTX12-BS	
	VTR 1000 F Super Hawk	2001	-	YTZ12S	
	XL 1000 Varadero	1999	2003	YTX14-BS	
	XL 1000 Varadero	2004	2006	YTX20A-BS	
	1100	CB 1100 R/RC/RD	-	-	YB12AL-A
		CB 1100 R/F/Super Sport/ Bold'r	1981	1983	YB14L-A2
		CB 1100 SF	-	-	YTX12-BS
1100 VF 1100S V65 Sabre		1984	1985	YTX20L-BS	
CBR 1100 XX		2001	2006	YTZ12S	
CBR 1100 XX		1997	2000	YTX12-BS	
GL 1100 / Gold Wing		1980	1983	Y50-N18L-A	
GL 1100 A Aspencade		1982	1983	Y50-N18L-A	
GL 1100 I Interstate		1980	1983	Y50-N18L-A	
ST 1100 Pan European/ABS-TCS		1990	1998	YTX14-BS	
VF 1100 C		1985	-	YB18L-A	
VF 1100 C V65 Magna		1983	1986	YTX20H-BS	
VF 1100 C V65 Sabre		1984	1985	YB18L-A	
VT 1100 C		1986	-	HYB16A-AB	
VT 1100 C/C3/T Shadow		2001	2002	YTX14-BS	
VT 1100 C/C3/T Shadow		1998	2000	HYB16A-AB	
VT 1100 C3 T Shadow Spirit Aero		2003	-	YTX14-BS	
VT 1100 C/C2/Shadow Spirit	1999	-	HYB16A-AB		
VT 1100 Shadow C2 Sabre	2000	2002	YTX14-BS		

# HONDA

CC	Model	Year	Battery	
1200	GL 1200 DX	-	-	Y50-N18L-A2
	GL 1200 Gold Wing /Aspen-cade	1984	1987	Y50-N18L-A
	F6C 1200 (Walkyrie)	-	-	YTX14-BS
1300	CB 1300 Super Four	2001	2006	YTZ14S
	CB 1300 DC X4 Type LD	2001	-	YTX14-BS
	ST Pan European ABS	2002	2006	YTZ14S
	STX 1300	2001	2006	YTZ14S
	ST 1300 ABS	2003	2006	YTZ14S

CC	Model	Year	Battery	
1300	VTX 1300 RETRO	2003	2006	YTX14-BS
	VTX 1300 R,S,C	-	2005	YTX14-BS
	GL 1500 A Aspen-cade	1991	1998	Y50-N18L-A3
1500	GL 1500 Gold Wing	1988	1990	Y50-N18L-A3
	GL 1500 I Gold Wing Inter.	1991	1996	Y50-N18L-A3
	GL 1500 SE Gold Wing SE	1991	2000	Y50-N18L-A3
	GL 1500 Valkyrie	1997	2002	YTX14-BS
1800	GL 1800 A Gold Wing	2001	2004	YTX20L-BS
	VTX 1800 C	2000	2004	YTX20L-BS

# KAWASAKI

CC	Model	Year	Battery		
20	AR 20	-	-	6N6-1D-2	
50	AE 50 / AR 50	1992	-	6N6-1D-2	
	AR 50 C2-C4	-	-	YB12A-A	
	AR 50 C5 (GR, UK)	-	-	6N6-3B-1	
	AR 50 C5 (EU)	-	-	YB12A-A	
50	AR 50 C6-C10	-	-	6N6-1D-2	
	AV 50	1992	-	6N6-1D-2	
	KMX 50 A	1988	-	6N2-2A-A	
	MX 50 A	1995	-	6N2-2A-7	
	MX 50 B, B2	1995	-	YB2.5L-C-4	
80	AE 80 / AR 80	1998	-	6N6-1D-2	
	AR 80 C2-C8	-	-	6N6-1D-2	
	KMX 80	1988	-	6N2-2A-7	
80	MX 80 B	1998	-	YB2.5L-C-4	
	AN90B	1995	-	12N5.5A-3B	
	MC1 Series 90	1973	1975	6N4-2A-5	
	G3TR Series 90	1969	1970	6N4-2A-3	
90	G3SS Series 90	1969	1972	6N4-2A-3	
	G3SS Series 90	1973	1974	6N4-2A-5	
	G3SS Series 100	1975	-	6N4-2A-5	
	G4TR Series 100	1973	1975	6N4-2A-5	
100	G5 Series 100	1974	1975	6N4-2A-5	
	G5 Series 100	1972	1973	6N4-2A-3	
	KE 100 -A / KM 100 A	1979	1981	6N6-1D-2	
	KE 100 -A / KM 100 A	1976	1978	6N4-2A-5	
	KE 100, B1- B15 (EU)	-	-	6N4-2A-5	
	KE 100 -B16-B17	1982	-	6N6-1D-2	
	KH 100 -B	1976	1977	6N4-2A-5	
	KH 100 G5-G8	-	-	6N6-3B-1	
	KH 100 H	1995	-	6N6-3B-1	
	KM 100	1992	-	6N6-1D-2	
	KV 100 -A	1976	-	6N4-2A-5	
	125	AR 125 A1A-A8-B1-B2-S	-	-	12N5-3B
		BN 125 A1-A2 Eliminator	2000	2006	YB9-B
EL 125		-	-	YB9-B	
F6 Series 125		1971	1973	6N4-2A-5	
K 125 K		1994	-	6N6-3B-1	
K 125 K7		1994	-	YB3L-B	
KDX 125 A1-A4, SR-N1-B4		1990	1995	YB3L-A	
KE 125 -A8-A12		1995	-	6N6-1D-2	
KH 125 K1-K6		-	-	6N6-3B-1	
KH 125 K7, K10		-	-	YB3L-B	
KH 125 L1		-	-	6N6-3B-1	
KMX 125 A1-A8, A11-B1-B9		1986	-	YB4L-B	
KS 125 Series		1974	1975	6N6-1D2	
175		F7 Series 175	1971	1975	6N4-2A-5
	KDX 175 B	1992	-	6N4B-2A	

CC	Model	Year	Battery	
175	KE 175 -B	1976	1978	6N6-1D-2
	KE 175 D/F	1992	-	6N6-1D-2
200	KDX 200 B1-B2	1992	-	YB3L-A
	EX 250 Ninja	1995	2003	YTX7L-BS
250	EX 250 Ninja	1986	1994	YB9L-A2
	F4 Series 250	1969	1970	12N5.5-4A
	F8 Series 250	1971	1972	6N2-2A-3
	F11 Series 250	1973	1975	6N4-B-2A-3
	GPX 250 R EX 250 F2-F8	1987	-	YB9L-A2
	GPX 250 R II (EX 250 G1)	1988	-	YB9L-A2
	GPZ 250 EX 250 H1-H4	1983	-	YB9L-A2
	GPZ 250 R EX 250 F9-F13	1995	-	YTX7L-BS
	GPZ 250 R EX 250 H5-H9	1995	-	YTX7L-BS
	KE 250 -B	1977	1979	6N6-1D-2
	KH 250 -A	1976	-	12N5.5-4A
	KH 250 B	1976	1977	12N5.5-3B
	KL 250 A	1978	1982	6N6-1D-2
	KL 250 C	1983	1984	6N6-1D-2
	KL 250 - D2-D16	-	-	YB4L-B
	KL 250 G/H Super Sherpa	1997	-	YTX7L-BS
	KLE 250 Anhelu (LE 250 A)	1997	-	YTX7L-BS
	KLR 250 D - KL 250 D	1985	1998	YB4L-A
	KLX 250 B	1982	1983	6N4B-2A
	KLX 250 ES G1/G2	1994	1995	YTX7L-BS
	KLX-R 250	-	-	YB4L-A
	KR 250 B/C - KR-1S	1992	-	YB4L-B
	KZ 250 A	1979	1982	YB10L-A2
	KZ 250 C D G LTD	1980	-	YB10L-A2
	KZ 250 L CSR	1982	-	YB10L-A2
	KZ 250 W LTD	1983	1995	YB10L-A2
LX 250 G/F	1995	-	YB10L-A2	
S1 Series 250	1973	1975	12N5,5-4A	
TR 250 (BJ 250 F)	2002	-	YTX7L-BS	
Z 250 A/C/LTD/J	1992	-	YB10L-A2	
Z 250 GP C1	1981	-	YB9L-A2	
ZR 250 A/B Balius	1991	-	YTX7L-BS	
KMX 200 A2-A5	1997	-	YB4L-B	
KZ 200 A	1977	1979	YB10L-B	
KZ 200 A	1995	-	YB10L-B	
KZ 200 A/C	1992	-	YB10L-B	
D-Tracker 250 (LX 250 E)	2002	-	YTX7L-BS	
EL 250 A	1995	-	YTX7L-BS	
EL 250 A/B/C Eliminator	1988	-	YB9L-A2	
EL 250 D/E/F	-	-	YB9L-A2	
ER 250 A	1995	-	YB9L-B	
ER 250 B2-B3	1983	1984	YB9L-B	
Estrella 250 - BJ 250	1992	-	YTX9-BS	

# KAWASAKI

CC	Model	Year	Battery
250	ZZR (EX 250 H)	1993	- YB9L-A2
	ZZR (EX 250 H)	1994	- YTX7L-BS
305	EX 305 A1/B GP	1983	- YB9L-A2
	KZ 305 A CSR	1981	1982 YB10L-A2
	KZ 305 B CSR	1982	- YB10L-A2
	KZ 305 B LTD	1987	1988 YB10L-A2
350	A7 Series 350	1966	1971 YB9L-B
	F5 Series 350	1970	1971 6N2-2A-3
	F9 Series 350	1973	1975 6N4B-2A-3
	F9 Series 350	1972	- 6N2-2A-3
	GPZ 350 Belt Drive	-	- YB9L-A2
	S2 Series 350	1972	1973 12N5.5-4A
400	EN 400 -Twin	1994	- YB12A-A
	EN 400 B Vulcan	1995	- YB12A-A
	EX4 (EX 400 A2/A3/B)	1994	- YB14L-A2
	FX 400 R (ZX 400 A)	-	- YA12A-A
	FX 400 R (ZX 400 C2-C4/D)	-	- YA12A-AK
	GPX 400 R (ZX 400 F)	-	- YB12A-AK
	GPZ 400 F II (KZ 400 M)	1983	- YB12A-AK
	GPZ 400 R (ZX 400 D)	1985	- YB12A-AK
	GPZ 400 S (EX 400 A)	-	- YB12A-AK
	GPZ 400 S (EX 400 A)	-	- YB14L-A2
	KH 400	1992	- 12N5.5-3B
	KH 400 A	1976	1978 12N5.5-4A
	KSF 400-A (kfx 400)	2003	- YTX9-BS
	KLE 400 (LE 400 A)	1991	- YTX12-BS
	KX 400 H	1979	- YB12A-A
	KZ 400 Deluxe	1977	1978 YB12A-A
	KZ 400 -C / S	1975	- 12N5.5-4A
	KZ 400 -D	1974	1977 YB12A-A
	KZ 400 -J	1980	1982 YB12A-A
	S3 Series 400	1974	1975 12N5.5-4A
	VN 400 A/C Vulcan	1995	- YTX12-BS
	Z 400 Custom (KZ 400 B)	1978	- YB12A-A
	Z 400 F ZR 400 B	1984	- YB12A-AK
	Z 400 FX (KZ 400 E)	-	- YB12A-A
	Z 400 F II (ZX 400 C)	1991	- YB12A-AK
	Z 400 GP (ZX 400 A)	-	- YB12A-AK
	Z 400 LTD II (KZ 400 H/K)	-	- YB12A-A
	ZL 400 A1 Eliminator	1986	- YB12A-AK
	ZRX 400 II (ZR 400 E/F/D)	1995	- YTX9-BS
	ZX-4 (ZX 400 G)	-	- YB12A-AK
	ZX 400 H	1992	- YB12A-A
	ZXR 400 R (ZX 400 L/H)	1992	- YB12A-AK
	ZXR 400 R (ZX 400 M/L)	1991	- YTX9-BS
	ZZR 400 (ZX 400 K)	1992	- YB12A-AK
	ZZR 400 (ZX 400 N)	1993	- YTX12-BS
	440	KZ 440 A LTD	1980
KZ 440 C/D		1980	1984 YB12A-A
450	EN 450 - A 454 LTD	1985	1990 YB12A-A
	Z 450 LTD	1992	- YB12A-A
500	EN 500 - A Vulcan	1990	1993 YB12A-A
	EN 500 - C	1996	2000 YB12AL-A2
	EN 500 LTD	1990	1995 YB12A-A
	ER 5 (ER 500 A/B)	1997	- YTX12-BS
	EX 500-A	1987	1998 YB14L-A2
	EX 500 - D Ninja	1994	2002 YB14L-A2
	GPZ 500 S (EN 500 D/E/F)	1987	1999 YB14L-A2
	H1 Series 500	1969	1972 YB9-B
	H1 Series 500	1973	1975 YB9L-B
	KH 500 -A	1976	- YB9L-B
	KLE 500 / ER5	1991	2006 YTX12-BS
	KZ 500 B/LTD	1979	1980 YB12A-A

CC	Model	Year	Battery
500	VLE 500 A	1991	- YTX12-BS
	ZZR 500 Ninja (ZX 500 D)	1998	- YTX12-BS
	GPZ 550	1982	- YB12A-A
	KZ 550 B / G / LTD / GP	1979	1989 YB12A-A
	KZ 550 -F / LTD	1984	- YB12A-A
	KZ 550 -F Spectre	1983	- YB12A-A
	KZ 550 -H GP	1982	1983 YB12A-A
	Z 550	-	- YB12A-A
	Z 550 H/B/C/F/GP/LTD	1983	- YB12A-A
	ZR 550 A	1983	- YB12A-A
550	ZR 550 -B Zephyr	1990	1993 YB12A-A
	ZR 550 -B Zephyr	1994	1999 YTX12-BS
	ZX 550 -A GPz	1984	1989 YB12A-A
	ER6 N / F	2006	- YTX12-BS
	GPX 600 C Warbird	1988	1997 YB12A-A
	GPZ 600 R (ZX 600 A)	1985	1989 YB12A-A
	KLR 600 A1	1984	1992 YB4L-B
	KLR 600 E/KLR B/KLR A	1985	1991 YB14L-A2
	ZL 600 A Eliminator	1986	1992 YB12A-A
	ZL 600 B Eliminator	1995	1997 YB12A-AK
600	ZX 600 -A / B / C / D Ninja	1985	1996 YB12A-A
	ZX 600 -E / F / G / H Ninja ZX-6 / 6R	1993	2002 YTX12-BS
	ZX 600 -J Ninja ZX-6R	1998	2001 YTX9-BS
	ZX 600 D ZZR	1990	1992 YB12A-A
	ZX-6R (ZX 636 A)	2002	2006 YTX9-BS
	ZX-6RR	2004	2006 YTX9-BS
	ZZR 600	1992	- YB12A-A
	ZZR 600	1993	2006 YTX12-BS
	EJ 650	1999	2000 YTX14-BS
	EJ 650 A / C	2002	- YTX14-BS
650	EJ 650 A/C	2003	- YTX12-BS
	GPZ 650 R	1992	- YB12A-A
	KL 650 B Tengai	1989	1990 YB14L-A2
	KLR 650	1987	- YB14L-A2
	KLR 650 C	1995	1998 YB14L-A2
	KLR 650 R, Tengai	-	- YB14L-A2
	KLX 650	1993	1997 YTX9-BS
	KZ 650 B	1977	1978 YB10L-A2
	KZ 650 C/D/SR/E/LTD/F/ Custom	1978	1983 YB10L-A2
	KZ 650 -H CSR	1981	1983 YB12A-A
700	W 650	2000	2002 YTX14-BS
	W 650	2003	2006 YTX12-BS
	W Series 650	1966	1970 12N7-3B
	Z 650 B/C/D/F	-	- YB10L-A2
	VN 700 Vulcan	1985	- YB14L-A2
	ZN 700 -A LTD	1984	1985 YB14L-A2
	ZN 700 LTD (ZN 700 A)	1995	- YB14L-A2
	GPX 750 R	1986	- YB14L-A2
	KZ 750A-L Ninja ZX 7RR	1984	- YB12A-A
	ZR-7 S ZR750	2000	2003 YTX12-BS
750	ZX750-J Ninja/ZX750-P Ninja 7R	1991	2003 YTX12-BS
	ZR750-C Zephyr	1991	1994 YTX12-BS
	GPZ 750 E/A/G	1992	- YB14L-A2
	GPZ 750 F	1985	- YB14L-A2
	GPZ 750 R	1992	- YB12A-A
	GPZ 750 R Ninja	1985	- YB14L-A2
	GT 750	1992	- YB14L-A2
	H2 Series	1972	1975 12N5.5-4A
	KZ 750 A	1995	- YB14L-A2
	KZ 750 B	1976	1978 YB14L-A2

# KAWASAKI

CC	Model	Year	Battery	
750	KZ 750 B / G / LTD	1976	1980	YB14L-A2
	KZ 750 D	1995	-	YB14L-A2
	KZ 750 -E, H, L LTD	1980	1983	YB12A-A
	KZ 750 -F LTS, Spectre	1982	1983	YB14L-A2
	KZ 750 K LTD KI	1983	-	YB14L-A2
	KZ 750 K LTD / M CSR	1982	1984	YB14L-A2
	KZ 750 -L Ninja	1993	-	YTX9-B5
	KZ 750 LTD / CSR	1976	1979	YB14L-A2
	KZ 750 P GT	1982	1985	YB14L-A2
	KZ 750 -R LIII-LIV	1983	1984	YB12A-A
	KZ 750 Y LTD YI-YII	1982	1983	YB14L-A2
	VN 750 Twin	-	-	YB14L-A2
	VN 750 -A Vulcan	1986	2003	YB14L-A2
	Z 750 B	-	-	YB14L-A3
	Z 750 / Turbo	-	-	YB14L-A4
	Z 750 L/LTD/E/H/Sport	-	-	YB12A-A
	Z 750	2004	2006	YTX9-B5
	ZN 750 -A LTD	1984	1985	YB14L-A2
	ZR-7 / S ZR 750	2000	2001	YTX12-B5
	ZR 750 C / D Zephyr F	1991	2000	YTX12-B5
	ZX 750 -E Turbo, GPz	1984	1985	YB14L-A2
	ZX 750 -F Ninja	1987	1990	YB14L-A2
	ZX 750 -H Ninja ZX-7	1990	-	YB12AL-A
	ZX 750 -H Ninja ZX-7	1989	-	YB14L-A2
	ZX 750 -J Ninja ZX-7	1991	1995	YTX12-B5
	ZX 750 Ninja ZX / 7RR	1996	1997	YTX9-B5
	ZX 750 -P Ninja ZX-7R	1996	2000	YTX12-B5
	ZXR 750 H1 Stinger	1989	1992	YB14L-A2
	ZXR 750 H2 Stinger	1990	-	YB12AL-A2
	ZXR 750 J1 Stinger	1991	-	YTX12-B5
ZXR 750 R (ZX 750 K / M)	1991	-	YTX9-B5	
ZXR 750 (ZX 750 H)	1992	-	YB12AL-A2	
ZXR 750 (ZX 750 L)	1993	-	YTX12-B5	
800	VN 800 -A, B, C Vulcan Classic	1995	2004	YTX14-B5
	VN 800 -A, B, C Vulcan Classic	2005	2006	YTX12-B5
	GPZ 900 R (ZX 900 A)	1991	-	YB14L-A2
900	KZ 900 A, LTD	1976	1977	YB10L-A2
	Z 900 (Z1)	1973	1975	12N14-3A
	Z 900 A/B	1976	1977	YB10L-A2
	Z1 Series 900	1973	1975	YB14L-A2
	ZL 900 -A Eliminator	1985	1991	YB14L-A2
	ZX 900 -A Ninja	1984	1992	YB14L-A2
	ZX 900 -B Ninja / ZX-9R	1994	1997	YTX12-B5
	ZX 900 -C / D Ninja / ZX-9R	1998	1999	YTX9-B5
	ZX 900 -E / F Ninja / ZX-9R	2000	-	YTX9-B5
	ZX 900 R	1994	1997	YTX12-B5
	ZX 900 R	1998	2004	YTX9-B5
	1000	GPZ 1000 RX A	1986	1987
GTR 1000 (ZGT00A)		1986	-	YB18L-A
KLV 1000		2004	2005	YTX14-B5
KZ 1000 A / B LTD		1977	1978	YB14L-A2
KZ 1000 -C Police / Z1-R		1978	1979	YB14L-A2
KZ 1000 -C Police		1980	1981	YB16L-B
KZ 1000 -E ST, Shaft		1979	1980	YB16L-B
KZ 1000 -G Classic		1980	-	YB14L-A2
KZ 1000 -J / M CSR		1981	1983	YB18L-A
KZ 1000 LTD K		1981	-	YB18L-A
KZ1000 LTD CSR		1981	1983	YTX20L-B5
KZ 1000 -R SS Replica		1982	1983	YB18L-A
Z1-R (KZ 1000 D)		1978	1980	YB14L-A2
KZ 1000 P Police		1982	2001	YB18L-A
KZ 1000-P Police		2003	-	YTX20L-B5
Z 1000 A/B/C/D/G		1992	-	YB14L-A2

CC	Model	Year	Battery		
1000	Z 1000 GTR	1992	-	YB18L-A	
	Z 1000 MK2	1979	1980	YB14L-A2	
	Z 1000 J/K/LTD/R	1982	-	YB18L-A	
	Z 1000 ST	1992	2002	YB16L-B	
	Z 1000	2003	2006	YTX9-B5	
	ZG 1000 A 89- / GTR 1000	1994	-	YB18L-A	
	ZG 1000 A Concours	1986	2002	YB18L-A	
	ZGT 1000 A	1995	-	YB18L-A	
	ZL 1000 -A Eliminator /Tomcat	1987	1992	YB14L-A2	
	ZX 1000 -A Concours CN	1996	1997	YB18L-A	
	1100 KZ1100-A LTD	1981	1983	YTX20L-B5	
	ZX 1000 -A Ninja	1986	1992	YB14L-A2	
	ZX 1000 B-ZX 10- Tomcat	1988	1990	YB14L-A2	
	ZX-10R	2004	2006	YT12-B4	
	1100	GPZ 1100 A Unitrack	1983	1985	SYB16L-B
		GPZ 1100 ZX et injection	-	-	12N16-3B
		GPZ 1100 (ZX 1100 E1)	1995	1997	YTX14-B5
		KZ 1100 -A, L LTD	1981	1983	YB18L-A
		KZ 1100 -B GP	1982	-	YB16L-B
		KZ 1100 -B GP	1981	-	YB16L-B
		KZ 1100 D Spectre	1982	1983	YB18L-A
Z 1100 ST (A1/2)		1981	1983	YB18L-A	
Z 1100 B		1992	-	YB16L-B	
Zephyr 1100 (ZRT10A)		1997	1998	YTX16-B5	
ZG 1100 A7-8		1994	-	YB18L-A	
ZN 1100 -B LTD		1984	1985	YB14L-A2	
ZR 1100 A / B		1992	1997	YTX16-B5	
ZRT 1100		1997	1998	YTX16-B5	
ZRX 1100		1999	2000	YTX14-B5	
ZX 1100 A/G/P/Z		1983	1984	YB16L-B	
ZX 1100 -C Ninja ZX-11		1990	1993	YB14L-A2	
ZX 1100 C / G		1999	-	YTX14-B5	
ZX 1100 -D Ninja ZX-11 (CN)		1993	1994	YTX14-B5	
ZX 1100 -D Ninja ZX-11		1995	2001	YTX14-B5	
ZX 1100 -E GPz 1100 / ABS		1995	1997	YTX14-B5	
ZX 1100 C1 ZZR 1100	1990	1993	YB14L-A2		
ZX 1100 NINJA	1993	2001	YTX14-B5		
ZXR 1100 C	1997	2000	YTX14-B5		
ZZR 1100 EU (ZXT10C)	1990	1992	YB14L-A2		
ZZR 1100 EU (ZXT10D)	1993	2001	YTX14-B5		
1200	ZG 1200 A / B Voyager XII	1986	1998	Y50-N18L-AT	
	ZX-12R 1200	2000	2006	YTX14-B5	
	ZRX 1200 S / R	2001	2006	YTX14-B5	
	ZX 1200 A1	2000	2003	YTX14-B5	
	ZZR 1200	2002	2004	YTX14-B5	
	1300	KZ 1300 A	1979	1983	Y50-N18L-A
KZ 1300 B Touring		1980	-	Y50-N18L-A	
Z/ZG 1300 A		1984	1989	Y50-N18L-A	
ZN 1300 A Europe		1983	1992	Y60-N24L-A	
ZN 1300 -A Voyager		1983	1988	12N24-3	
1400		ZZR 1400	2006	-	YTZ14S
	1500	VN 1500 A / C Vulcan 88, SE	1987	1998	Y50-N18L-A
VN 1500, VN 1500 SE Sumo		1988	1994	Y50-N18L-A	
VN 1500 -C Vulcan L		1996	1997	Y50-N18L-A	
VN 1500 -D/E/N Vulcan Classic		1996	2001	YTX16-B5	
VN 1500 F / H		1999	2004	YTX16-B5	
VN 1500 -G/J/L/R Nomad/ Drifter		1999	2003	YTX16-B5	
1600	VN 1500 -P Vulcan Mean Streak	2002	-	YTX16-B5	
	VN 1500 Tourer / Classic	1998	-	YTX16-B5	
	1600	VN1600-A Vulcan Classic	2003	2004	YTX16-B5
2000	VN 2000 Cruiser	2004	-	YTX16-B5	

# SUZUKI

CC	Model	Year	Battery	
50	A 50 KM	1992	6N4-2A-4	
	AC / AS 50	1971	6N4-2A	
	AD 50	1991	YT4L-BS	
	50 Address	1997	YT4L-BS	
	AE 50 M	1991	YT4L-BS	
	AG 50 T	1995	YT4L-BS	
	AH 50	1992	YT4L-BS	
	AJ 50	1995	YT4L-BS	
	AJ 50	2002	YT4B-BS	
	AP 50 / R7	1994	YT4L-BS	
	AY 50 / W / WR / Katana	-	YT4L-BS	
	AZ 50 (Lets II ZZ)	2002	YT4B-BS	
	CP 50	1985	YB4L-B	
	FA 50 / Shuttle	1980	6N2-2A-4	
	FB 50 / M	1991	YT4L-BS	
	FB 50 / M	2002	YT4L-BS	
	GT 50 K/KE/U	1977	6N4B-2A	
	Katana 50 LC	1997	YT4L-BS	
	OR 50	1979	6N4B-2A	
	PK50 PK 500-CA PK50N/50XL	-	YB7-A	
	RB 50	1991	6N4-2A	
	RC 50	2002	YT4L-BS	
	RG 50	1991	YB4L-B	
	50 RMX / SMX	1999	YB4L-B	
	Sepia 50	1997	YT4B-BS	
	Sport 50 (Model M12)	1968	6N4-2A	
	Street Magic 50	-	YT4B-BS	
	TR 50 S	1998	YT4B-BS	
	TS 50 ERK/K	1978	6N4B-2A	
	TS 50 J / TS 50 K	1974	6N4-2A	
	TS 50 L / TS 50 R	1974	6N4-2A	
	TS 50 R/W/XA/XK	1991	YB4L-B	
	TS 50 X	-	YT4L-BS	
	Tune 50	1997	YT4B-BS	
	UF 50 Estilete	2002	YT4L-BS	
	UR 50 (Velde)	2002	YT4B-BS	
	UX 50 W Zillion	1999	YT4L-BS	
	YR 50	2002	YT4B-BS	
	ZR 50 K / KE / SL / Shopper	1979	6N4B-2A	
	ZZ 50	1997	YT4L-BS	
	Model 31 55	1968	6N2-2A-4	
	75	TS 75 Colt	1975	6N4-2A
	80	A 80	1992	6N4-2A
		AH Adress Scooter 80	-	YTX5L-BS
		CP 80	1985	YB5L-B
		DG 80	1991	YB4L-B
		FB 80 D	1995	YTX5L-BS
FB 80 M		1991	YT4L-BS	
FR 80		1995	YT4L-BS	
PK 80S-CA		-	YB7-A	
GT 80 L/E/EX/LX		1981	6N4B-2A	
RG 80 Gamma C		1984	YB4L-B	
Sport 80 (Models K11 & K11P)		1968	6N4-2A	
Trail 80 (Models K15 & K15P)		1968	6N4-2A	
TS 80 ER		1991	6N4B-2A	
TS 80 X		1984	YB4L-B	
90		CS 90 G	1991	YB5L-B
		FB 90	2002	YT4L-BS
		RV 90 Vanvan / Rover	1992	6N4B-2A
	RV 90 Rover	1972	6N2-2A-4	
	TC 90	-	6N4-2A	
	TC 90 J / TC 90 R	-	6N2-2A-4	
	TS 90	-	6N4-2A	

CC	Model	Year	Battery	
90	TS 90 J / R	-	6N2-2A-4	
	Model K10 / Model K10P 90	1968	6N4-2A	
100	A 100 / Go-Fer	1991	6N4-2A	
	AG 100	2001	YTX5L-BS	
	AH 100 Adress	1995	YTX5L-BS	
	AX 100	1991	6N4-2A	
	B 100 P	1991	6N4-2A	
	FB 100	1991	YB5L-B	
	GP 100 V	1991	6N4-2A	
	GT 100	1992	6N4B-2A	
	SP 100	1983	6N4B-2A	
	Scrambler AC 100	1969	6N4-2A	
	Sport AS 100	1969	6N4-2A	
	TC 100 Blazer	1973	6N4-2A	
	TS 100 Honcho	1978	6N4B-2A	
	TS 100 Honcho	1973	6N4-2A	
	105	B 105 P	-	6N4-2A
	120	B 120 P	-	6N4-2A
		TC 120, TC 120-II, TC 120 R	1971	6N4B-2A
125	AN 125 (Vecstar)	1995	YTX7A-BS	
	AN 125 (Vecstar)	2002	YTX7A-BS	
	BURGMAN 125	-	YTX9-BS	
	DN 125	1991	YB7-A	
	DR 125 D/S	1982	YB4L-B	
	DR 125 R/SZ	1991	6N4-2A	
	DR 125 SE	1994	YTX7L-BS	
	DZ 125	2002	YTX7L-BS	
	GN 125 / E / U / Z	1982	YB7-A	
	GP 125 U	1978	6N4-2A	
	GS 125 ES	1992	YB7-A	
	GS 125 S	1999	YB7-A	
	GT 125 E/T/ET	1974	YB5L-B	
	GZ 125 Marauder	1998	YTX7L-BS	
	K 125	1991	YB10L-B	
	RG 125 Gamma	1985	YB5L-B	
	RG 125 Fun / Wolf	1992	YTX5L-BS	
	RV 125	1978	6N4-2A	
	RV 125	1979	6N4B-2A	
	RV 125 SE, R	1994	YTX7L-BS	
	RV 125 Tracker	1979	6N4-2A	
	RV 125 Tracker	2002	YTX7L-BS	
	SP 125	1986	6N4-2A	
	SP 125	1982	6N4B-2A	
	TC 125 Prospector	1973	6N4B-2A	
	TF 125	1991	6N4B-2A	
	TF 125	2002	6N4B-2A	
	TS 125 Duster / ER	1971	6N4B-2A	
	TS 125 R / SZ	1991	YT4L-BS	
	TS 125 R	1989	YT4L-BS	
	TS 125 X	1987	YB4L-B	
	TU 125 X classic	1999	YB7-A	
	UC 125 Epicuro	1999	YTX7A-BS	
RV 125 Van Van	1974	6N4B-2A		
RV 125 Van Van	2003	YTX7L-BS		
VL 125 LC Intruder	2000	YTX7L-BS		
150	AN 150	1998	YTX7A-BS	
	AN 150	2002	YTX7A-BS	
185	GT 185	-	YB10L-A2	
	GT 185 Adventurer	1973	6N2-2A-4	
	GT 185 E (El Starter)	1973	12N11-3A-1	
	TC 185 Ranger	1974	12N11-3A-1	
	TC 185 Sierra	1977	6N4B-2A	
	TC 185 Sierra	1971	6N4-2A	



# SUZUKI

CC	Model	Year	Battery		
185	TF 185	-	6N4B-2A		
	TS 185 ER	1979	6N4B-2A		
	TS 185 ER	2002	YT4L-BS		
200	DR 200 SE	1996	2002 YTX7L-BS		
	GT 200 N/EN	1979	-	YB7-A	
	RV 200	2002	-	YTX7L-BS	
	Scrambler TC 250	1969	-	YB5L-B	
	SP 250	1992	-	YB4L-B	
	SP 250	1982	1985	6N4B-2A	
	T 250, T 250-II, T 250 J, T 250 R	1972	-	YB5L-B	
	TS 250	1992	-	6N4B-2A	
	TS 250 Savage	1973	1981	6N4B-2A	
	TS 250 Savage	1969	1972	6N2-2A-4	
	TS 250 X / TS 240 X	1994	-	YB4L-B	
	SP 200	1986	1988	YB4L-B	
240	T 200 / TC 200	-	-	YB5L-B	
	TS 200 R / RM	-	-	YT4L-BS	
	RH 240	-	-	YB4L-B	
	AN 250 Burgman	1998	-	YTX7A-BS	
250	AN 250 Sky Wave	1998	-	YTX7A-BS	
	DR 250	2001	-	YTX5L-BS	
	DR 250 S	1987	-	YB4L-B	
	DR 250 S (Europe)	1990	1995	YT4L-BS	
	DR 250 S EP,ER,ES	1994	1995	YTX7L-BS	
	DR -Z 250	-	-	YTX5L-BS	
	GN 250 E	1982	1997	YB10L-A2	
	GNX 250 E	1985	1992	YB10L-A2	
	GSF 250	1995	-	YTX7A-BS	
	GS 250 T	1980	1981	YB10L-A2	
	GSX 250 E	1980	1981	YB10L-A2	
	GSX 250 ES / EZ	1982	1992	YB12B-B2	
	GSX 250 F / S	1991	1995	YTX7A-BS	
	GT 250	-	-	12N5-3B	
	GT 250 ET	1994	-	YB10L-A2	
	GT 250 Hustler / K / EN/ET/EX	1981	-	YB5L-B	
	GZ 250 Marauder	1999	2001	YTX7L-BS	
	Intruder LC 250	2002	-	YTX7L-BS	
	Model T 20 250	1969	-	YB5L-B	
	RG 250 C/E/FC Gamma	1992	-	YB5L-B	
	RGV 250	1991	1995	YT4L-BS	
	RH 250	-	-	YB4L-B	
	TU 250 X Volti	1997	2001	YB10L-A2	
	VL 250	2002	-	YTX7L-BS	
	Glass stocker/Big Boy/Volty	2002	-	YB10L-A2	
	300	GS 300 L	1985	-	YB12B-B2
		Scrambler TC 305	1969	-	YB5L-B
305	T 305	1969	-	YB5L-B	
	DR 350 L,M,N,P,R,S	1995	-	YT4L-BS	
350	DR 350 S,SH	1991	1999	YT4L-BS	
	DR 350 SL,SM,SE	1994	1999	YTX7L-BS	
	T 350 Series -1, -2 / J / R	1979	-	YB5L-B	
	SP 370	1977	1980	6N4B-2A	
380	GT 380	1972	1979	YB7-A	
	AN 400 Burgman	1999	2002	YTX9-BS	
400	AN 400 Burgman	2003	-	YT12A-BS	
	DR 400 S	1992	-	6N4B-2A	
	DR -Z 400, E, SM	2000	2006	YT7B-BS	
	GN 400 L/T/TD/X	1980	1992	6N4B-2A	
	GS 400	1977	1979	YB10L-A2	
	GS 400 E	1991	-	YTX9-BS	
	GS 400 T	-	-	YB10L-A2	
	GS 400 X	1977	1978	YB7-A	
	GS 400 X	1991	1995	YTX9-BS	

CC	Model	Year	Battery		
400	GSF 400 Bandit	1991	1995	YTX9-BS	
	GSX 400 E / FE / FX / L / T / S	1980	1981	YB10L-A2	
	GSX 400 E / T / S / ES	1983	1992	YB12B-B2	
	GSX 400 FS Inazuma	2002	-	YTX7A-BS	
	GSX-R 400 R / RF	1991	1995	YTX9-BS	
	GSX 400 T / S / ES / Four	1982	1993	YB10L-A2	
	SP 400	1980	1992	6N4B-2A	
	TS 400	-	-	12N5-3B	
	TS 400 Apache	1976	1977	6N4B-2A	
	TS 400 Apache (EI Starter)	1972	1975	YB5L-B	
	TS 400 T	1992	-	YB10L-A2	
	VZ 400	2002	-	YTX7A-BS	
	425	GS 425 / GS 425 E, L	1979	-	YB10L-A2
		GS 450 E	1980	1982	YB10L-A2
	450	GS 450 E	1983	-	YB12B-B2
		GS 450 GA	1982	1983	YB12B-B2
GS 450 L		1980	1982	YB10L-A2	
GS 450 L		1983	1987	YB12B-B2	
GS 450 S		1988	-	YB10L-A2	
GS 450 T / TU		1981	1982	YB10L-A2	
GS 450 TX		1982	-	YB10L-A2	
GS 450 TX		1983	-	YB12B-B2	
DR 500 S		1981	1982	6N4B-2A	
DR 500 S		1992	-	YB4L-B	
500	DR 500 XZD	1981	1983	YT4L-BS	
	GS 500	2001	-	YB10L-B2	
	GS 500 E	1979	-	YB10L-A2	
	GS 500 E / EU	1989	2006	YB10L-B2	
	GS 500 EN	2002	-	YB10L-B2	
	GS 500 F K4	2004	-	YB10L-B2	
	GT 500 A / B	1975	-	YB10L-A2	
	GT 500 Titan	1976	1977	YB7-A	
	RG 500 Gamma	1998	-	YTX5L-BS	
	SP 500	1981	1983	6N4B-2A	
	SP 500	1992	-	YB4L-B	
	T 500 Titan	1992	-	YB7-A	
	550	GS 550 B/C/D/E/EG/L/M/T/ Katana	1977	1982	YB10L-A2
		GS 550 ES/E/L	1983	1986	YB10L-B2
GSX 550 ES/EF/EV/L		1992	-	YB10L-B2	
GT 550 A/B/K/L/M/Indy		1973	1977	12N11-3A-1	
GT 550 J/K/L/M		1992	-	YB10L-A2	
600	DR 600 S/R/SU/RU	1985	1989	YB5L-B	
	GSF 600 S/SU/U/U II / Bandit	1995	2002	YTX9-BS	
	GSX 600 F Katana	1988	1997	YB10L-B2	
	GSX 600 F Katana	1998	2002	YTX9-BS	
	GSF 600 S Bandit	1996	2004	YTX9-BS	
	GSX -R 600	1997	2005	YTX9-BS	
	GSX -R 600 V/W	1997	-	YTX12-BS	
	GSX-R 600 V/W	2001	2005	YTX9-BS	
	RF 600 R, S	1993	1998	YTX9-BS	
	SP 600	1985	-	YB5L-B	
	VS 600	-	-	YTX16-BS	
650	VS 600 GLF	1995	-	YB16B-A	
	AN 650 / Burgman	2004	-	YTX14-BS	
	DR 650 S, N, P	1992	1993	YT4L-BS	
	DR 650 S, ER, ES	1994	1995	YTX12-BS	
	DR 650 S/R/RS/N	1999	-	12N5-3B	
	DR 650 SE	1997	2003	YTX9-BS	
	DR 650	1991	1994	YTX14-BS	
	DR 650 Djebel	1992	-	YT4L-BS	
	DR-RSE 650	1991	1996	YTX12-BS	
	DR-SET 650	-	-	YTX14-BS	

# SUZUKI

CC	Model	Year	Battery	
650	GR 650 D/XD/E/XE	-	-	YB14L-A2
	GR 650 Tempter, X	1983	-	YB14L-A2
	GS 650 (All)	1981	1983	YB14L-A2
	GS 650 E	1981	1982	YB10L-A2
	GS 650 EX/G/M/	-	-	YB14L-A3
	GS 650 Katana EX	1983	-	YB10L-A2
	GSF 650 Bandit	2005	2006	YTX9-BS
	LS 650 F/P/Savage	1986	2003	YB14L-B2
	SV 650 / S / N	1999	2006	YT12A-BS
	SV650 S	2003	2006	YTX12-BS
	DL V-Strom 650	2004	2006	YTX12-BS
	XF 650 Freewind	1997	2002	YTX9-BS
700	GS 700 E, ES	1985	-	YB14L-A2
	GV 700 GL Madura	1985	-	YB14L-B2
	VS 700 GL Intruder	1985	1987	YB16B-A1
750	DR 750 S, SU Big	1988	1989	YB14L-B2
	GS 750, D, E, ES, L, S, T	1977	1979	YB14L-A2
	GSX 750, E, EF, ES, L	1980	1986	YB14L-A2
	GSX 750 EG Silver Suzi	1980	-	YB14L-A2
	GSX 750 Inazuma	1999	2002	YTX9-BS
	GSX 750 F	1998	1999	YTX9-BS
	GSX 750 F Katana	1989	1997	YB14L-B2
	GSX 750 F	2004	2006	YTX9-BS
	GSX 750 S Katana	1982	-	YB14L-A2
	GSX-R 750	1985	1991	YB14L-A2
	GSX-R 750	2000	2003	YT12A-BS
	GSX-R 750 W	1992	1993	YTX12-BS
	GSX-R 750 W	1996	1999	YTX9-BS
	GSX-R 750 W	2000	2005	YTX12A-BS
	GSX-R 750 W	2006	-	YTX12A-BS
GT 750 Le Mans	1973	1977	YB14L-A2	
VS 750 GL Intruder	1986	1991	YB16B-A1	
800	DR 800 S, SU Big	1991	1993	YTX14-BS
	DR 800 ST	1990	-	YB14L-B2
	VL800 Intruder Volusia	2001	2003	YTX12-BS
	VS 800 GL Intruder	1992	2003	YB16B-A1
	VX 800 U	1990	1997	YB16B-A1
	VZ 800 Marauder	1997	2004	YTX12-BS

CC	Model	Year	Battery	
850	GS 850 G, GL	1979	1986	YB14L-A2
	X1-E 850	1992	-	6N4-2A
900	RF 900 R-S-ZS	1994	1998	YTX9-BS
	DL V-Strom 1000	2002	2006	YTX14-BS
1000	GS 1000 E, G, GL, H, L, S	1978	1981	YB14L-A2
	GSX-R 1000	2001	2005	YTX12-BS
	GSX-R 1000	2006	-	YTX12A-BS
	TL 1000 R	1998	2003	YT9-B4
	TL 1000 S	1997	2001	YTX12-BS
	SV 1000 S / N	2003	2005	YTX14-BS
	DL 1000V-Strom	2004	2005	YTX14-BS
	GS 1100 E, ES	1980	1983	SYB14L-A2
	GS 1100 E, EF, ES, EX	1980	1986	SYB14L-A2
	GS GSX 1100 G	1991	1993	YTX14-BS
1100	GS 1100 G Katana	1984	1986	YB14L-A2
	GSX 1100 F Katana	1988	1993	YB14L-B2
	GSX 1100 G	1991	-	YTX14-BS
	GSX 1100 L	1980	-	SYB14L-A2
	GSX 1100 S Katana	1982	-	SYB14L-A2
	GSX-R 1100	1986	1992	YB14L-A2
	GSX-R 1100 W	1993	1999	YTX12-BS
	GS 1150 E, ES	1983	1986	SYB14L-A2
1200	Bandit 1200 S	2002	-	YTX12-BS
	GS 1200 SS	2002	-	YTX12-BS
	GSF 1200, S SA Bandit	1996	2006	YTX12-BS
	GSX 1200 Inazuma	1999	-	YTX12-BS
1250	GV 1200 GL Marauder/Madura	1985	1986	YB14L-B2
	Bandit 1250 S / N	2007	-	YTX12-BS
1400	GSX 1300 R Hayabusa	1999	2003	YT12A-BS
	GSX 1400	-	-	YTX14-BS
1500	GV 1400 GC Cavalcade	1986	1988	SY50-N18L-AT
	VS 1400 GLF / GLP / Intruder	1987	1999	YTX16-BS-1
1600	VL 1500 Intruder	-	-	YTX16-BS-1
1600	Marauder 1600	2004	-	YTX20-BS
1800	VZR 1800	-	2006	YTX20-BS

# YAMAHA

CC	Model	Year	Battery	
50	Aerox 50	1997	-	YB4L-B
	BA 50 S, N, C		2006	YTX4L-BS
	BW's 50 Bump, Spy, New Généra.	1995	-	YB4L-B
	BW's 50 Original	2000	-	YB4L-B
	CE 50 S Riva	1986	1987	YB4L-B
	CG 50	1988	1991	YB4L-B
	CR 50 Z	1989	1993	YB4L-B
	CW 50 RS, RSX, BW's	1991	1997	YB4L-B
	CW 50 Zuma	1989	1990	YB4L-B
	CW 50 Zuma II	1997	2001	YB4L-B
	CW 50 RSP NG	1996	1997	YB4L-B
	CY 50 B, D, E, G, R, Z	1989	1995	YT4L-BS
	CY 50 Riva Jog	1992	2001	YT4L-BS
	DT 50 Enduro	1988	1990	6N4B-2A-3
	DT 50 M	1978	1981	6N4A-4D
	DT 50 MX	1981	-	6N4B-2A-3
DTR 50 Japan / Italy	1989	1997	YB3L-A	

CC	Model	Year	Battery	
50	DT 50 Super motard	2002	-	YB3L-A
	FS1 DX 50	1975	1979	6N4A-4D
	LB II M 50 Chappy	-	-	6N4-2A-4
	LB 50 P Chappy	1978	1982	6N4-2A-5
	LC 50 Champ / Bop	1980	1981	6N4-2A-5
	MJ 50 Towny	1982	-	6N4-2A-5
	Neo's 50	1997	-	YB4L-B
	QT 50 Yamahopper	1979	1987	6N4-2A-5
	RD 50 DX, M (Spooks / Bâtons)	1978	1981	6N4A-4D
	RD 50 MX	1981	-	6N4B-2A-3
	RX 50 Special	1983	1984	6N4-2A-5
	SG 50 Sting	1984	-	YB2,5L-C
	SH 50 E, D, M Riva	1987	1994	YB4L-B
	SH 50 Riva Razz	1987	2001	YB4L-B
	TY 50 M	1978	-	6N4A-4D
	TZR 50	1997	-	YT4L-BS
	V 50 D	1993	-	YB2,5L-C-4

# YAMAHA

CC	Model	Year	Battery		
50	XC50 D	2004	-	YTX5L-BS	
	YA 50 R Axis	1996	-	YT4L-BS	
	YA 50 T	1993	-	YT4L-BS	
	YB 50	1998	-	YT4B-BS	
	YE 50 Zest	1993	1997	YB4L-BS	
	YJ 50 R Vino/Vino Classic	25-Jun	-	YT4L-BS	
	YM 50 Breeze	1995	1996	YB4L-B	
	YSR 50	1987	1992	6N4-2A-5	
	YW 50 A Zuma	2003	-	YTX5L-BS	
	YZ 50 D, ZS	-	-	YT4B-BS	
	Why 50	1999	-	YB4L-B	
60	JT2 Mini Enduro 60	1972	-	6N2-2A-3	
	RD 60	1973	1975	6N4-2A-5	
65	CW 65	1994	-	YB4L-B	
80	CV 80 Beluga	-	-	YB4L-B	
	CV 80 Riva	1983	1987	6N11-2D	
	DT 80 LC/LCII	1983	1996	YB3L-B	
	DT 80 Mini Enduro	1981	1983	6N4-2A-5	
	DT 80 MX, MX-S	1981	1987	6N4B-2A-3	
	FS 1 80 DX	1980	-	6N4A-4D	
	FS 80 SE	1981	-	6N4A-4D	
	G6S / G6SB 80	1970	1971	6N4A-4D	
	G7S 80	1972	-	6N4A-4D	
	GT1 Mini Enduro 80	1973	-	6N4-2A-5	
	GT 80 Mini Enduro	1974	1980	6N4-2A-5	
	LB 80 2A	1995	-	6N4-2A-5	
	LB 80 Chappy	1976	1978	6N4-2A-5	
	RD 80 LC	1982	-	6N4A-4D	
	RD 80 LC II	1982	1986	YB3L-B	
	RD 80 MX	1981	1982	6N4B-2A-3	
	RX 80 SE	1982	-	6N4-2A-4	
	SV 80	1988	1990	YB7L-B2	
	TZR 80 D	1991	-	YT4L-BS	
	V 80 D	1993	1994	6N4-2A-9	
	YE 80 Zesyt	1994	1996	YB4L-B	
	YG5T / YG5S 80	1968	1969	YB7L-B	
	YSR 80 B, D	1992	-	6N4-2A-5	
	90	CR 90	1991	-	YB4L-B
		HS1 / HS1B 90	1970	1971	12N5,5-3B
		HT1 / HT1B 90 Enduro	1970	1971	6N2-2A-3
		YA 90	1993	-	YT4L-BS
Aerox / Neo's 100		2000	-	YT4L-BS	
100	TTR90E	2004	-	YT4B-BS	
	Aerox 100	2000	-	YTX4L-BS	
	AG 100 E	1993	-	6N4-2A-5	
	BW's 100	1999	-	YX5L-BS	
	DT 100 Enduro	1977	1983	6N4-2A-5	
	DT 100 Enduro	1974	1976	6N4B-2A-3	
	L5T / L5TA 100	1969	1970	12N7-3B	
	LS2 100	1972	-	12N5,5A-3B	
	LT2 / LT3 100 Enduro	1972	1973	6N4A-4D	
	RS 100	1975	1976	6N4A-4D	
	RS 100 DX	1979	1981	6N4-2A-4	
	RS 100 T / RXZ 100 S	1995	-	6N4A-4D	
	V 100	1993	1994	YB3L-B	
	V 100 E	1993	1994	YB5L-B	
	YFA-1 Breeze	1989	1995	YB12C-A	
	YT 100 (Taiwan)	1999	-	YTX5L-BS	
	YT100 L2C/CM	1968	-	12N7-3B	
110	V 110 E	1993	1995	YB5L-B	
115	RT / RTX 115	1993	-	6N4-2A-5	

CC	Model	Year	Battery		
125	AS2C 125	1969	-	12N5,5-3B	
	AT1E,AT1B,AT1C 125 End	1969	1971	12N7-3B	
	AT2, AT3 125 Enduro	1972	1973	12N7-3B	
	BL 125 Beluga	1985	-	YB7C-A	
	CV50A R ZR	2004	-	YTX4L-BS	
	Cygnus 125	-	-	YTX7A-BS	
	DT 125	1974	-	6N4B-2A-3	
	DT 125 Enduro	1974	1981	YB7L-B	
	DT 125 LC / MX	1979	1984	6N6-3B-1	
	DT 125 LC / R	1985	-	YB3L-B	
	DT 125 R Electric	1989	-	12N5,5-4B	
	DT 125 ténééré / Belgarda	1988	1992	YB3L-B	
	DTR 125	1991	-	YB3L-B	
	Maxster 125	2000	-	YB7L-B2	
	NXC 125	2004	-	YTX7A-BS	
	RD 125 DX	1975	1981	12N5,5-3B	
	RD 125 LC	1982	-	YB5L-B	
	RX 125	1995	-	6N4B-2A	
	SR 125	1993	1999	YB7L-B	
	SV 125	1990	-	YB14L-A2	
	TDR 125 Belgarda	1993	-	12N5,5-4B	
	TDR 125 R / Deltabox	1993	-	YTX5L-BS	
	TTR E, S LES ,LWE 125	2004	-	YTX4L-BS	
	TW 125	1998	2003	YB7C-A	
	TW 125	2004	-	YTZ7S	
	TY 125	1980	-	6N4B-2A	
	TZR 125 R	1987	-	YB5L-B	
	TZR 125 RR Italy	1992	1993	12N5,5-3B	
	TZR 125 R Japan	1994	1999	12N5,5-4B	
	XC 125 Beluga / Riva	1986	1992	YB7C-A	
	XC 125 R,T,TR Cygnus	1996	2004	YTX7A-BS	
	XC 125 TR Cygnus R	2000	-	YB7C-A	
	XT 125	1982	1983	6N4A-4D	
	XT 125 Latest Model	-	-	YTX7L-BS	
	XTX / R 125	2005	-	GT6-B3	
	XV 125	1997	-	YB10L-A2	
	XV 125 S Virago	1999	-	YB10L-A2	
	XVS 125 Drag Star	2000	2004	YTZ7S	
	YASC/1 125	1968	-	12N5,5A-3B	
	YBR 125	2005	-	YB5L-B	
	YP 125 R Majesty	1998	-	YB7L-B2	
	150	SR 150	1993	1995	YB7-A2
		RX 150	1995	-	YB3L-B
		YP 150	2001	-	YB7L-BS
	175	CT1,CT1B,CT1C 175 Enduro	1969	1971	6N2-2A-3
		CT2,CT 3 175 Enduro	1972	1973	6N4B-2A-3
		DT 175 Enduro	1974	1976	6N4B-2A-3
DT 175 Enduro		1978	1981	6N6-3B-1	
DT 175 MX		-	-	6N6-3B-1	
TY 175		1975	-	6N4B-2A	
180	RT 180 G	1995	-	6N6-3B-1	
	XC 180 D, Z, Riva	1983	1985	YB10L-B	
185	XC 180 Cygnus	1993	-	YB10L-A2	
	SR 185	1981	1982	YB7L-B	
200	AG 200 E, G	1993	1995	6N4B-2A	
	BW 200	1986	1988	YB7C-A	
	CS3B, CS3C 200	1970	1971	YB9L-A2	
	CS5 200	1972	-	YB9L-A2	
	DT 200 RE	1993	-	YB3L-B	
	IT 200	-	-	6N2-2A-4	
	RD 200	1974	1976	YB9L-A2	
	RD 200 DX	-	-	YB9-B	
	TW 200 Trailway	1987	2003	YB7C-A	

# YAMAHA

CC	Model	Year		Battery
200	XC 200 Z Riva	1987	1991	YB7C-A
	XT 200	1982	1983	6N4A-4D
	YCS1 200	1968	-	YB9L-A2
	YFS 200 Blaster	1989	2001	YB14A-A1
225	TTR 225	1999	2003	YB7B-BS
	XT 225	2001	2003	YTZ7S
	XT 225 E, EC, F, FG, G, GC	1993	-	YTX7L-BS
240	XT 225 Serow	1992	2000	YTX7L-BS
	TDR 240	-	-	YB5L-B
250	XV 240	-	-	YB10L-A2
	DS6B, DS6C 250	1969	1970	YB5L-B
	DS7	1972	-	12N5,5A-3B
	DT 250	1974	1976	6N4B-2A-3
	DT 250 Enduro	1977	1979	6N6-3B-1
	DT1 250 Enduro	1968	-	6N2-2A-3
	DT 250 MX	1977	1981	6N6-3B-1
	DT3 250 Enduro	1973	-	6N4-2A-5
	RD 250 S	1975	1979	12N5,5A-3B
	RD 250 LC	1980	1982	12N5,5-3B
	SR 250 SE	1980	1983	YB12A-A
	SRV 250 G	1993	-	YTX7A-BS
	SRX 250	1987	-	YB12A-A
	TDR 250	1988	1992	YB5L-B
	TT 250	1999	2003	YT7B-BS
	TZR 250	1988	1990	YB5L-B
	WR 250 F	2001	-	YTX5L-BS
	XS 250	1977	1980	YB12A-A
	XT 250	1980	1983	6N6-3B-1
	XT 250	1984	-	YB3L-B
XV 250 Route 66	1988	1990	YB10L-A2	
XV 250 H Virago	1995	2003	YB10L-A2	
XV 250 N, L, S Virago	1989	-	YB10L-A2	
XVS250 S	2004	-	YTZ7S	
YP 250 DX/ABS Majesty	1996	2003	YT7B-BS	
YP 250 L,C	2004	-	YT9B-4	
300	VP VERSITY	2003	-	YTX9-BS
350	BW 350	1987	1988	YB12B-B2
	BW 350 E	1986	1988	YB7C-A
	R5, R5B, R5C 350	1970	1972	12N5,5A-3B
	RD 350	1973	1975	12N5,5A-3B
	RD 350 LC, LCF	1980	1985	12N5,5-3B
	RD 350 LC-FH, FN, H, N	1986	1990	YB5L-B
	RZ 350	1984	1985	12N5,5-3B
	TT 350 E, F	1993	1994	6N2-2A
	XT 350 H, N	1985	2000	YB3L-B
	YR2/C 350	1968	-	12N5,5-3B
	YFM 350 X Warrior	1987	-	YB12C-A
	YFZ 350 X Banshee	1989	-	YB14A-A1
	360	DT 360 Enduro	1974	-
RT1, RT1B 360 Enduro		1970	1971	6N2-2A-3
RT2, RT3 360 Enduro		1972	1973	6N4-2A-5
XS 360		1976	1978	YB12A-A
XS 360 -2		1977	-	12N7-3B
400	DT 400 Enduro	1975	1976	6N4B-2A-3
	DT 400 Enduro	1977	1978	6N6-3B-1
	FZR 400 S	1988	1990	YB12AL-A2
	FZR 400 RR, RRSP, Exup	1990	-	YTX9-BS
	RD 400 S	1976	1979	12N5,5A-3B
	SR 400	-	-	YT4B-BS
	XS 400 Maxim	1977	1983	YB12A-A
	XS 400 S Heritage Special / 400-2	1978	1982	YB12A-A
	XT 400	1981	1982	6N6-3B-1

CC	Model	Year		Battery	
400	XVS 400,C	2004	-	YB12B-BS	
	YP 400, Majesty	2004	-	YT9B-4	
	XJR400R	2004	-	YTX9-BS	
	XT 400	1983	-	12N14-3A	
450	XV 400	1995	-	YB12AL-A	
	WR 450 F	2003	-	YTZ7S	
500	FXR 500	1993	-	YB12AL-A2	
	RD 500 LC	1984	1985	12N5,5-3B	
	SR 500 SP	1978	-	YB7L-B2	
	SR 500	1998	-	YT4B-BS	
	T-MAX 500 XP	2000	2004	YT9-B4	
	TT 500	-	-	6N6-3B-1	
	TX 500	1973	1974	YB14L-A2	
	XP 500, A	2001	2005	YT9B-4	
	XS 500	1975	1978	YB14L-A2	
	XT 500	1976	1981	6N6-3B-1	
535	XT 500	1986	1989	YB3L-B	
	XT 500 E	1993	-	YTX9-BS	
	XV 500 Virago 83	1983	-	YB12A-A	
	XV 535 H, N, S, SE Virago	1988	-	YB12AL-A2	
	XV 535 DX Virago	1999	-	YB12AL-A2	
	550	XJ 550 /Maxim/R Seca	1981	1983	YB12A-A
		XT 550	1982	1983	YB5L-B
	600	XZ 550 R	1982	1983	YB14L-A2
		FJ 600	1984	1985	YB12A-A
		FZ 600	1986	1988	YB12A-A
FZ6 N, NV, NS		2004	2006	YT12B-4	
FZR 600		1989	1990	YB12AL-A	
FZR 600 R / E / ER		1989	1993	YB12AL-A2	
FZR 600 /R		1994	1995	YTX12-BS	
FZS 600 Fazer		1999	2003	YT12B-4	
FZ6 S, SC		2004	2005	YT12B-4	
SRX 600 H, N		1986	1990	YB5L-B	
TT 600 Japan		1983	1992	6N4-2A-7	
TT 600 S Italy		1993	1995	YT4L-BS	
TT 600 S Italy		1996	-	YTX9-BS	
TTR 600		1993	-	YT4L-BS	
TTE 600		1997	-	YTX9-BS	
TT600RE		2004	-	YT9B-4	
XJ 600 H, N		1984	1991	YB12A-A	
XJ 600 N / S / Diversion Seca II		1992	-	YTX9-BS	
XT 600 E, EH, EN		1990	-	YTX9-BS	
XT 600 E, EH, EN, H, N, Z		1983	1985	YB5L-B	
XT 600 KH	1991	1995	YT4L-BS		
XT 600 Z Démar. Elec. + G	1986	1990	YB12A-A		
XT 600 Z Démar. Elec. + D	1986	1990	YB12AL-A		
XTZ 600 Ténéré	1983	1985	YB5L-B		
XTZ 600 Ténéré	1986	1989	YB12AL-A2		
YFV 600 Grizzly	1998	2001	YTX20L-BS		
YX 600 Radian	1986	1990	YB12A-A		
YZF 600 FGC, RG	1995	-	YTX12-BS		
YZF 600 R Thunder Cat	1996	-	YTX12-BS		
YZF-R6 600	1999	2000	YT12B-4		
YZF-R6 600	-	2006	YTZ10S		
YZF-R6 600	2001	2005	YT9-B4		
650	Burgman	-	-	YTX14-BS	
	TX 650	1974	-	YB14L-A2	
	TX 650	1973	-	YB12A-A	
	XJ 650 Seca	1980	-	12N12A-4A-1	
	XJ 650 T Turbo	1981	1983	YB12A-A	
	XS1 650	1970	1971	12N5,5-3B	
	XS2 650	1972	-	YB12A-A	
	XS 650	1975	1983	YB14L-A2	

# YAMAHA

CC	Model	Year	Battery	
650	XS 650-2	1979	-	YB14L-A2
	XS 650 S Heritage Special	1978	1983	YB14L-A2
	XVS 650 Drag Star	1997	-	YT12B-4
	XVS 650 A Drag Star Cla.	2000	-	YT12B-4
	XVS650 V-Star	1998	2003	YT12B-4
660	MT03	2006	-	YT9-B4
	SZR 660	1995	-	YTX9-BS
	XT660 R	2004	-	YT9-B4
	XTZ 660 Ténére	1990	-	YTX9-BS
700	YFM 660 Raptor	2001	-	YTX14-BS
	FZ 700	1987	-	YB14L-A2
	FZX 700 Fazer	1986	1987	YB14L-A2
	XJ 700 Maxim	1985	1986	YB14L-A2
	XJ 700 X	1986	-	YB14L-A2
	XV 700 Virago	1984	1987	YB16AL-A2
	XV 700 C	1986	1987	YB16AL-A2
	XV 700 S	1986	-	YB16AL-A2
750	FX 750	1992	-	YB14L-A2
	FZ 750 Genesis	1985	1994	YB14L-A2
	FZR 750	1988	1990	YB14L-A2
	FZR 750	1991	-	YTX9-BS
	FZR 750 RT Genesis	1988	-	YB14L-A2
	FZX 750 Fazer	1987	1989	YB14L-A2
	XJ 750 Maxim	1982	1983	YB14L-A2
	XJ 750 M Midnight Virago	1983	-	YB14L-A2
	XT 750	1973	1974	YB16L-B
	XJ 750 Seca	1981	1983	YB14L-A2
	XS 750 S, SE	1977	1979	YB14L-A2
	XS 750-2	1977	-	YB14L-A2
	XTZ 750 H, N Super Ténére	1989	1998	YB14L-A1
	XV 750 SE / Virago	1981	-	YB16AL-A2
	YZF 750 R, SP	1993	1998	YTX12-BS
	YZF 750 R7	1999	-	YT9 B-4
	850	TDM 850	1992	1995
TDM 850, N		1996	2001	YT12B-4
TRX 850		1996	1999	YTX12-BS
XS 850 (All)		1980	1981	YB14L-A2
TDM 900		2002	2005	YT12B-4
900	XJ 900 F	1983	1994	YB14L-A2
	XJ 900 R Seca	1983	1992	YB14L-A2
	XJ 900 S Diversion	1995	2002	YTX14-BS
920	XV 920 Virago	1983	-	Y50-N18L-A
	XV 920 M Midnight Virago	1983	-	Y50-N18L-A
	XV 920 R Virago	1981	1983	Y50-N18L-A

CC	Model	Year	Battery		
1000	FZ1 1000	2006	-	YTZ14S	
	FZS 1000	2004	-	YT14B-4	
	FZR 1000 Genesis	1987	1988	YB14L-A2	
	FZR 1000 GTS	1993	1994	YTX14-BS	
	FZR 1000 Exup	1989	1990	YB14L-A2	
	FZR 1000 Europ / Exup	1992	1995	YTX14-BS	
	FZS 1000 Fazer	2001	-	YT12B-4	
	FZS 1000 S / Fazer	2001	2003	YT14B-4	
	GTS 1000 ABS	1993	-	YTX14-BS	
	XV 1000 TR1	1992	-	Y50-N18L-A	
	XV 1000 SE Midnight Sp.	1983	-	SY50-N18L-AT	
	XV 1000 SE Virago	1986	1988	SY50-N18L-AT	
	YZF 1000 R Thunder Ace	1996	-	YTX14-BS	
	YZF-R1 1000	1999	2003	YT12-B4	
	YZF R1	2004	2005	YTZ10S	
	1100	BT 1100 Bulldog	2002	-	YT14B-4
		FJ 1100	1984	1992	YB14L-A2
XJ 1100 Maxim		1982	-	SY50-N18L-AT	
XS 1100 /S		1978	1992	Y50-N18L-A	
XS 1100 L		1980	1981	Y50-N18L-A	
XV 1100		1986	1999	Y50-N18L-A	
XV 1100 Virago		1986	-	Y50-N18L-A	
XV 1100 G, GC		1995	-	Y50-N18L-A	
XV 1100 Classic		2000	-	YT14B-4	
XVS 1100 V-Star		1999	2004	YT14B-4	
1200	XVS 1100 A Drag Star	2001	2004	YT14B-4	
	FJ 1200	1986	1990	YB14L-A2	
	FJ 1200 ABS	1991	1994	YTX14-BS	
	V-MAX 1200	1985	2002	YB16AL-A2	
	XJR 1200 SP	1995	1998	YTX14-BS	
	XVZ12 1200 Venture Royale	1983	1985	SY50-N18L-AT	
1300	FJR 1300	2001	2004	YT14-B4	
	XJR 1300 SP	1999	2004	YT14-B4	
	XVZ 13 1300 Venture Royale	1986	1995	SY50-N18L-AT	
	XVZ 13 TD	-	-	SY50-N18L-AT	
	XVZ 13 AT Royal Star	2000	-	YTX20L-BS	
	XVZ 1300 AT Tour Classic	1999	-	YTX20L-BS	
1600	XV 1600 Road Star	1999	2003	YTX20L-BS	
	XV 1600 A Wild Star	2000	-	YTX20L-BS	
1700	XV 1700 Road Star Warrior	2002	-	YT14B-4	
	MT-01	2005	-	YT14-B4	

# DIVERS

CC	Model	Year	Battery	
<b>APRILIA</b>				
50	AF1 50 Futura/Euorpa	1987	1994	YB4L-B
	Amico GL/LK/LX/Sport	1992	1997	YB4L-B
	AREA 51	2000	-	YB4L-B
	Classic 50	1997	-	YB4L-B
	ET 50	-	-	YB4L-B
	Gulliver AC/LC	1997	-	YB4L-B
	Habana, Custom 50	1999	-	YB4L-B
	H2O 50	2000	-	YB4L-B
	LC 50	-	-	YB4L-B
	Mc Gulliver 50	2000	-	YB4L-B
	Pegaso 50	2000	-	YB4L-B
	Rally AC/LC	1997	-	YB4L-B
	Red Rose/ Classic 50	1997	-	YB4L-B

CC	Model	Year	Battery	
<b>APRILIA</b>				
50	Replica	2000	-	YB4L-B
	RS 50/Extrema / RX-50	2002	-	YB4L-B
	Scarabeo 50	1998	-	YB4L-B
	SR 50 (00-01)	2000	2001	YB4L-B
	SR 50 Ditech	2001	2002	YTX5L-BS
	SR 50 LC/Netscaper	1997	-	YB4L-B
	SR 50 Netscaper	2000	-	YB4L-B
	SR 50 Replica/Racing	1997	-	YB4L-B
	SR 50 Stealth/WWW/Tuareg/Wind	1997	-	YB4L-B
	SR 50 Urban/Viper	-	-	YB4L-B
100	Tuono 50	2004	-	
	Scarabeo 100	2000	-	YTX5L-BS

# DIVERS

CC	Model	Year	Battery
<b>APRILIA</b>			
50	Tuono 50	2004	-
	Scarabeo 100	2000	-
100	Scarabeo 4T	2000	-
	Scarabeo 4T	2002	2003
125	AF1 125 Futura/Europa	1994	-
	AF1 125 Project108/Replica	1994	-
	AF1 125 Sintesi/Sport Pro	1994	-
	AS R 125	-	-
	Atlantic 125/200	2004	-
	Classic 125	-	-
	ETX 125 E-Starter	1999	-
	ETX 125 Kick Starter	-	-
	Habane, Custom 125	2000	-
	Leonardo 125	1996	-
	Mx 125 sm	2004	-
	Pegaso 125	1995	-
	Red Rose/Classic 125	1997	-
	RS 125 Extrema, RX	1997	-
	RS 125 Replica	1993	-
	RS 125	1999	2003
	Scarabeo 125	1999	-
	SR 125	1999	-
	ST, STX 125 E-Starter	-	-
	ST; STX 125 Kick Starter	-	-
Tuareg 125 E-Starter	-	-	
Tuareg 125 Kick Starter	-	-	
Tuareg 125 Rally	1986	-	
Tuareg 125 Rally/Wind	1987	1994	
Tuono 125	2004	-	
150	Leonardo 150	1996	1998
	Leonardo 150	1999	-
200	Scarabeo 150	1999	-
	SR 150	1999	-
250	Scarabeo 200	2000	-
	AF1 250 Replica / RS 95	-	-
	ETX 250 E-Starter	-	-
	ETX 250 Kick Starter	-	-
	Leonardo 250	1999	-
	RS 250	1998	-
350	RS 250 Replica	-	-
	ETX 350 E-Starter.	-	-
	ETX 350 Kick-Starter	-	-
500	350 Tuareg Wind	1988	1994
	Atlantic GT / LIGHT	2003	-
600	Scarabeo	2004	-
	ETX 600 E-Starter	-	-
	ETX 600 Kick-Starter	-	-
	600 Pegaso	1988	1994
650	Tuareg Wind 600	1987	1991
	ETX 650 E-Starter	-	-
	ETX 650 Kick-Starter	-	-
1000	Moto' 6.5	-	-
	650 Pegaso	1992	1997
	6.5 Starck	2000	-
1000	ETV 1000 Capo Nord	2001	-
	RST 1000 Futura	2001	-
	RSV 1000 SP, R, SL	2000	-
	RSV 1000 SP, R, SL	2001	2004
	RSV / SL 1000 Falco	2000	2003
TUONO Fighter	2003	-	

CC	Model	Year	Battery
<b>BENELLI</b>			
50	Devil E-Starter 50	1994	1995
	KBX 50 Race	1994	-
	K2 50	1997	-
	Pepe 50	2000	-
	Scooty 50 LX/DLX	1994	-
	491GT/Sport 50	1997	-
80	Devil 80	1994	1995
	KBX 80	1994	-
100	K2 100	2000	-
125	Adiva 125	2000	-
	125 / 250	-	-
	Cross 125	-	-
	125 -2 CSE	-	-
	125 CS	-	-
	Custom Guzzi 125	-	-
	Guzzi 125	-	-
	Jarno 125 E-Starter	2000	-
150	125 Scooter Benelli	-	-
	125 T Sport	-	-
	Velvet 125	1999	-
	Adiva 150	2000	-
250	Velvet 150	1999	-
	250 (4 cylinder)	-	-
254	250 -2 C	-	-
	Velvet 250	1999	-
350	254 4 cyl.	-	-
350	350RS	2000	-
354	354 4 cyl.	-	-
500	LS 500	-	-
	Quattro 500	2000	-
504	SS 500	2000	-
	504 (4 cylinder)	-	-
650	650 Tornado U.T	-	-
	Tous modeles	-	-
	Tornado U.T.	-	-
654	GS/CS/ST	-	-
	654	-	-
750	750 Sei	2000	-
	750 SS	2000	-
900	900 Sei (6 cylinder)	-	-
	900 TRE Tornado	2003	-
1000	HS2 900	2000	-
	YB6 1000	-	-
	YB10 1000 Dieci	2000	-

<b>BETAMOTOR</b>			
50	Ark Air / Ark Lc 50	1997	-
	Chrono 50	1995	-
	Eikon 50	2000	-
50	Quadra 50	1997	-
	Tempo 50	-	-
125	Eikon 125	2000	-
150	Eikon 150	2000	-

<b>BIMOTA</b>			
600	YB9B 600	2000	-
750	SB3 750	2000	-
	YB9 600	-	-
900	SB3 750	-	-
	DB2 900	1993	1995

# DIVERS

CC	Model	Year	Battery	
<b>BIMOTA</b>				
900	DB2 Final Edition 900	1997	-	YB14-A2
	DB3 Mantra 900	1997	1999	YTX7L-BS
	DB4 900	1998	2000	n/a
	HS2 900	-	-	YB14L-A2
996	Tesi 900	1991	1995	YB14-A2
1000	SB8R, SB8RS 996	1998	2000	YTX12-BS
	YB6 1000	-	-	YB14L-A2
	YB8 1000	1992	1995	YB14L-A2
	YB10 1000 Dieci	-	-	YTX14-BS
1100	YB11 1000	1996	1999	YTX12-BS
	SB6, SB7 1100	1995	1997	YTX7L-BS
	SB6R 1100	1997	1999	YTX12-BS

<b>BMW</b>				
125	C1 125	2000	-	YB14L-A2
150	C1 150	2000	-	YB14L-A2
200	C1 200	2000	-	YB14L-A2
250	R25/2/3 250	-	-	B49-6
260	R26 260	-	-	6N11A-1B
	R27 260	-	-	6N11A-1B
450	R45N 450	1984	-	51814
500	R 50/R 50S/R 50-2/R 50-5	2000	-	51814
	R51/R51-2-3	2000	-	B49-6
600	60-5	2000	-	51814
	R60LS	2000	-	51814
	R60S	2000	-	12N14-3A
650	R60/6? R60/7	1984	-	53030
	F650,S	1998	-	52515
	F650CS	1999	-	YB12AL-A
	R65	1984	1995	53030
750	R69S	-	-	B49-6
	K75 RT	1985	1995	Y60-24AL-B
	K75 C S	1985	1995	51814
800	R75/6, R75/7	1984	-	53030
	R75-5 (Bicylinder)	2000	-	51814
	R75-6	2000	-	53030
850	R80 800	1985	1987	53030
	R80 G/S, R80ST	-	-	N/A
	R80/7, R80RT	1978	1984	53030
	R80, R80RT	1985	-	53030
	R80ET	2000	-	53030
900	R80GS	1988	-	52515
	R85R/RT/GS, R529	2001	-	51913
1000	R90/6, R90S	1984	-	Y60N24AL-B
	R90ST	2000	-	N/A
1100	BMW K1	-	-	52515
	BMW K1	-	-	51913
	K100, K100RS, -RT	-	-	53030
	R100 CS, RS, RT, S, T	1984	-	53030
	R100/7, -CS, -RS, -RT, -S	1984	-	53030
	R100GS LT, RS -Basic, -Mystic	1988	-	52515
	R100R	2000	-	53030
R100RT, R100RS	1985	-	53030	
1150	K1100LT	1993	1998	51913
	K1100RS	1993	1996	51913
	R1100R, GS, LT, RS, RT	1994	2001	51913
1150	R1100S	1999	2002	51913
	R1150GS 1150 ROCKSTER	2000	2002	51913
1150	R1150 R/RT	2001	2002	51913

CC	Model	Year	Battery	
<b>BMW</b>				
1200	K1200 R/Cruiser	1998	2002	51913
	K1200 RS/LT	1997	2002	51913
	K1200 S	2005	-	51913
	R1200 C	1998	-	51913

<b>BUELL</b>				
500	Blast 500	2000	-	YTX14-BS
984	XB9R Firebolt	2002	-	YTX14-BS
	XB-9S Lightning	2003	-	n/a
1000	RR 1000	1987	-	YTX20H-BS
1200	M2 Cyclone / TT Model 1200	1997	-	YTX20L-BS
	RR 1200	1988	1990	YTX20H-BS
1200	RS/RSS 1200	1989	1993	YTX20H-BS
	S1 Lightning 1200	1996	-	YTX14-BS
	S2, S2T Thunderbolt 1200	1994	1996	YTX20H-BS
	S3, S3T Thunderbolt 1200	1997	-	YTX20L-BS
	X1 Lightning 1200	1999	-	YTX20L-BS

<b>BSA</b>				
	Spitfire HK 35, Starfire B25	-	-	YB9L-B
	250, 350, 650 (6V)	-	-	B39-6
	250, 350, 400, 441, 500 (12V)	-	-	YB7-A
	250, 350, 650 (6V)	-	-	B39-6
	250, 350, 400, 441, 500 (12V)	-	-	YB7-A
	500 Gold Star	-	-	B38-6A
	500, 600, 650, 750 (12V)	-	-	YB7-A
	Rocket 750, Thunderbolt	-	-	YB9L-B

<b>CAGIVA</b>				
50	50 City / Lucky / Explorer	1994	1997	YT4L-BS
	50 City / Lucky / Explorer	1994	1997	YT4L-BS
	50 Cucciolo / Mito / Progress	1998	-	YB4L-B
	50 Coccis / Prima / Supercity	-	-	YB5L-B
	50 K3 / W4	1998	-	YB4L-B
80	Cocis 80	-	-	YB4L-B
125	Aletta Oro El. Starter	1985	1987	YB12A-A
	Aletta Oro Kick Starter	-	-	12N5.5-4A
	125 Blues / Elefantre	1984	1995	YB12A-A
	125 Cruiser, CUCC	1987	1989	YB9-B
	125 SST / WSXT	1984	1988	12N5,5-4A
	125 EV	-	-	YB9-B
	125 Freccia C9/C10R/C12R	1987	1990	YB9-B
	125 Fun	-	-	YB9-B
	125 K 7 / Passing	1990	1992	YB4L-B
	125 Mito, -2, Replica	1990	1997	YB9-B
	125 Mito Evolution	1992	-	YB9-B
	125 N90	1997	-	YB9-B
	125 Planet (3 / 6 bts)	1998	-	YB9-B
	125 Roadster	1994	1999	YB9-B
	SM125	2000	-	YTX5L-BS
	125 SST	-	-	12N5.5-4A
	SST 125 (Electr.)	-	-	YB12A-A
	125 Super City	1991	2000	YB9-B
	125 SXT	-	-	12N5,5-3B
	125 Tamanaco	1988	1991	YB9-B
	125 W8	1991	1995	YB10L-B
	125 Wre	2000	-	YTX5L-BS
	125 WSXT (Aletta Rossa)	-	-	12N5.5-4A

# DIVERS

CC	Model	Year	Battery
----	-------	------	---------

CAGIVA				
200	200 Elefant	-	-	12N5,5-4A
	200 Roadster	1995	-	YB9-B
250	250 SST/SX	-	-	12N7-3B
350	350 Elefant (2 cylinder)	1986	-	YB14L-A2
	350 4T Ala Rossa	-	-	12N5,5-4A
	350 T4 E Elefant / W12	1993	1995	YB14L-A2
	350 T4R	1987	-	YB3L-A
	350 SST/SXT	-	-	12N7-3B
500	500 Canyon / River	1999	-	YTX14-BS
	500 T4 E Elefant	1987	1990	YB14L-A2
600	600 River	1995	1996	YB14L-A2
	600 Canyon	1996	1999	YTX14-BS
	600 W 16	1994	1996	YB14L-A2
650	650 Elefant	1985	-	YB14L-A2
	650 V-Raptor	2003	2004	YTX9-BS
750	750 Elefant	1993	1998	YB16B-A1
	750 Elefant Bifaro / Luky Explorer	1987	-	YB14L-A2
900	900 Canyon iE	1996	1997	YB16-B
	900 Elefant AC	1993	1996	YB16A-B
	900 Elefant E900	-	-	YB16B-A1
	900 Grand Canyon	1999	-	YTX14-BS
1000	900 I.E GT / Elefant	1990	1992	YB16B-A1
	1000 Canyon I.E	1997	-	YB16-B
	1000 Gran Canyon	1999	-	YB16-B
	1000 I.E GT	1991	1993	YB16A-B
	1000 Raptor / Xtra-Raptor	2000	-	YTX12-BS
	1000 Navigator	2000	-	YT12-B4

CANNONDALE				
400	EX400, MX400, XC400 432	2000	2001	YTX5L-BS

DAELIM				
125	125 Altino / Custom VT / VS	-	-	12N9-4B-1
	125 Daelim roadwin	-	-	YTX12-BS
	125 NS II / Fellow	1998	-	YTX7A-BS
	125 VC / VS / VT Daystar	1995	-	YB9-B

DERBI				
50	Atlantis	1999	-	YB4L-B
	Aventura / Furax / Hunter 50	1996	1997	YB4L-B
	DRD R 50 D Senda / SM	2002	2005	YB4L-B
	DRD Racing SM	2006	-	YTX5L-BS
	Easy 50	1997	-	YB4L-B
	Fenix / Furax 50	1994	1997	YB4L-B
	Gpr rr / 1	1998	2003	YB4L-B
	Paddock 50	1997	-	YB4L-B
	Predator GP1	-	-	YTX4L-BS
	Predator LC / 02	1999	-	YB4L-B
	Senda L, Senda R 50 / SM	1994	-	YB4L-B
	Sport 50	1997	-	YB4L-B
	Vamos 50	1993	-	YB4L-B
	Variant GS 50	1997	-	YB4L-B
100	Atlantis	-	-	YTX9-BS
	Boulevard	-	-	YB9L-A2
125	Gpr Racing / Nude	2005	2006	YTX5L-BS
	Senda 125 R / SM	2004	2006	YTX5L-BS

CC	Model	Year	Battery
----	-------	------	---------

DUCATI				
350	350 Alazzurra	1987	-	YB14L-A2
	350 Cross	-	-	B38-6A
	350 GTL / GTV / Sport	-	-	Y50-N18L-A2
	350 F3	1987	-	YB14L-A2
	350 Indiana / Pantah / XL	-	-	YB14L-A2
	350 Mark 3, Scrambler	-	-	B38-6A
	350 Sport	-	-	Y50-N18L-A2
	350 SS Supersport	1993	-	YB16AL-A2
	350 Vento	-	-	YB12A-A
	400	400 Alazzurra / F3	1987	-
400 SS Supersport		1991	1999	YB16AL-A2
500	400 TS	-	-	B38-6A
	500 GTL / GTV / Sport	-	-	Y50-N18L-A
600	500 Pantah	-	-	YB14L-A2
	600 Monster / Dark / City Dark	1994	1999	YB16AL-A2
	600 Monster	2000	-	YT12-B4
	600 Pantah	-	-	YB14L-A2
620	600 SS Supersport	1995	1998	YB16AL-A2
	600 TL	-	-	YB14L-A2
	620 Monster iE	2002	-	YT12-B4
650	650 Pantah / Alazura / Indiana	-	-	YB14L-A2
748	748 S, R	2001	-	YT12-B4
	748 SP / Strada / Biposto / SPS	2000	-	YB16AL-A2
	748 Monoposto / Biposto / Sprbike	2001	-	YT12-B4
750	750 F1, Montjuich, Paso	1987	1990	YB14L-A2
	750 GT, Luguna Seca	-	-	Y60-N24AL-B
	750 Indiana	-	-	YB14L-A2
	750 Monster	1997	2000	YB16AL-A2
	750 Monster	2003	-	YT12-B4
	750 New Monster	-	-	YT12-B4
	750 SS	2003	-	YT12-B4
	750 SS Supersport Kick-Str.	-	-	YB12A-A
800	800	-	-	YB16-B
851	851 Superbike	1990	1991	YB16AL-A2
	851 S Superbike / Strada	1991	1992	YB16AL-A2
860	860Kick-Start	-	-	YB12A-A
888	860 GT-GTS	-	-	Y60-N24AL-B
900	888 SP, SP II, SP IV, SP V	1990	1995	YB16AL-A2
	900 IE	2000	2002	YB16AL-A2
	900 Monster / Superlight	1999	-	YB16AL-A2
	900 Monster	2000	-	YT12-B4
	900 Mike Hailwood Replica	-	-	YTX7L-BS
	900 S2 Desmo	-	-	12N12A-4A-1
	900 SD Darmah	-	-	Y60-N24AL-B
	900 SL	1992	1996	YB16AL-A2
	900 SS	1989	1999	YB16AL-A2
	900 SS	2000	-	YT12-B4
	900 SS Kick-Starter	1981	-	YB12A-A
	900 SS / Replica	1981	-	YB12A-A
	900 SS Supersport / Replica	1982	-	YB14L-A2
	900 Supersport FE	1999	-	YB16AL-A2
900 Supersport SS/Replica	1999	-	YB16AL-A2	
906	906 Paso	1990	1992	YB16-B
907	907 I.E Paso	1990	-	YB16B
916	916 Biposto, Senna, Strada	1994	-	YB16AL-A2
	916 I.E., SP, SP S	1994	-	YB16AL-A2
	916 Monster S4	-	-	YT12-B4
	916 Sport Touring 4	-	-	YT12-B4



# DIVERS

CC	Model	Year	Battery	
<b>DUCATI</b>				
944	944 Sport Touring 2	-	-	YB16AL-A2
	944 ST2	2001	-	YT12-B4
996	996 Monoposto, Biposto, S /SPS	2001	-	YT12-B4
	996 Sport Touring 4S	2001	-	YT12-B4
	996 SPS, R	2000	2006	YT12-B4
	999 Superbike	2002	-	YT12-B4
1000	1000 ST2	-	-	YB16AL-A2
	1000 ST4	-	-	YB16AL-A2
	1000 TS Multi Strada	2002	-	YT12-B4

FANTIC				
125	125 Raider LC	-	-	YB3L-A
	125 Strada Sport	-	-	6N4B-2A
250	250 Raider LC	-	-	YB3L-A

GAS GAS				
50	50 Rocky	-	-	YB4L-B
250	250 Pampera	1996	2001	YT4L-BS
320	320 Pampera	1998	2001	YT4L-BS
370	370 Pampera	1997	-	YT4L-BS
400	400 Enduro 4t	2002	-	YTZ7S
450	450 Enduro 4t	2003	2005	YTZ7S

GARELLI				
50	50 Big Racing	1994	-	YB4L-B
	50 Big Wheel	1994	1995	YB4L-B
	50 Grinta	1995	1996	YT4L-BS
	50 Noi	-	-	YB4L-B

GILERA				
50	50 Pony, Pony SR	1994	1995	YB4L-B
	50 Queenie	1995	-	YT4L-BS
	50 Sahel / Team / Urka	-	-	YB4L-B
	50 XLE Tiger	-	-	YB4L-B
	50 Bullit / Easy Moving / Runner	1997	-	YB4L-B
	50 DNA	2001	-	YTX4L-BS
	50 Eaglet	1995	1999	YB4L-B
	50 GSA E-Starter	-	-	YB4L-B
	50 Ice	-	-	YTX4L-BS
	50 Runner	1997	-	YB4L-B
	50 Sioux E. Starter	-	-	YB4L-B
	50 Stalker / Storm / Top Rally	1997	-	YB4L-B
	50 Typhoon / X	1997	-	YB4L-B
80	80 TG2 / TG3	-	-	6N11A-1B
125	125 Apache & Arizona E-Starter	-	-	YB9-B
	125 Apache & Arizona Kick-Start	-	-	12N5,5-3B
	125 Cougar	1999	2001	YB9-B
	125 Crono & CX E-Starter	-	-	YB9-B
	125 Crono & CX Kick-Start	-	-	12N5,5-3B
	125 DNA	2001	-	YB10L-B2
	125 Fast Bike, Freestyle E-Starter	-	-	YB9-B
125 Fast Bike & Freestyle K-Start	-	-	12N5,5-3B	

CC	Model	Year	Battery		
<b>GILERA</b>					
125	125 GFR, KK, KZ E-Starter	-	-	YB9-B	
	125 GTA El. Starter	-	-	YB9-B	
	125 GTA Kick Starter	-	-	YB5L-B	
	125 GFR, KK, KZ K-Start	-	-	12N5,5-3B	
	125 GR 1	-	-	6N11A-3A	
	125 MX1, MXR, Nebraska E-Start	-	-	YB9-B	
	125 MX1, MXR, Nebraska K-Start	-	-	12N5,5-3B	
	125 R1, R1S, RTX, RV, RX Elec	-	-	YB9-B	
	125 R1, R1S, RTX, RV, RX Kick	-	-	12N5,5-3B	
	125 RC Rally	-	-	YB10L-B	
	125 Runner FX / PD	1998	-	YB9-B	
	125 Runner VX 4T	1999	-	YB10L-B2	
	125 SP01, SP02, TOP Rally E-Start	-	-	YB9-B	
	125 SP01, SP02, TOP Rally K-Start	-	-	12N5,5-3B	
	125 TG1	-	-	6N11A-3A	
	125 Typhoon / X	-	-	YB7-A	
	XR1, XR2 E-Starter 125	-	-	YB9-B	
	XR1, XR2 Kick-Start 125	-	-	12N5,5-3B	
	125 TSR	-	-	12N7-4B	
	125 XR Tiger El. Starter	-	-	YB9-B	
	125 XR Tiger Kick Starter	-	-	YB5L-B	
	180	180 Runner FXR, SP	-	-	YB10L-B
		180 Runner SP	1999	-	YTX12-BS
180 Runner VXR 4T		1999	-	YT12-B4	
200	200 Arizona	-	-	12N5,5-3B	
	200 Arizona	-	-	YB9-B	
	200 Fast Bike	-	-	12N5,5-3B	
	200 Fast Bike	-	-	YB9-B	
	200 Motocarro	-	-	B38-6A	
	200 RTX, RV, RX E-Starter	-	-	YB9-B	
	200 RTX, RV, RX Kick-Start	-	-	12N5,5-3B	
	200 RX Enduro	-	-	12N5,5-3B	
	200 T4	-	-	12N5,5-3B	
	250	250 Arizona Rally	-	-	YB10L-B
250 RV NGR E-Starter		-	-	YB10L-B	
250 RV NGR Kick-Start		-	-	12N5,5-3B	
350	350 Dakota E-Starter	-	-	YB10L-A2	
	350 Dakota Kick-Start	-	-	12N5,5-3B	
	350 ER E-Starter	-	-	YB10L-A2	
	350 ER Kick-Start	-	-	12N5,5-3B	
	350 XRT	-	-	YB14L-A2	
500	Dakota E-Starter/ER E-Starter	-	-	YB10L-A2	
	500 Dakota E-Starter	-	-	YB10L-A2	
600	500 Dakota Kick-Start	-	-	12N5,5-3B	
	600 Nord West	1991	1994	YB14L-A2	
600	600 RC C	1989	-	YB14L-A2	
	600 Top Rally, XRT	-	-	YB14L-A2	

HARLEY DAVIDSON				
90	X 90	1973	1976	12N7-3B
125	SS / SX 125	1974	1978	12N7-3B
	SXT 125	1975	1978	12N7-3B
175	TX 125	1973	1978	12N7-3B
	SS / SX 175	1974	1978	12N7-3B
250	SS / SX 250	1975	1978	12N7-3B
500	MT 500 Military	-	-	YB14L-A2

# DIVERS

CC	Model	Year	Battery	
<b>HARLEY DAVIDSON</b>				
883	XL 883 / XLH Sportster	2000	-	YTX20L-BS
	XLH 883 Sportster /883 XLH	1985	1996	YTX20H-BS
1000	XL 1000 Series	1979	1985	YTX20H-BS
	XLH 1000 Sportster / 1000 XLH	1967	1978	YHD-12
	XLCR Cafe racer	1977	1978	YTX20H-BS
	XLH 1000 Sportster	1979	1986	YTX20H-BS
	XLX-61 / XR 1000	1983	1985	YB16-B
	1100	XL 1100 Series / XLH	1987	1993
1130	VRSCA 1130 V-Road	2002	-	YTX14-BS
1200	FL/FLH Series 1200	1965	1977	YHD-12
	FX 1200 Series (Electric Start)	1971	1978	YTX20H-BS
	FX 1200 Series (Kick Start)	1971	1978	12N7-4A
	XL / XLH 1200	1997	1999	YTX20L-BS
	XL1200 Series	1987	1995	YTX20H-BS
	XLH 1200 Sportster	2000	-	YTX20L-BS
1340	Dyna Glide 1340 Series	1991	1995	YB16HL-A-CX
	FL / FLH 1340 Series	1978	1984	YHD-12
	FL / FLH 1340 Series	1997	2000	YTX20H-BS
	FLHR 1340 Road King	1994	1996	Y50-N18L-A
	FLST 1340 Series	1986	1990	YTX20H-BS
	FLST 1340 Series	1991	1999	YTX20L-BS
	FLT / FLHT 1340 Series	1980	1996	Y50-N18L-A
	FXD 1340 Series	1994	-	YB16HL-A-CX
	FXD 1340 Series	1997	2000	YTX20L-BS
	FXLR 1340	1994	-	YB16-B-CX
	FX/FXR 1340 Series	1979	1994	YTX20H-BS
	FXR Series	1999	2000	YTX20H-BS
	FXST 1340 Series/FLST 1340	1980	1990	YTX20H-BS
	FXST 1340 Series	1991	1996	YB16HL-A-CX
	FXST 1340 Series	1997	2000	YTX20L-BS
	FXST 1340 SB Softail	1995	-	YB16HL-A-CX
1450	FL / FLH 1450 Series	1999	2001	YB30L-B
	FXD 1450	1999	2003	YTX20L-BS
	FXST / FLST 1450	2000	2003	YTX20L-BS

<b>HUSABERG</b>				
350	FE Enduro	2000	-	YTX5L-BS
400	400 FC Cross 6 Speed	2000	-	YTX5L-BS
	400 FE Enduro S - E	1996	-	YTX9-BS
450	FE 450e /6	-	-	YTZ7S
	FS 450e /6	-	-	YTZ7S
500	Enduro 500	-	-	YB9-B
	All Models Electric Star	1997	2001	YTX9-BS
550	FE 550e/6	-	-	YTZ7S
650	FE650e/6	-	-	YTZ7S
	FS650e/6	-	-	YTZ7S

<b>HUSQVARNA</b>				
125	SM125S	-	-	YTX4L-BS
	WRE125	-	-	YTX4L-BS
400	TE410E 400	2000	2001	YTX14-BS
450	SM450R / TE	-	-	YTX4L-BS
610	TE610E, SM610S 580	2000	2001	YTX14-BS

<b>HYOSUNG</b>				
50	Cab / Sf	1997	2004	YT4L-BS
125	GA 125 Cruise 1 / 2	1999	2003	YTX9-BS
	Xrx 125 Aquila	00-05	-	YTX7A-BS

CC	Model	Year	Battery	
<b>INDIAN</b>				
	All Models	99-01	-	YTX20-BS
50	Adly 50	-	-	YB5L-B
	Bazooka / Cruise 50	-	-	YB4L-B
	Dragster / Formula 50	1995	1997	YB4L-B
	Formula 50	1997	-	YB4L-B
	Pista 50	-	-	YB4L-B
	Reporter 50	-	-	YB4L-B
	Scoop 50	-	-	YB4L-B
	Torpedo 50	1997	-	YB4L-B
	Velocifero 50	1995	-	YB4L-B
	125	Dragster 125	1999	-
Formula 125		1997	-	YB9-B
Formula / Twin 125		-	-	YTX5L-BS
Millenium 125		2000	-	YTX7A-BS
150	Torpedo 125	1999	-	YB9-B
	Millenium 150	2000	-	YTX7A-BS
180	Torpedo 150	2000	-	YB9-B
	Dragster 180	1997	-	YB10L-B2

<b>ITALJET</b>				
50	Adly 50			YB5L-B
	Bazooka / Cruise 50			YB4L-B
	Dragster / Formula 50	95-97		YB4L-B
	Formula 50	97-		YB4L-B
	Pista 50			YB4L-B
	Reporter 50			YB4L-B
	Scoop 50			YB4L-B
	Torpedo 50	97-		YB4L-B
	Velocifero 50	95-		YB4L-B
	125	Dragster 125	99	
Formula 125		97-		YB9-B
Formula / Twin 125				YTX5L-BS
Millenium 125		00-		YTX7A-BS
150	Torpedo 125	99		YB9-B
	Millenium 150	00-		YTX7A-BS
180	Torpedo 150	00-		YB9-B
	Dragster 180	97		YB10L-B2

<b>KTM</b>				
50	50 Go Chrono Kross	1995	-	YT4L-BS
80	80 Chopper PL	-	-	12N9-4B-1
	80 RLW / RSL	-	-	12N9-4B-1
125	125 LC2	1996	1997	YT4L-BS
	125 Sting	1997	1998	YT4L-BS
250	EXC RACING	2004	-	YTZ5S
	400 E/XC Racing 4-Stroke	2000	2002	YT4L-BS
400	400 EXC RACING	-	2003	YTZ5S
	400 E/XC Racing 4-Stroke (Opt)	2000	2002	YTX5L-BS
	LC4E/XC/LS/E/RXC	1993	1998	YTX9-BS
450	EXC RACING	2003	-	YTZ5S
500	500 K4 / 550 LC4	-	-	YB9-B
520	520 E/XCM/XC Racing 4	2003	-	YTX5L-BS
	520 E/XCM/XC Racing 4	2004	-	YTZ5S
525	MX Desert Racing	2003	-	YTZ5S
620	Adventure / LC4 / Duke 620	1994	1998	YTX9-BS
625	Adventure / LC4 / Duke 620	-	2003	YTX9-BS
640	640 Adventurer duke Rxc Lc4 SM	1999	2002	YTX9-BS
	640 Supermoto	1999	-	YTX9-BS
950	950 KTM Aventure	2002	-	

# DIVERS

CC	Model	Year	Battery
----	-------	------	---------

KYMCO			
50	Cobra Racer 50	-	YTX5L-BS
125	Sector	-	12N7A-3A
	Zing 125	-	YTX7A-BS
150	MXer	-	YTX9-BS
250	B&W	-	YTX12-BS
	Dink	-	YTX12-BS

LAVERDA			
125	125 CU Rider / GS Lesmo /LB	-	12N5.5-3B
	125 LZ (Zundapp)	-	6N11A-1B
600	600 OR Atlas	-	YB14L-A2
650	650 Ghost / Strike	-	YB14L-A2
668	668 Diam. / Ghost / Legend /Strike	1999	Y51814
750	750 Carenata / Diamante	1999	Y51814
	750 Formula	-	YB4L-B
	750 Ghost / Strike / Formula	1999	Y51814
	750 SF / SFC / GTL / GTS / Strike	-	12N24-3A
	750 GTL / SFC / S	1999	Y51814
1000	1000 RGS	-	Y60-N24AL-B
1200	1200	-	Y60-N24AL-B

MAICO			
1200	GS 125 / 250 TM / 360 T	-	B39-6
	MD 250 / Cup	-	12N5-3B
	TM 250 / M 250	-	B39-6
	T 360 / T 400 / T 440	-	B39-6
	GS 504	-	B39-6

MALAGUTTI			
50	All 50 models	-	YB4L-B
100	100 CIAK	1999	YB5L-B
	100 F12 / Phantom	1999	YT5L-BS
125	125 Ciak / F18	-	YB9-B
	125 Madison	2000	YB9-B
	125 Runner R	1986	6N6-3B
	125 Runner VS / Rally	1987	12N5.5-4B
150	150 Ciak / F18 / Madison	1999	YB9-B
180	180 Madison	-	YB9-B
250	250 Madison	2000	YB9-B

MBK				
50	Active 50	-	YB4L-B	
	Hunter/Fizz/Flipper/Nitro/Equalis	-	YB4L-B	
	Booster/Evolis/Sorriso/Target	-	YB4L-B	
	Forte/Ovetto	-	YB4L-B	
	50 X-Limit 5 BK	1997	2002	YB3L-A
	50 X-Limit Super Motard	2002	-	YB4L-B
	Hot Champ / X-Power	1997	-	YT4L-BS
80	80 Evolis	1994	1997	YB4L-B
100	100 Booster	1999	-	YTX5L-BS
	100 Nitro / Ovetto	2000	-	YB12A-B
125	Active 125	-	YB7C-A	
	Doodo 125	2000	-	12N7-3B
	Flame R 125	1995	-	YTX7A-BS
	Skyliner 125	2000	-	12N7-3B

CC	Model	Year	Battery
----	-------	------	---------

MBK				
125	Skyliner 125	1999	-	YB7L-B2
	125 Thunder	2001	2002	YTX7L-BS
	XC Flame / Flame R	-	-	YTX7A-BS
150	150 Vertex	-	-	YTX7A-BS
	150 Skyliner / Doodo	1996	-	12N7-3B
250	250 Skyliner	2000	-	YT7-B4
300	Kilibre	2004	-	YTX9-BS

MOTO GUZZI				
125	125 Bicilindrico	-	-	6N11A-1B
	125 Custom	-	-	12N9-4B-1
	125 Stornello Scrambler	-	-	B38-6A
	125 Stornello Sport	-	-	B39-6
	125 TT	-	-	12N5.5-4A
160	160 Stornello Scrambler	-	-	B38-6A
175	175 Lodola	-	-	B49-6
200	200 Galletto / Motocarro Ercolino	-	-	12N24-3A
250	250 4 cylinder	-	-	YB12A-A
	250 Bicilindrico	-	-	6N11A-3A
350	350 Florida	-	-	YB18L-A
	350 GTS (4 cylinder)	-	-	Y51814
	350 NTX	1990	-	YB18L-A
	350 V35 / Nevada	1990	-	Y60-N24AL-B
400	400 GTS (4 cylinder)	-	-	Y51814
500	Falcone 500	-	-	B38-6A
	Falcone u. t. 500	-	-	YB18L-A
	V50 500	-	-	Y60-N24AL-B
	NTX 650	-	-	YB18L-A
650	V65 650	-	-	Y60-N24AL-B
	V65 Florida 650	-	-	YB18L-A
	750 Nevada / Club / Targa	1992	-	YB18L-A
750	NTX 750	-	-	YB18L-A
	Strada 750	-	-	YB18L-A
	V7 750 Ippogrifo	1997	-	Y60-N24AL-B
850	V75 750/BREVA	-	-	YB14L-A2
	Le Mans 850 - Ts Models 850	1975	-	Y60-N24AL-B
	T3, T4, T5 850	-	-	Y60-N24AL-B
1000	California II / III 1000	1985	1993	Y60-N24AL-B
	Convert 1000	-	-	Y60-N24AL-B
	Daytona 1000	1991	-	Y60-N24AL-B
	Le Mans 1000	1985	-	Y60-N24AL-B
	Mille 1000	-	-	Y60-N24AL-B
	1000 NT 1000	-	-	Y60-N24AL-B
	Quota 1000 iE	1992	-	Y60-N24AL-B
	SP / V10 Centauro Sport 1000	1991	-	Y60-N24AL-B
1100	California, Special, Jackal 1100	1994	2000	Y60-N24AL-B
	VII EV 1100	1998	1999	Y53030
	VII BASSA	1999	-	Y53030
	1100 V11 / Sport / Quota	1999	2002	Y60-N24AL-B
	1100 V11 / Sport / Quota	2003	-	

MUZ / MZ				
125	ES 125 / TS 125 / ETS 125	-	-	6N11A-1B
	ETZ 125	-	-	12N9-3B
	125 Roadstar	1993	1994	YB5L-B
150	125 Sazson Sport Star	1993	1997	YB5L-B
	150 ETZ	-	-	12N9-3B
	150 TS	-	-	6N11A-1B

# DIVERS

CC	Model	Year		Battery
<b>MUZ / MZ</b>				
250	TS 250 / ETS 250	-	-	6N11A-1B
	ETZ 250	-	-	12N9-3B
251	251 Saxson Fun / Tour	1993	1994	YB5L-B
301	301 Saxson Fun / Tour	1993	1994	YB5L-B
500	500 Green Star / Red Star	1997	-	YB14L-A2
	500 Saxson Country / Fun	1993	1997	YB14L-A2
	500 Silver Star Classic / Tour	1993	1996	YB14L-A2
650	Skorpion 650	-	-	YB9L-B
660	Skorpion 660 / Mastiff	1995	2001	YB9L-B

MV AGUSTA				
125	125 GT / GTL	-	-	6N11A-1B
	GT 125 SP	-	-	12N5.5-3B
250	TE-SM	-	2005	YTZ7S
350	350 Scrambler Elettronica	-	-	12N5.5-3B
450	TE-SM	-	2005	YTZ7S
510	TE-SM	-	2005	YTZ7S
750	750 Aviamento / GT / Serie Oro	-	-	Y60-N24AL-B
	F4 750	2000	2001	YT9B-4
800	800 S / SS	-	-	Y60-N24L-A
900	900 GT	-	-	Y60-N24L-A
1000	1000 Corona	-	-	Y60-N24L-A
1100	1100 Grand Prix	-	-	Y60-N24L-A

NORTON				
350	Navigator 350	-	-	6N11A-1B
	Ranger Commando 750	-	-	YB9-B
750	Commando, Commando 75 850	-	-	YB14L-A2

PANDA MOTOR SPORTS				
50	Com-ute 36 / Com-ute 49	1998	2001	6N4-2A
	Cub 50	1997	2001	YT4L-BS
	Fun Rider 50	1998	2001	6N2-2A
	Trail Rider 70	2000	2001	YT4L-BS

PEUGEOT				
25	25 FOX LA	1995	1997	YB4L-B
50	All Models 50	-	-	YB4L-B
	Elystar	-	-	YTC4L-BS
	Elyseo	-	-	YB4L-B
	Jet Force	-	-	YB7-A
80	SV Geo 80	1991	-	YB5L-B
	100 Elyseo	1998	-	YB7-A
100	100 Elyseo	2001	-	12N7-3B
	100 Looxor/Speedfight/Trekker	2001	-	YT5L-BS
	100 Vivacity/X-Fight	2001	-	YT5L-BS
	100 Speedfighter/Trekker/Vivacity	1998	-	YTX5L-BS
	100 SV	1997	-	YB5L-B
	100 X-Fight / Zenith	2001	-	YB4L-B
	105	105 Ciclomotore (E-Starter)	2001	-
125	125 Elyseo	-	-	YB7-A
	125 Elystar	2002	-	YB7-A
	125 SV	1993	1997	YB5L-B
	125 LIBERTY	-	-	YB9-B

CC	Model	Year		Battery
<b>PEUGEOT</b>				
150	150 Elyseo	1998	-	YB7-A
	150 Elystar	2002	-	YB7-A
250	250 ST	2001	-	YTX12-BS

PGO				
50	Comet / Galaxy / Big Max	1994	-	YT4L-BS
	Rodo Show / Tornado	1997	-	YT4L-BS
	Star / EPS / Tornado	-	-	YB4L-B

PIAGGIO					
25	25 Free / FL / Velofax / Zip	1994	1998	YB4L-B	
	50 Free FL / Liberty	1994	1999	YB4L-B	
50	50 Liberty FL / APE 50 FL	-	-	YB9-B	
	50 N	-	-	6N11A-1B	
	50 NRG / Extreme / NTT / Quartz	-	-	YB4L-B	
	50 Scatto/Sfera/Typhoon/Velofax	1992	-	YB4L-B	
	PK 50 S/FL/FL2/HP Vespa	-	-	YB7-A	
	PK 50 XH/Rush Vespa	-	-	YB7-A	
	V 50 A / 50 Storm	-	-	YB7-A	
	50 Vespa Elestar	-	-	6N11A-3A	
	50 Vespa ET2/Injection	-	-	YB4L-B	
	50 Zip 4T / 2T	2000	-	YTX9-BS	
	50 Zip/Fast Rider/FR/RST/SP	-	-	YB4L-B	
	80	P 80 X / PK 80	-	-	12N5.5-3B
		PX 80 E / Lusso / PK 80 S/XL	-	-	YB7-A
		PX 80 E	-	-	YB9-B
80 Sfera / Typhoon		1995	-	YB5L-B	
125	V 125 A / Sfera / Skipper / SKR	1994	1998	YB7-A	
	125 Beverly / Hexagon LX4	2000	-	YB10L-B2	
	125 Cosa/CL/FL/X/Excutive	-	-	YB9-B	
	125 Hexagon/LX/RST/Skipper	1994	-	YB9-B	
	125 Liberty/Skipper LX/ST 4T	1999	-	YB9-B	
	125 ST4 Leader / Zip 4T / ET4	2000	-	YTX9-BS	
	125 Superhexagon GTX	2000	-	YTX12-BS	
	125 Typhoon	1995	1998	YB7-A	
	125 Vespa ET4 / PX E	1996	1999	YB9-B	
	Cosa CLX 125 C/AVV	-	-	YB7-A	
	125 Vespa ETS/PK-S/FL/XL/T5	-	-	YB7-A	
	125 Vespa P X	-	-	12N5.5-3B	
150	125 Vespa Sprint	-	-	B39-6	
	125 X8	2000	2005	YB10L-B2	
	125 X9	2000	2005	YB9-B	
	150 Cosa CL/X /Skipper/ Vespa PXX	-	-	YB7-A	
	150 Excutive/Hexagon/ Liverty LE	-	-	YB9-B	
	150 Skipper LX/ST 4T	1999	-	YB9-B	
	150 Vespa ET4 / PX E	-	-	YB9-B	
	150 Vespa GL	-	-	B39-6	
	150 Vespa GS / Sprint	-	-	B49-6	
	180 Hexagon LXT	1999	-	YB9-B	
180	180 Hexagon LXT / Superhex. GTX	2000	-	YTX12-BS	
	180 Vespa SS	2001	-	B49-6	
	180 X9	2001	-	YB9-B	
200	P 200 E / PX 200 E Vespa / Cosa	-	-	YB9-B	
	PX 200 GS	-	-	YB9-B	

## DIVERS

CC	Model	Year	Battery	
<b>PIAGGIO</b>				
250	250 Hexagon	1998	-	YB9-B
	250 Hexagon/Superhexagon GTX	1999	2000	YB10L-B
	250 Hexagon GT	2000	-	YTX12-BS
	250 Superhexagon GTX / X9	2001	-	YTX12-BS
	250 X9	2001	-	YB10L-B
500	500 X9	2001	-	YB14L-A2

<b>POLARIS</b>				
150	Victory 1507 V92C V92SC 92TC	1998	2002	YTX20L-BS
500	Scambler	-	-	YB14A-A1

<b>PUCH</b>				
50	50 Cobra GT/GTL / Jet	-	-	B39-6
	50 Lido SL / Lido Vario	-	-	YB4L-B
	50 Monza GSL/GT/GTL/Super	-	-	B39-6
	50 Monza 4 S/SL / 6 SL	-	-	B39-6
	50 MS SDP	-	-	B39-6
80	80 Cobra GT	-	-	B39-6
	80 Lido SE	-	-	YB5L-B
125	125 Lido CD	-	-	YB7-A

<b>ROYAL ENFIELD</b>				
500	Bullet 500	1995	2001	YB7-A

<b>RIEJU</b>				
50	50 Rieju SMX/MRX	-	-	YB4L-BS
	50 RS1 / Evolution / Castrol / Nkd	1998	-	YB4L-B

<b>SCORPA</b>				
450	450 Enduro / Super motard	2004	-	YT7-B4

<b>TM</b>				
	25/400/450/530	02-	-	YTX7L-BS

<b>TRIUMPH</b>				
120	120 Bonneville / 150 Trident	-	-	YB7L-B2
	TR 25 W / T / SS / 6	-	-	12N9-4B-1
	T 120 / T 150	-	-	12N9-4B-1

CC	Model	Year	Battery	
<b>TRIUMPH</b>				
173	Tigress 173	-	-	6N11A-1B
200	Tiger 200	-	-	6N11A-1B
250	Tigress 250 (12V)	-	-	6N11A-1B (x2)
350	350 (6V)	-	-	6N11A-1B
	350 (12V)	-	-	B39-6 (x2)
	3TA, Twenty One 350	-	-	B38-6A
500	500 (12V)	-	-	B39-6 (x2)
	5TA, TR5A/R 500	-	-	6N11A-1B
599	Daytona 600	-	-	YTX9-BS
600	600 (12V)	-	-	B39-6 (x2)
	6T, T20B 600	-	-	6N11A-1B
	TT 600	2000	2002	YTX12-BS
650	650 Bonneville	-	-	YB7L-B2
675	675 Daytona	2006	-	YTX7L-BS
750	750 Bonneville / 750 Tiger	-	-	YB9-B
	TSS 750 / TSX 750	-	-	YB14L-A2
	750 Daytona / Trident	1991	-	YB14L-A2
	750 All other models	1993	1997	YB14L-A2
800	800 Speed master	-	-	YTX12-BS
	800 Bonneville	2001	2006	YTX12-BS
885	885 Speed Triple	1997	-	YB14L-A2
900	900 Bonneville / Scrambler / Truxton	-	2006	YTX12-BS
	900 Daytona / Trident / Trophy	-	-	YB14L-A2
	900 Adventurer / Speed Triple	-	-	YB14L-A2
	T90	-	-	6N11A-1B
	900 Thunderbird	1995	-	YB14L-A2
	900 Tiger	1993	1998	YB14L-A2
	900 Tiger / Adventurer	2002	-	YTX14-BS
	955	955 All other models	1996	2006
955	955 Daytona / Speed Triple / Sprint	1999	2006	YTX14-BS
1000	1000 Daytona / 1200 Trophy	1998	-	YB14L-A2
1050	Sprint ST	-	-	YTX12-BS
1200	Trophy 1200	1999	2001	YTX14-BS
	1200 Tous les autres Models	1993	1999	YB14L-A2
2294	Rocket 3	2004	-	YTX20L-BS

<b>VOXAN</b>				
995	Sport Evo	-	-	
1000	Cafe Racer V1000	1999	-	YTX20L-BS
	Roadster V1000	1999	-	YTX20L-BS
	Scrambler V1000	1999	-	YTX20L-BS

# Applications - QUADS / ATV / UTILITY VEHICLE

## AEON-ATV

CC	Model	Year		Battery
50	Cobra/CX-Sport 50	-	-	YT4L-BS
90	Cobra/CX-Sport 90	-	-	YT4L-BS
100	Cobra/CX-Sport 100	-	-	YT4L-BS
220	Cobra	2005	-	
	Predator	-	-	YTX9-BS

## ARCTIC CAT - ATV

CC	Model	Year		Battery
250	250 All Models	-	-	YB14L-A2
300	300 All Models	-	-	YB14L-A2
400	400 All Models	-	-	YB14-A2
500	500 All Models	1991	2001	YTX20H-BS

## BAROSSA

CC	Model	Year		Battery
170	Magna / Baja	-	-	YTX7A-BS
250	Quarterback / Silverhawk	-	-	YTX9-BS

## BOMBARDIER - ATV

CC	Model	Year		Battery
200	Rally	2005	-	
250	DS	2005	-	
330	Outlander	2003	-	YTX15L-BS
400	Outlander	2000	2003	YTX15L-BS
400	Outlander	2004	-	YTX20L-BS
500	Traxter	1999	2001	YB16L-B
650	DS	2000	-	YTX15L-BS
	Quest	2002	-	YB16CL-B
800	Max / HO / EFI	2005	-	

## CANNONDALE - ATV

CC	Model	Year		Battery
432	FX400 432	2001	-	YTX9-BS

## DERBY

CC	Model	Year		Battery
250	DXR 250	2005	-	

## E-TON

CC	Model	Year		Battery
50	AXL,TXL,NXL,RXL	1999	2003	YTX4L-BS
90	AXL,TXL,NXL,RXL	2000	2003	YTX5L-BS
	DXL90 Sierra	1999	2003	YTX4L-BS
150	CXL Yukon	2000	2005	YTX9-BS

## HONDA - ATV

CC	Model	Year		Battery
125	ATC 125 M	1984	1985	YB9A-A
	ATC 125 M	1986	1987	YTX12-BS
	TRX 125 Fourtrax	1985	1986	YB9A-A
	TRX 125 Fourtrax	1987	1988	YTX9-BS
200	ATC 200 E Big Red	1982	1983	YB14A-A2
	ATC 200 ES Big Red	1984	-	YB14A-A2
	ATC 200 M	1984	1985	YB14A-A2
	ATC 200 S	-	-	YTX12-BS
	TRX 200 Fourtrax	1984	-	YB14A-A2
	TRX 200 Fourtrax	1990	1991	YTX12-BS
	TRX 200 Fourtrax Type II	1991	1996	YTX12-BS
250	TRX 200 SX Fourtrax	1986	1988	YTX12-BS
	ATC 250ES Big red / SX	2003	-	YTX9-BS
300	Four 300 EX	1996	-	YTX14-BS
	TRX 300 Fourtrax	1992	2000	YTX14-BS
	TRX 300 EX Fourtrax	1988	2000	YTX9-BS
350	TRX 300 FW Fourtrax 4x4	1988	2000	YTX14-BS
	FL 350 R Odyssey	1985	-	YTX12-BS
	TRX 350 Fourtrax	1986	1987	YTX14-BS
	TRX 350 Rancher	2000	-	YTX14-BS
400	TRX 350 D Fourtrax 4x4	1987	1989	YTX14-BS
	FL400R Pilot	1989	1990	YTX14-BS
	TRX400EX Sportrax	1999	2003	YTX9-BS
450	TRX400FW Foreman	1995	2003	YTX14-BS
	TRX450 Fourtrax Foreman	1998	2003	YTX14-BS
500	TRX500FA Fourtarx	-	-	YTX14-BS
650	TRX 650 FA Fourtrax Rubicon	2003	-	YTX14-BS

## HUSABERG - ATV

CC	Model	Year		Battery
	All Models Electric Start	2001	-	YTX9-BS

## KAWASAKI - ATV

CC	Model	Year		Battery
110	KLF 110 -B Mojave	2003	-	YTX5L-BS
185	KLF 185 -A Bayou	1987	1988	YB9L-A2
	KLT 200 -A, C	1985	1988	YB10L-B
200	KLT 200 -B, C	1981	1984	12N10-3B
	KLF 220 -A Bayou	1983	-	YB12A-A
220	KLF 220 -A Bayou (CN)	1988	1999	YB10A-A2
250	KLT 250 -A /A-Bayou	1992	2003	YB14A-A2

## KAWASAKI - ATV

CC	Model	Year		Battery
250	KLT 250 -C Prairie	1982	1983	YB12A-A
	KLT 250 -A	1982	1983	YB12A-A
	KLT 250 D	1984	1985	YB10L-B
300	KEF 300 -A Lakota	1985	-	YB10L-B
	KEF 300 -B Lakota Sport	1995	2000	YB14A-A2
	KLF 300 -A Bayou	2001	2002	YB14A-A2
	KLF 300 -B1-B4 Bayou	1986	1987	YB16L-B
	KLF 300 -B5-B12 Bayou	1988	1991	YB14A-A2
	KLF 300 -B Bayou (CN)	1988	2002	YB14A-A2
	KLF 300 -C1, -C3 Bayou	1992	1998	YB16CL-B
	KLF 300 -C4, -C11, C12	1989	1991	YB14A-A2
	KVF 300 -A, -B	1989	1999	YB16CL-B
	400	KLF 400 -B Bayou 4x4	1999	2000
KVF 400 -A Prairie 4x4		1993	2000	YB16CL-B
KVF 400 -A Prairie 4x4 (CN)		1997	2000	YB14A-A2
KVF 400 -B1, 2 Prairie		1997	2000	YB16L-B
KVF 400 -B1 Prairie (CN)		1998	-	YB14A-A2
KVF 400 -C, D Prairie		1998	-	YB16CL-B
KVF 400 -C, D Prairie (CN)		1999	2000	YB14A-A2
650	KVF650-AAAdvantage Classic	2002	2003	YB14A-A2
700	KFX700 V - Force	1999	2000	YTX14-BS

## KYMCO - ATV

CC	Model	Year		Battery
50	KXR /MXU	-	-	YB7BL-A1
90	KXR /MAXXER	-	-	YB7BL-A1
150	MXER /MXU	-	-	YTX9-BS
250	KXR / MXU	-	-	YTX12-BS
300	MXU	-	-	YTX12-BS
500	MXU	-	-	YTX20-BS

## PANDA MOTOR SPORTS - ATV

CC	Model	Year		Battery
50	KD 50	-	-	YB7-A
80	KD 80	-	-	YB7-A
125	KD 125	-	-	YB7-A

## POLARIS - ATV

CC	Model	Year		Battery
50	Scrambler 50	2001	2002	YT4L-BS
	Scrambler 50	2001	-	YTX5L-BS
90	Sportsman Predator,	2003	2004	YTX5L-BS
	FENIX	2005	-	YTX12-BS
200	Scrambler ,Sportman	2001	2002	YT4L-BS
	All Models 250	2001	2003	YT4L-BS
300	All Models 300	1985	2001	YB14A-A2
325	All Models 325	1987	2000	YB14A-A2
335	Sportsman 335	1987	2001	YB14A-A2
400	All Models 400	1998	2001	YB14A-A2
425	All models 425	1995	2003	YB14A-A2
445	Diesel 445 Liter (primaire)	1990	2000	YB14A-A2
	Diesel 445 Liter (secondaire)	1999	2001	YB30L-B
500	All Models 500 (Ranger 6x6)	1999	2001	YB14A-A2
	Predator	2003	-	YTX9-BS
700	700 Sportsman	2002	2003	YB30L-B

## SUZUKI - ATV

CC	Model	Year		Battery
80	LT 80 Quad Sport 80	-	-	YTX5L-BS
160	LT-F 160 QuadRunner	1987	2002	YB9A-A
160	LT 160 E QuadRunner	1989	2004	YB9A-A
230	LT-F 230 QuadRunner	1989	1994	YB9A-A
	LT230 E QuadRunner	1986	1987	YB10A-A2
	LT 230 E QuadRunner	1987	1993	YTX12-BS
	LT 230 GE QuadRunner	1985	1986	YB10A-A2
	LT230E QuadRunner	1988	1993	YTX12-BS
	LT-4WD 250 QuadRunner	1987	1999	YB14A-A2
250	LT-4WD 250 QuadRunner (Opt)	1987	1999	Y50-N18A-A
	LT-F 250 Ozark	2002	2004	YTX12-BS
	LT-F 250 QuadRunner (Opt)	1988	2001	YB14A-A2
	LT 250 EF Quadrunner	-	-	Y50-N18L-A
	LT-F 250 F QuadRunner (CN,Opt)	2004	-	Y50-N18A-A
	LT-F 4WDX KingQuad	1986	1999	YB14A-A2
	LT-F4 WDX KingQuad (CN, Opt)	1996	1999	Y50N18A-A
280	LTZ250EF Quarunner	2004	-	YTX12-BS
	LT F4WDX King Quad	1991	1999	YB14A-A2
300	LT 300 E QuadRunner 300E	1987	1989	YB14A-A2
	LT-F 300 KingQuad	1999	2001	YB14A-A2
	LT-F 300 KingQuad (CN, Opt)	1999	2001	Y50-N18A-A
400	LTZ 400	2003	2006	YTX9-BS
	KFX 400	2006	-	YTX9-BS
500	LT-A500F Vinson	2002	2003	YTX16-BS-1
	LT-A500F Vinson	2004	-	YTX20CH-BS
	LT-F 500 F QuadMaster	1998	2003	YTX16-BS-1
	LT-F 500 F QuadRunner	2000	2001	YTX16-BS-1
700	LT700 Twin Peaks	2004	2005	YTX20CH-BS
	LT700 X Kingquad	2005	2006	YTX16-BS-1



## YAMAHA - ATV

CC	Model	Year		Battery
80	YFM 80 Badger	1985	2001	12N7D-3B
	YFM 80 R Raptor	37317	-	12N7D-3B
100	YFM 100 Breeze	1987	1991	12N7D-3B
	YFM 100 Champ	1987	1991	12N7D-3B
	YFU-1 100 Pro-Hauler	1989	-	YB14A-A1
125	YFA1 Breeze 125	1989	2003	YB12C-A
	YFM 200 Four Wheel	1985	-	YB14A-A2
200	YFM 200 DX Moto 4	1985	-	YB14A-A2
	YTM 200, E, ER Tri Moto	1983	1985	YB14A-A2
	YFS 200 F Blaster	-	-	YB14A-A2
225	YFM 225 Four Wheel/Moto 4	1986	1988	YB14A-A2
	YTM 225 DR Tri Moto	1985	1986	YB14A-A2
	YTM 225 DX Tri Moto	1983	1994	YB14A-A2
230	YFU-1/T 230 Pro-Hauler	1989	-	YB14A-A2
250	YFB 250 Timber Wolf	1992	1998	YB12C-A
	YFB 250 FW Timber Wolf	1994	2000	YB12C-A
250	YFM 250	1999	-	YB14A-A2
	YFM 250 Bear Tracker	1999	2003	YB14A-A2
	ATC 250 EC Big Red	1985	1987	YTX12-BS
	ATC 250 SX	1985	1987	YTX12-BS
	TRX 250 Fourtrax	1985	1987	YTX12-BS
	TRX 250 Recon	1997	2003	YTX12-BS
	TRX 250 EX, Sportrax	2001	2002	YTX9-BS
	YFM 250 Four Wheel	1989	1991	YB14A-A2

## YAMAHA - ATV

CC	Model	Year		Battery
350	YFM 350 ER/Moto 4	1987	1995	YB14A-A1
	YFM 350 FW Big Bear	1987	1999	YB14A-A1
	YFM 350 FX Wolverine	1985	2003	YB12C-A
	YFM 350 U Big Bear	1996	1999	YB14A-A1
	YFM 350 X Warrior	1987	2003	YB12C-A
	YFP 350 Terra Pro	1988	-	YB14A-A1
	YFZ 350 F Banshee	-	-	YB14A-A1
	FL 400 R Pilot	1989	1990	YTX14-BS
	TRX 400 FW, EX	1995	2003	YTX20L-BS
	400	YFM 400 FMKodiak	1996	2002
YFM 400 FW Kodiak/Auto-matic		2003	-	YTX14AH-BS
YFM 400 FWF Kodiak		1993	1995	YB14A-A1
YFM 400 FW/N Big Bear		2000	2003	YTX20L-BS
LTZ-Z400 QuadSport		2003	-	YTX20L-BS
450	TRX 450 S Fourtrax S, ES	1998	2003	YTX20L-BS
	YFM 450 FW Kodiak/Auto-matic	2003	-	YTX20L-BS
	YFM 450 Wolverine 4x4	2006	-	n/a
600	YFV 600 FW Grizzly	1998	2001	YTX20L-BS
	YFZ 450	2003	-	YT7-B4
660	YFM 660 FW Grizzly	2002	2003	YTX20L-BS
	YFM 660 R Raptor	2001	2003	YTX14-BS
	YFM 700 Raptor	2006	-	YT9-B4



# Applications - Personal watercraft

## ARCTIC CAT

CC	Model	Year	Battery
	Tiger Shark (All Models)	1993 2001	YB16C-B

## BOMBARDIER

CC	Model	Year	Battery
	All Models	1988 1993	YTX20L-BS
	All Models	1994 2001	YB16CL-B
	Gtx4-Tec	2003 2004	YB30CL-B
	All Models	1999 -	Y50-N18L-A
	CK3 Types	2003 -	Y50-N18L-A
	ZX Types	1999 2001	YTX15L-BS
	ZX Types	2002 2003	YTX20L-BS

## HONDA - JET SKI

CC	Model	Year	Battery
1235	Aqua Trax F-12X	02-03 -	YTX20L-BS

## KAWASAKI - JET SKI

CC	Model	Year	Battery
300	JS 300 -B TS	1986 1988	YB16CL-B
399	JS 399 -A SX	1987 1991	YB16CL-B
400	JS 400 -A	1976 -	YB16L-B
440	JS 440 -A	1977 1992	YB16CL-B
550	JS 550 -A	1982 1989	YB16CL-B
	JS 550 -B, C SX	1990 1995	YB16CL-B
650	JF 650 -A X-2	1986 1995	YB16CL-B
	JF 650 -B TS	1989 1996	YB16CL-B
	JL 650 -A SC	1991 1995	YB16CL-B
	JS 650 -A, B SX	1987 1995	YB16CL-B
750	JH 750 A1-A4 (X-4)	1992 1995	YB16CL-B
	JH 750 B1-B3 ( Xi)	1993 1995	YB16CL-B
	JH 750 C1-C3 (Zxi)	1995 1997	YTX20L-BS
	JH 750 E1 (X-4)	1996 -	YTX20L-BS
	JH 750 F2 (Xi-II)	1997 -	YTX20L-BS
	JH 750 G1/G2	1998 1999	YTX20L-BS
	JS 750 A1-A4 (SX)	1992 1995	YB16CL-B
	JS 750 B1-B3 (Sxi)	1995 1997	YTX20L-BS
	JS 750 C1/C2 (Sxi Pro)	1998 1999	YTX20L-BS
	JT 750 A (ST), B1 (STS)	1994 -	YB16CL-B
	JT 750 B2 (STS)/XIR/ST	1995 1996	YTX20L-BS
900	JH 900 A1/A2 (Zxi)	1995 1996	YTX20-BS
	JT 900 A2 (STX)	1998 -	YTX20-BS
	JT 900 B1 (STX)	1999 -	YTX20-BS
1100	JH 1100 A1-A3 (Zxi)	1996 1998	YTX20-BS
	JT 1100 A1, B1/B2 (STX)	1997 1998	YTX20-BS
1200	JH 1200 -A	1999 2000	YTX20-BS
	JT1200 A STX-R	2002 2004	YTX20-BS
1500	JT1500-C STX-15F	2004 -	YTX20-BS

## POLARIS

CC	Model	Year	Battery
650	SL 650 SL	1992 1995	YB16CL-B
	Hurricane 700	1996 -	YB16CL-B
700	SL 700	1996 -	YB16CL-B
	SLT 700	1996 -	YB16CL-B
750	SL 750, SLT 750	1995 1996	YB16CL-B
780	SL 780	1996 -	YB16CL-B
	SLT 780	1996 -	YB16CL-B
	SLX 780	1996 -	YB16CL-B
900	SL 900	1996 -	YB16CL-B
1050	SLTX 1050	1996 -	YB16CL-B

## ULTRANAUTICS

CC	Model	Year	Battery
800	Jet Star 1250	- -	Y60-N24LA
	Sea Flash	- -	Y60-N24LA
	Wet Bike	- -	Y60-N24LA

## WET JET

CC	Model	Year	Battery
300	Wet Jet 700 Duo 300	1995 -	YB16-B
428	Wet Jet 428	1987 -	YB16-B
432	Wet Jet 432 SE, Sport, Spirit	1988 1993	YB16-B
600	Wet Jet 600 Duo	1995 -	YB16-B
	Wet Jet 600 Duo ZX, Kraze	1995 1996	YB16-B

## YAMAHA

CC	Model	Year	Battery
500	Wave Jammer 500	1987 1991	YB16CL-B
	Wave Runner 500	1987 1994	YB16CL-B
650	Superjet 650	1993 1995	YB16CL-B
	Wave Runner 650 LX	1990 1996	YB16CL-B
700	700 Superjet	1996 -	YB16CL-B
	700 Wave Raider	1996 -	YB16CL-B
	FXi 700	1995 -	YB16CL-B
	RA 700 BU Raider	1996 -	YB16CL-B
	Waveblaster 700	1993 1996	YB16CL-B
	Wave Venture 700	1995 1996	YB16CL-B
750	VXR 750	1995 -	YB16CL-B
760	Wave Blaster 760 II	1996 1999	YB16CL-B
	Wave Raider 760	1996 1999	YB16CL-B
1100	Wave Raider 1100	1996 -	YB16CL-B
	Wave Venture 1100	1996 -	YB16CL-B
1200	Wave Runner 1200 XL	1999 -	YB16CL-B

# Applications - Snowmobile

## ARCTIC CAT

CC	Model	Year		Battery
	All EFI Model 500 cc	1991	1993	YB14L-A2
	All EFI Model 500 cc	1994	2001	YB7-A
	All EFI Model 500 cc	1991	2001	Y50N-18L-A
	500cc/over	1993	-	YB14L-A2
	500cc/over	1994	2001	YB14-A2
	500cc/over	1991	2001	YB18-A

## BOMBARDIER / SKI-DOO

CC	Model	Year		Battery
	All Models	1999	-	Y50-N18L-A
	CK3 Types	2003	-	Y50-N18L-A
	ZX Types	1999	2001	YTX15L-BS
	ZX Types	2002	2003	YTX20L-BS

## KAWASAKI

CC	Model	Year		Battery
440	SS 440 -B LTD El. Starter	1981	1982	Y50-N18L-A
	ST 440 -A Intruder	1981	1982	Y50-N18L-A
	ST 440 -A Invader El. Starter	1980	-	Y50-N18L-A

## POLARIS

CC	Model	Year		Battery
500	Indy RXL/SKS	1995	1999	YB14A-A2
	Indy RXL/SKS	1990	1996	YB9A-A
	Indy Trail Deluxe	1990	1996	Y50-N18L-A
	Indy Trail Deluxe (El. Start)	1993	1999	Y50-N18L-A
	Indy Trail ES	1989	1996	Y50-N18L-A
	Sprint (El. Start)	1988	1996	Y60-N24-A
	Wide Track	1989	2004	Y50N-18L-A
	All other models	1992	2004	YB14A-A2
	All electric start kits	1985	1993	Y50N-18L-A
	All electric start kits	1994	2004	YB14A-A2

## YAMAHA

CC	Model	Year		Battery
80	SV 80 E Sno-Scoot	1988	1990	12N7-3B
125	SV 125 E Sno-Sport	1990	1991	YB14L-A2
300	CF 300	1983	1996	YB16AL-A2
340	CS 340 Ovation Deluxe/LE	1989	1997	YB14L-A2
	EC 340	1978	1984	YB14L-A2
340	ET 340 E Enticer	1979	-	Y50-N18L-A
	ET 340 E Enticer	1980	-	YB14L-A2
480	PZ 480	1984	1997	YB14L-A2
	VT 480 Venture GT	1992	1993	YB14L-A2
500	PZ 500 DX Phazer 500	2001	-	YB16AL-A2
	V-Max 500	1994	1999	YB16AL-A2
	VT 500 Venture XL	1999	2000	YB16AL-A2
540	EC 540	1976	1977	Y50-N18L-A
	VK5540E	1989	2003	YB16AL-A2
570	XL 540	1985	1996	YB16AL-A2
	EX 570 E Exciter	1988	1996	YB16AL-A2
600	V-Max 600 DX, ST	1994	1997	YB16AL-A2
	VT 600 Venture	1997	1998	YB16AL-A2
	VT 600 Venture	1999	2001	Y50-N18L-A
	VX 600 Ovation	1996	1997	YB16AL-A2
	VX600DX Vmax Delux	1999	2001	Y50-N18L-A
700	SXV700ER SX Viper ER	2002	2003	Y50-N18L-A
	VT 700 Venture	1998	2001	Y50-N18L-A
	VX 700 Ovation	1996	-	YB16AL-A2
	VX700DX	1999	2000	Y50-N18L-A
1000	VX700ER	2001	2002	Y50-N18L-A
	RX1000RX	2003	-	YTX20L-BS





 **SHIDO**®

  
**nitro**®  
A BATTERY FULL OF ENERGY

**-DISTRIBUTED BY-**

**DC-AFAM NV**

Venecoweg 20A - De Prijkels E17

B-9810 Nazareth Belgium

Tel: 0032-(0)9 243 73 90

Fax: 0032-(0)9 243 73 95

e-mail: [service@dc-afam.com](mailto:service@dc-afam.com)

[www.dc-afam.com](http://www.dc-afam.com)

Represented by:

